



CERTIFICATE OF ANALYSIS

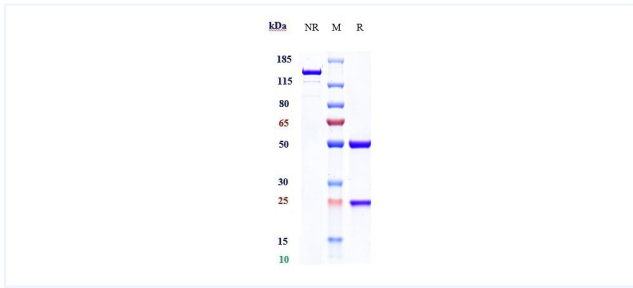


Product Details

Product name:	Anti-GDF15 / MIC1 Reference Antibody (CTL-002)	Lot.No.:	P298362
Target:	GDF15 / MIC1	Catalog:	CHB219
Target Accession:	Q99988	Concentration :	1 mg/mL
Clonality:	Monoclonal	Isotype:	IgG4SP-noK
Reactivity:	Human	Molecular Weight (kDa) :	144.56
Application:	ELISA, Bioactivity: FACS, Functional assay, Research in vivo	Endotoxin:	<1 EU/mg
Formulation:	Liquid: 100mM Pro-Ac, 20mM Arg pH 5.0 Lyophilization: 25mM histidine, 8% sucrose, 0.01% Tween80 pH6.2	Conjugation:	Unconjugated
Reconstitution:	For Powder, reconstitute with sterile, distilled water to a final concentration of 1 mg/ml. Gently shake to solubilize completely. Do not vortex.	Expression System:	CHO
Storage:	Upon receipt, store immediately at -20°C or lower for 24 months. Store aliquots at -80°C for up to 3 months. Avoid repeated freeze-thaw cycles.	Purification:	Protein A

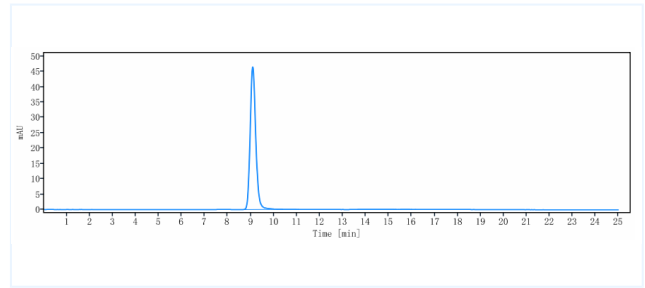
Data

Purity: SDS-PAGE



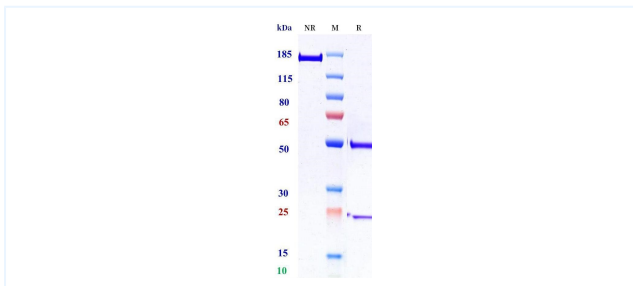
Anti-GDF15 / MIC1 Reference Antibody (CTL-002) on SDS-PAGE under reducing (R) condition. The purity of the protein is greater than 90%.

Purity: SEC-HPLC



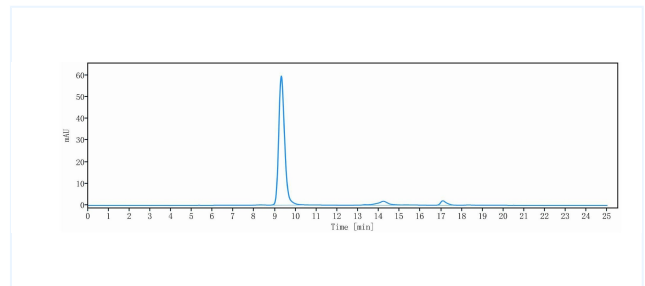
The purity of Anti-GDF15 / MIC1 Reference Antibody (CTL-002) is more than 95%, determined by SEC-HPLC.

Purity:SDS-PAGE



Anti-GDF15 / MIC1 Reference Antibody (CTL-002) on SDS-PAGE under reducing (R) condition. The purity of the protein is greater than 95%.

Purity:SEC-HPLC



The purity of Anti-GDF15 / MIC1 Reference Antibody (CTL-002) is 98.3%, determined by SEC-HPLC.

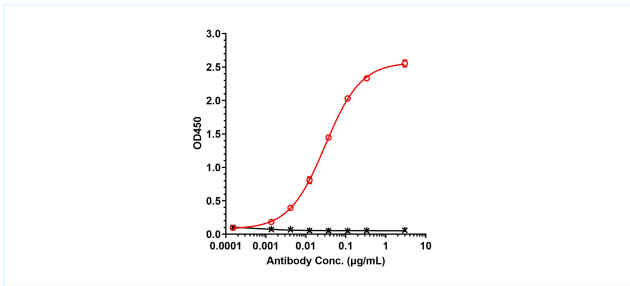
The products are for research use only. Not for use in diagnostic procedures.



CERTIFICATE OF ANALYSIS



Bioactivity: ELISA



Immobilized Biotinylated Human GDF15, His Tag, It's target at 2 µg/mL

can bind CTL-002, EC50= 0.03034 µg/mL.

The products are for research use only. Not for use in diagnostic procedures.