



CERTIFICATE OF ANALYSIS

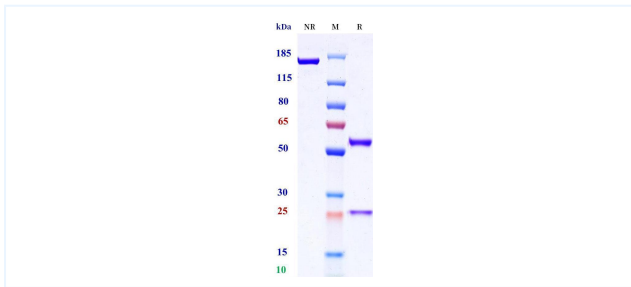


Product Details

Product name:	Anti-Kremen2 Reference Antibody (Abbvie Stemcentrx patent anti-Kremen2)	Lot.No.:	P294684
Target:	Kremen2	Catalog:	CHB949
Target Accession:	Q8NCW0	Concentration :	1 mg/mL
Clonality:	Monoclonal	Isotype:	IgG1-CS-N297A-noK-Opti
Reactivity:	Human	Molecular Weight (kDa) :	145.68
Application:	ELISA, Bioactivity: FACS, Functional assay, Research in vivo	Endotoxin:	<1 EU/mg
Formulation:	Liquid: 100mM Pro-Ac, 20mM Arg pH 5.0 Lyophilization: 25mM histidine, 8% sucrose, 0.01% Tween80 pH6.2	Conjugation:	Unconjugated
Reconstitution:	For Powder, reconstitute with sterile, distilled water to a final concentration of 1 mg/ml. Gently shake to solubilize completely. Do not vortex.	Expression System:	CHO
Storage:	Upon receipt, store immediately at -20°C or lower for 24 months. Store aliquots at -80°C for up to 3 months. Avoid repeated freeze-thaw cycles.	Purification:	Protein A

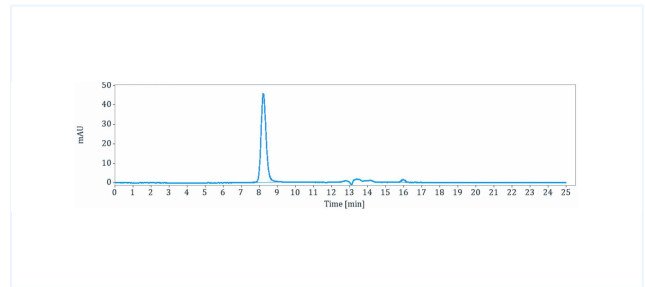
Data

Purity:SDS-PAGE



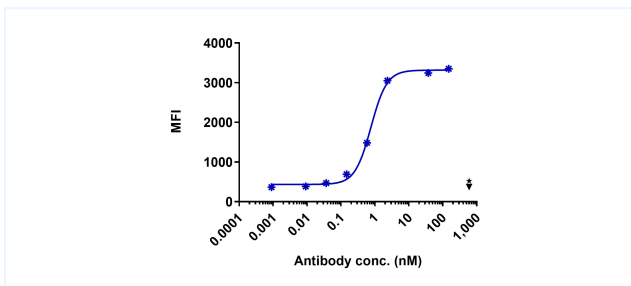
Anti-Kremen2 Reference Antibody (Abbvie Stemcentrx patent anti-Kremen2) on SDS-PAGE under reducing (R) condition. The purity of the protein is greater than 95%.

Purity:SEC-HPLC



The purity of Anti-Kremen2 Reference Antibody (Abbvie Stemcentrx patent anti-Kremen2) is 97.45%, determined by SEC-HPLC.

Bioactivity: FACS



PLVX-puro-Kremen2-FL cell line were stained with Abbvie Stemcentrx patent anti-Kremen2 and negative control protein respectively, washed and then followed by PE and analyzed with FACS, with the EC50 is 0.768 nM.

The products are for research use only. Not for use in diagnostic procedures.