



# CERTIFICATE OF ANALYSIS

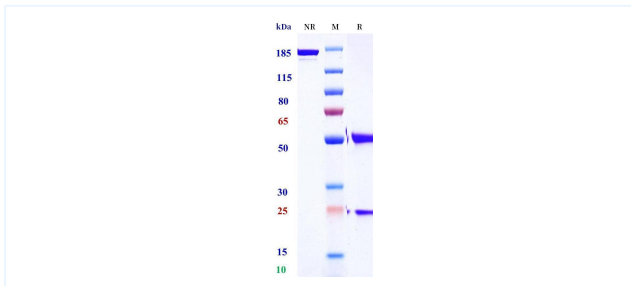


## Product Details

Product name:	Anti-STEAP2 Reference Antibody (Medimmune patent anti-STEAP2 CAR)	Lot.No.:	P296472
Target:	STEAP2	Catalog:	CHB913
Target Accession:	Q8NFT2	Concentration :	1 mg/mL
Clonality:	Monoclonal	Isotype:	IgG1
Reactivity:	Human	Molecular Weight (kDa) :	147.14
Application:	ELISA, Bioactivity: FACS, Functional assay, Research in vivo	Endotoxin:	<1 EU/mg
Formulation:	Liquid: 100mM Pro-Ac, 20mM Arg pH 5.0 Lyophilization: 25mM histidine, 8% sucrose, 0.01% Tween80 pH6.2	Conjugation:	Unconjugated
Reconstitution:	For Powder, reconstitute with sterile, distilled water to a final concentration of 1 mg/ml. Gently shake to solubilize completely. Do not vortex.	Expression System:	CHO
Storage:	Upon receipt, store immediately at -20°C or lower for 24 months. Store aliquots at -80°C for up to 3 months. Avoid repeated freeze-thaw cycles.	Purification:	Protein A

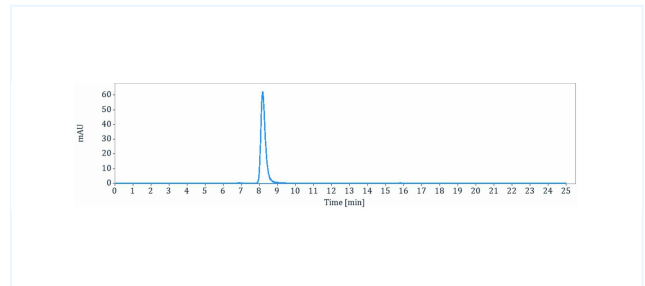
# Data

## Purity:SDS-PAGE



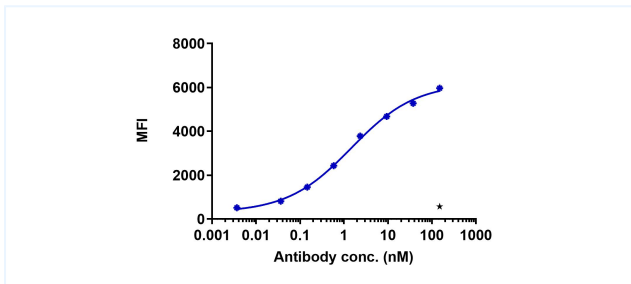
Anti-STEAP2 Reference Antibody (Medimmune patent anti-STEAP2 CAR) on SDS-PAGE under reducing (R) condition. The purity of the protein is greater than 95%.

## Purity:SEC-HPLC



The purity of Anti-STEAP2 Reference Antibody (Medimmune patent anti-STEAP2 CAR) is 100%, determined by SEC-HPLC.

## Bioactivity: FACS



PLVX-puro-STEAP2-FL cell line were stained with Medimmune patent anti-STEAP2 CAR and negative control protein respectively, washed and then followed by PE and analyzed with FACS, with the EC50 is 1.471 nM.

The products are for research use only. Not for use in diagnostic procedures.