



CERTIFICATE OF ANALYSIS

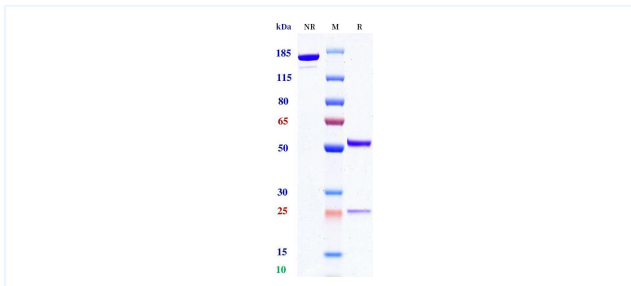


Product Details

Product name:	Anti-Beta Klotho Reference Antibody (Novartis patent anti-Beta Klotho)	Lot.No.:	P293180
Target:	Beta Klotho	Catalog:	CHB861
Target Accession:	Q9UEF7	Concentration :	1 mg/mL
Clonality:	Monoclonal	Isotype:	IgG1-LALA-REM
Reactivity:	Human	Molecular Weight (kDa) :	145.72
Application:	ELISA, Bioactivity: FACS, Functional assay, Research in vivo	Endotoxin:	<1 EU/mg
Formulation:	Liquid: 100mM Pro-Ac, 20mM Arg pH 5.0 Lyophilization: 25mM histidine, 8% sucrose, 0.01% Tween80 pH6.2	Conjugation:	Unconjugated
Reconstitution:	For Powder, reconstitute with sterile, distilled water to a final concentration of 1 mg/ml. Gently shake to solubilize completely. Do not vortex.	Expression System:	CHO
Storage:	Upon receipt, store immediately at -20°C or lower for 24 months. Store aliquots at -80°C for up to 3 months. Avoid repeated freeze-thaw cycles.	Purification:	Protein A

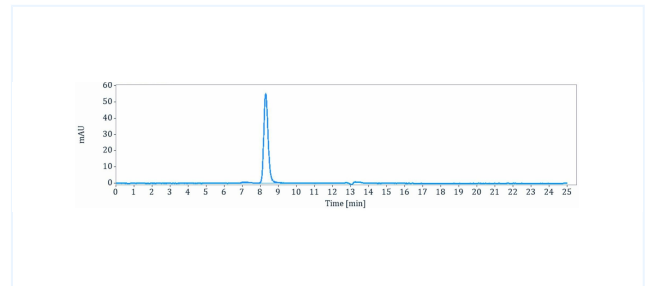
Data

Purity:SDS-PAGE



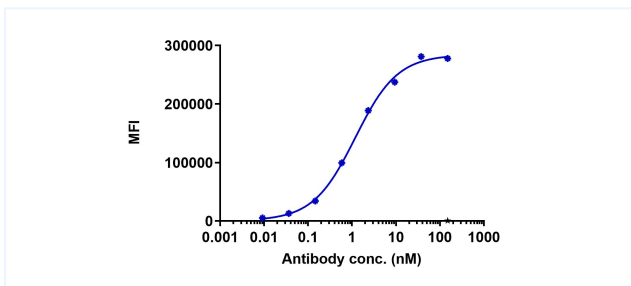
Anti-Beta Klotho Reference Antibody (Novartis patent anti-Beta Klotho) on SDS-PAGE under reducing (R) condition. The purity of the protein is greater than 95%.

Purity:SEC-HPLC



The purity of Anti-Beta Klotho Reference Antibody (Novartis patent anti-Beta Klotho) is 97.65%, determined by SEC-HPLC.

Bioactivity: FACS



HuKLB-HEK293-A6 cell line were stained with Novartis patent anti-Beta Klotho and negative control protein respectively, washed and then followed by PE and analyzed with FACS, with the EC50 is 1.187 nM.

The products are for research use only. Not for use in diagnostic procedures.