



CERTIFICATE OF ANALYSIS

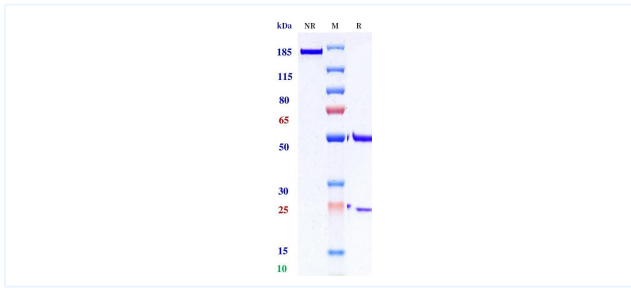


Product Details

Product name:	Anti-KLK7 Reference Antibody (Genentech patent anti-KLK7)	Lot.No.:	P293178
Target:	KLK7	Catalog:	CHB860
Target Accession:	P49862	Concentration :	1 mg/mL
Clonality:	Monoclonal	Isotype:	IgG1
Reactivity:	Human / Monkey	Molecular Weight (kDa) :	146
Application:	ELISA, Bioactivity: FACS, Functional assay, Research in vivo	Endotoxin:	<1 EU/mg
Formulation:	Liquid: 100mM Pro-Ac, 20mM Arg pH 5.0 Lyophilization: 25mM histidine, 8% sucrose, 0.01% Tween80 pH6.2	Conjugation:	Unconjugated
Reconstitution:	For Powder, reconstitute with sterile, distilled water to a final concentration of 1 mg/ml. Gently shake to solubilize completely. Do not vortex.	Expression System:	CHO
Storage:	Upon receipt, store immediately at -20°C or lower for 24 months. Store aliquots at -80°C for up to 3 months. Avoid repeated freeze-thaw cycles.	Purification:	Protein A

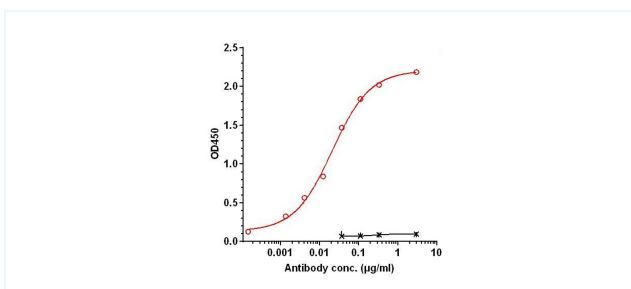
Data

Purity:SDS-PAGE



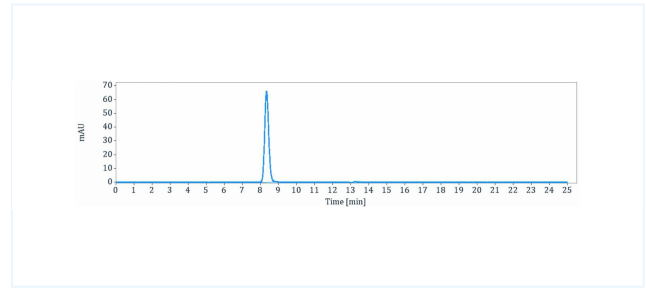
Anti-KLK7 Reference Antibody (Genentech patent anti-KLK7) on SDS-PAGE under reducing (R) condition. The purity of the protein is greater than 95%.

Bioactivity: ELISA



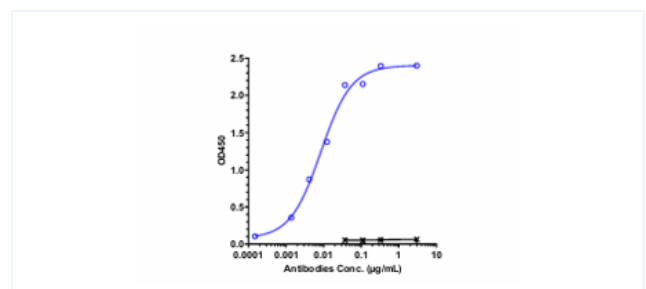
Immobilized Hu KLK7-his at 2 µg/mL can bind Genentech patent anti-KLK7, EC50= 0.0212 µg/mL.

Purity:SEC-HPLC



The purity of Anti-KLK7 Reference Antibody (Genentech patent anti-KLK7) is 99.71%, determined by SEC-HPLC.

ELISA



Immobilized Cynomolgus KLK7 Protein, Fc tag can bind Genentech patent anti-KLK7. The EC is 0.008428 µg/mL.

The products are for research use only. Not for use in diagnostic procedures.



CERTIFICATE OF ANALYSIS



ELISA

The products are for research use only. Not for use in diagnostic procedures.

Tel: +86 021 3368 1627

Email: service@sanyoubio.com

Web: www.crs.sanyoubio.com