



CERTIFICATE OF ANALYSIS

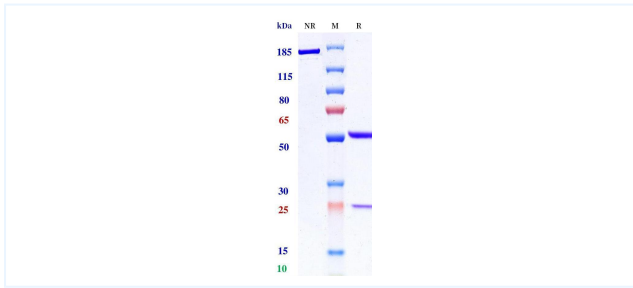


Product Details

| | | | |
|----------------------|---|-----------------------------|--------------|
| Product name: | Anti-CCR6 Reference Antibody (MSM patent anti-CCR6) | Lot.No.: | P291299 |
| Target: | CCR6 | Catalog: | CHB851 |
| Target Accession: | P51684 | Concentration : | 1 mg/mL |
| Clonality: | Monoclonal | Isotype: | IgG1-REM |
| Reactivity: | Human | Molecular Weight (kDa) : | 145.58 |
| Application: | ELISA, Bioactivity: FACS, Functional assay, Research in vivo | Endotoxin: | <1 EU/mg |
| Formulation: | Liquid: 100mM Pro-Ac, 20mM Arg pH 5.0 Lyophilization: 25mM histidine, 8% sucrose, 0.01% Tween80 pH6.2 | Conjugation: | Unconjugated |
| Reconstitution: | For Powder, reconstitute with sterile, distilled water to a final concentration of 1 mg/ml. Gently shake to solubilize completely. Do not vortex. | Expression System: | CHO |
| Storage: | Upon receipt, store immediately at -20°C or lower for 24 months. Store aliquots at -80°C for up to 3 months. Avoid repeated freeze-thaw cycles. | Purification: | Protein A |

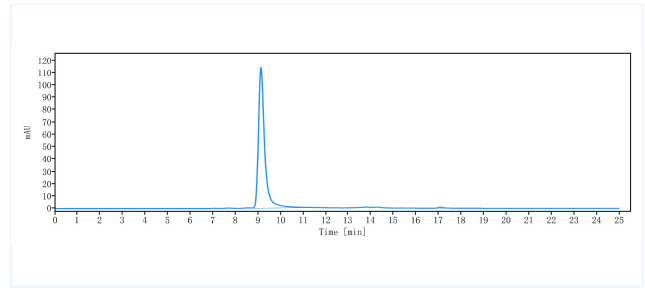
Data

Purity:SDS-PAGE



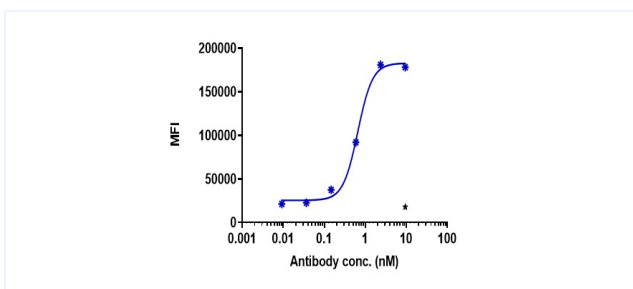
Anti-CCR6 Reference Antibody (MSM patent anti-CCR6) on SDS-PAGE under reducing (R) condition. The purity of the protein is greater than 95%.

Purity:SEC-HPLC



The purity of Anti-CCR6 Reference Antibody (MSM patent anti-CCR6) is 98.74%, determined by SEC-HPLC.

Bioactivity: FACS



HuCCR6-FL-His-EGFP-HEK293-A4 cell line were stained with MSM patent anti-CCR6 and negative control protein respectively, washed and then followed by PE and analyzed with FACS, with the EC50 is 0.654 nM.

The products are for research use only. Not for use in diagnostic procedures.