



# CERTIFICATE OF ANALYSIS

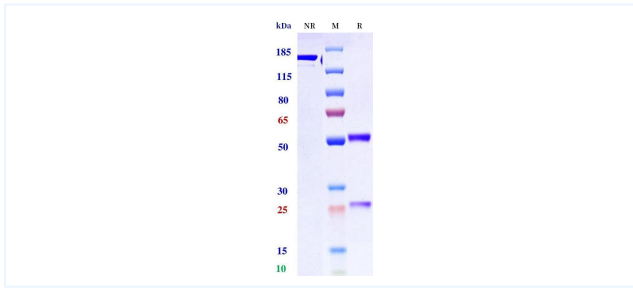


## Product Details

Product name:	Anti-CCR6 Reference Antibody (Glenmark patent anti-CCR6)	Lot.No.:	P291286
Target:	CCR6	Catalog:	CHB841
Target Accession:	P51684	Concentration :	1 mg/mL
Clonality:	Monoclonal	Isotype:	IgG1
Reactivity:	Human	Molecular Weight (kDa) :	146.06
Application:	ELISA, Bioactivity: FACS, Functional assay, Research in vivo	Endotoxin:	<1 EU/mg
Formulation:	Liquid: 100mM Pro-Ac, 20mM Arg pH 5.0 Lyophilization: 25mM histidine, 8% sucrose, 0.01% Tween80 pH6.2	Conjugation:	Unconjugated
Reconstitution:	For Powder, reconstitute with sterile, distilled water to a final concentration of 1 mg/ml. Gently shake to solubilize completely. Do not vortex.	Expression System:	CHO
Storage:	Upon receipt, store immediately at -20°C or lower for 24 months. Store aliquots at -80°C for up to 3 months. Avoid repeated freeze-thaw cycles.	Purification:	Protein A

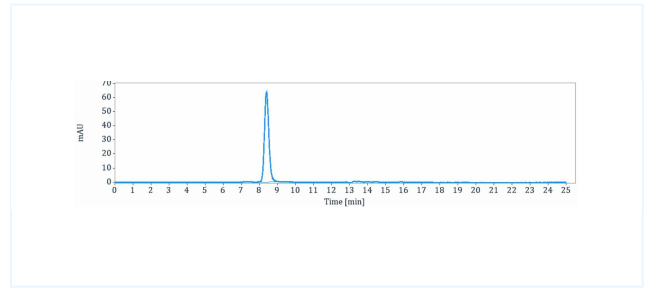
## Data

### Purity:SDS-PAGE



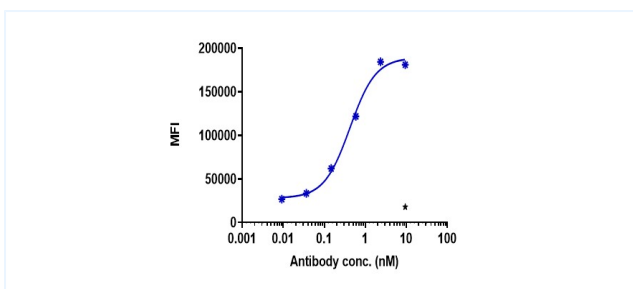
Anti-CCR6 Reference Antibody (Glenmark patent anti-CCR6) on SDS-PAGE under reducing (R) condition. The purity of the protein is greater than 95%.

### Purity:SEC-HPLC



The purity of Anti-CCR6 Reference Antibody (Glenmark patent anti-CCR6) is 100%, determined by SEC-HPLC.

### Bioactivity: FACS



HuCCR6-FL-His-EGFP-HEK293-A4 cell line were stained with Glenmark patent anti-CCR6 and negative control protein respectively, washed and then followed by PE and analyzed with FACS, with the EC50 is 0.428 nM.

The products are for research use only. Not for use in diagnostic procedures.