



CERTIFICATE OF ANALYSIS

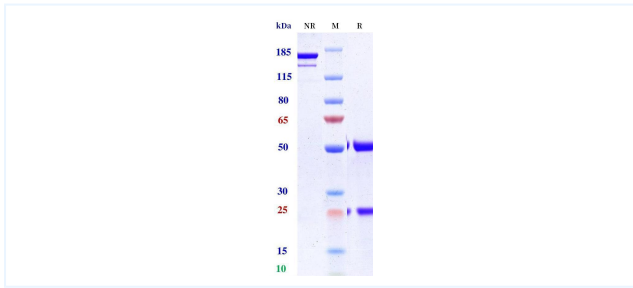


Product Details

| | | | |
|----------------------|---|-----------------------------|--------------|
| Product name: | Anti-CTLA-4 / CD152 Reference Antibody (botensilimab) | Lot.No.: | P248461C |
| Target: | CTLA-4 / CD152 | Catalog: | CHB632 |
| Target Accession: | P16410 | Concentration : | 1 mg/mL |
| Clonality: | Monoclonal | Isotype: | IgG1-REM |
| Reactivity: | Human | Molecular Weight (kDa) : | 144.54 |
| Application: | ELISA, Bioactivity: FACS, Functional assay, Research in vivo | Endotoxin: | <1 EU/mg |
| Formulation: | Liquid: 100mM Pro-Ac, 20mM Arg pH 5.0 Lyophilization: 25mM histidine, 8% sucrose, 0.01% Tween80 pH6.2 | Conjugation: | Unconjugated |
| Reconstitution: | For Powder, reconstitute with sterile, distilled water to a final concentration of 1 mg/ml. Gently shake to solubilize completely. Do not vortex. | Expression System: | CHO |
| Storage: | Upon receipt, store immediately at -20°C or lower for 24 months. Store aliquots at -80°C for up to 3 months. Avoid repeated freeze-thaw cycles. | Purification: | Protein A |

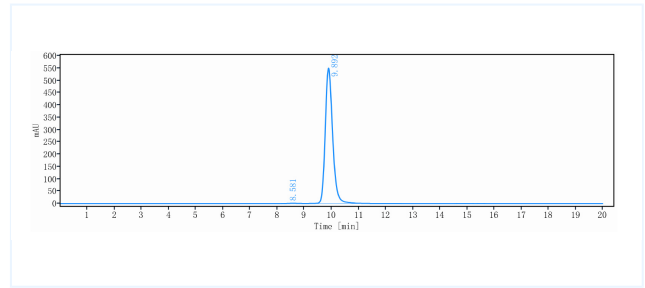
Data

Purity:SDS-PAGE



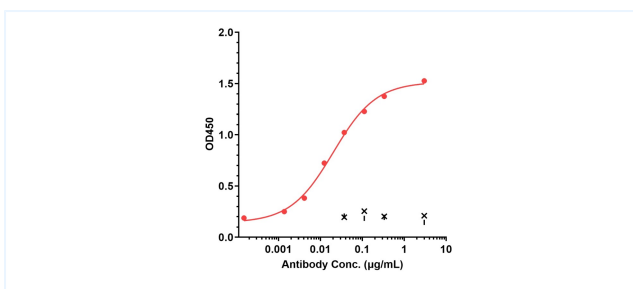
Anti-CTLA-4 / CD152 Reference Antibody (botensilimab) on SDS-PAGE under reducing (R) condition. The purity of the protein is greater than 95%.

Purity:SEC-HPLC



The purity of Anti-CTLA-4 / CD152 Reference Antibody (botensilimab) is 99.5%, determined by SEC-HPLC.

Bioactivity: ELISA



Immobilized Human CTLA-4-Fc-Biotin at 2 µg/mL can bind botensilimab, EC50= 0.02025 µg/mL.

The products are for research use only. Not for use in diagnostic procedures.