



# CERTIFICATE OF ANALYSIS

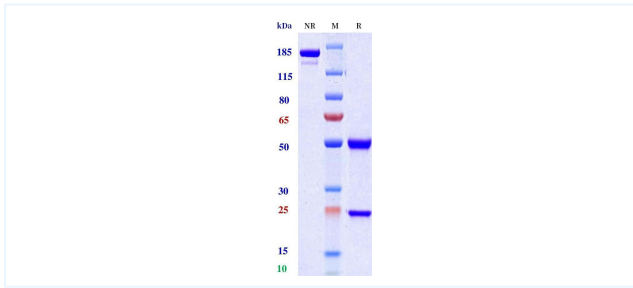


## Product Details

|                      |   |                             |              |
|----------------------|---|-----------------------------|--------------|
| Product name:        | Anti-LIGHT Reference Antibody (Quisovalimab)  | Lot.No.:                    | P244929      |
| Target:              | LIGHT   | Catalog:                    | CHB574       |
| Target<br>Accession: | N/A   | Concentration :             | 1 mg/mL      |
| Clonality:           | Monoclonal  | Isotype:                    | IgG4SP       |
| Reactivity:          | Human   | Molecular Weight<br>(kDa) : | 144.32       |
| Application:         | ELISA, Bioactivity: FACS, Functional assay, Research in vivo  | Endotoxin:                  | <1 EU/mg     |
| Formulation:         | Liquid: 100mM Pro-Ac, 20mM Arg pH 5.0<br>Lyophilization: 25mM histidine, 8% sucrose, 0.01% Tween80<br>pH6.2   | Conjugation:                | Unconjugated |
| Reconstitution:      | For Powder, reconstitute with sterile, distilled water to a<br>final concentration of 1 mg/ml. Gently shake to solubilize<br>completely. Do not vortex. | Expression System:          | CHO          |
| Storage:             | Upon receipt, store immediately at -20°C or lower for 24<br>months. Store aliquots at -80°C for up to 3 months. Avoid<br>repeated freeze-thaw cycles.   | Purification:               | Protein A    |

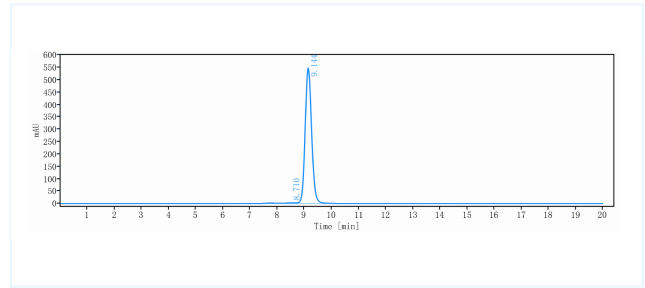
## Data

## Purity:SDS-PAGE



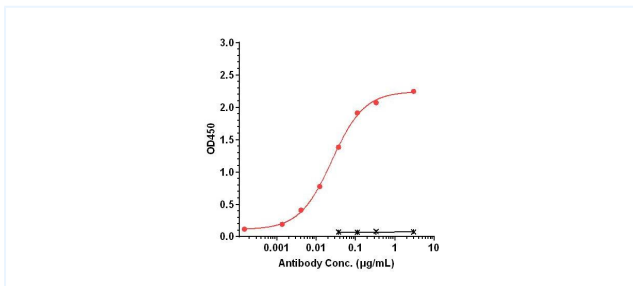
Anti-LIGHT Reference Antibody (Quisovalimab) on SDS-PAGE under reducing (R) condition. The purity of the protein is greater than 95%.

## Purity:SEC-HPLC



The purity of Anti-LIGHT Reference Antibody (Quisovalimab) is 97.8%, determined by SEC-HPLC.

## Bioactivity: ELISA



Immobilized N-6His-TEV-LIGHT-ECD (83-240 aa) at 2 µg/mL can bind Quisovalimab, EC50= 0.02518 µg/mL.

The products are for research use only. Not for use in diagnostic procedures.