



# CERTIFICATE OF ANALYSIS

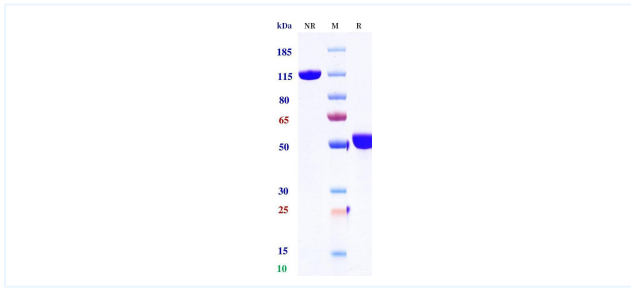


## Product Details

|                      |   |                             |                 |
|----------------------|---|-----------------------------|-----------------|
| Product name:        | Anti-CTLA-4 / CD152 Reference Antibody (Tuvonralimab)   | Lot.No.:                    | P233180         |
| Target:              | CTLA-4 / CD152  | Catalog:                    | CHB554          |
| Target<br>Accession: | P16410  | Concentration :             | 1 mg/mL         |
| Clonality:           | Monoclonal  | Isotype:                    | IgG1-EM-DCCGKRE |
| Reactivity:          | Human   | Molecular Weight<br>(kDa) : | 145             |
| Application:         | ELISA, Bioactivity: FACS, Functional assay, Research in vivo  | Endotoxin:                  | <1 EU/mg        |
| Formulation:         | Liquid: 100mM Pro-Ac, 20mM Arg pH 5.0 <br/><br>Lyophilization: 25mM histidine, 8% sucrose, 0.01%<br>Tween80 pH6.2                                       | Conjugation:                | Unconjugated    |
| Reconstitution:      | For Powder, reconstitute with sterile, distilled water to a<br>final concentration of 1 mg/ml. Gently shake to solubilize<br>completely. Do not vortex. | Expression System:          | CHO             |
| Storage:             | Upon receipt, store immediately at -20°C or lower for 24<br>months. Store aliquots at -80°C for up to 3 months. Avoid<br>repeated freeze-thaw cycles.   | Purification:               | Protein A       |

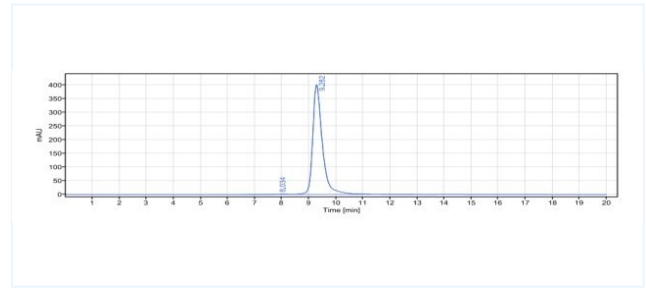
## Data

## Purity:SDS-PAGE



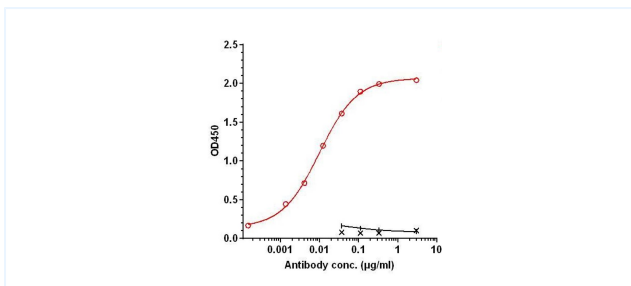
Anti-CTLA-4 / CD152 Reference Antibody (Tuvonralimab) on SDS-PAGE under reducing (R) condition. The purity of the protein is greater than 95%.

## Purity:SEC-HPLC



The purity of Anti-CTLA-4 / CD152 Reference Antibody (Tuvonralimab) is 99.14%, determined by SEC-HPLC.

## Bioactivity: ELISA



Immobilized human CTLA4 Protein-His at 2 µg/mL can bind

Tuvonralimab, EC<sub>50</sub>= 0.0100 µg/mL.

The products are for research use only. Not for use in diagnostic procedures.