



# CERTIFICATE OF ANALYSIS



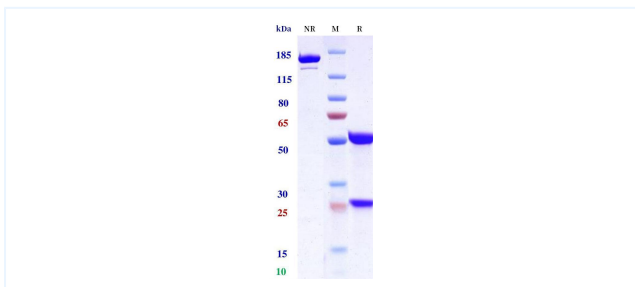
## Product Details

Product name:	Anti-CD272 / BTLA Reference Antibody (Tifcemalimab)	Lot.No.:	P262951C
Target:	CD272 / BTLA	Catalog:	CHB332
Target Accession:	Q7Z6A9	Concentration :	1 mg/mL
Clonality:	Monoclonal	Isotype:	IgG4SP
Reactivity:	Human	Molecular Weight (kDa) :	146
Application:	ELISA, Bioactivity: FACS, Functional assay, Research in vivo	Endotoxin:	<0.001 EU/μg
Formulation:	Liquid: 100mM Pro-Ac, 20mM Arg pH 5.0 Lyophilization: 25mM histidine, 8% sucrose, 0.01% Tween80 pH6.2	Conjugation:	Unconjugated
Reconstitution:	For Powder, reconstitute with sterile, distilled water to a final concentration of 1 mg/ml. Gently shake to solubilize completely. Do not vortex.	Expression System:	CHO
Storage:	Upon receipt, store immediately at -20°C or lower for 24 months. Store aliquots at -80°C for up to 3 months. Avoid repeated freeze-thaw cycles.	Purification:	Protein A

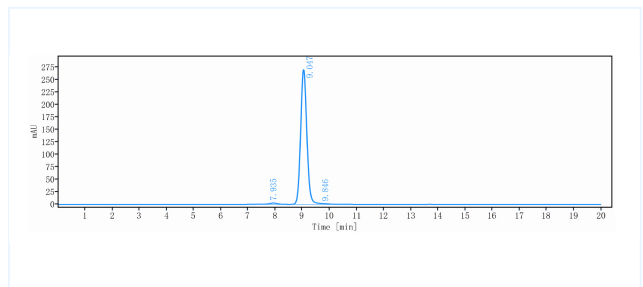
## Data

Purity:SDS-PAGE

Purity:SEC-HPLC

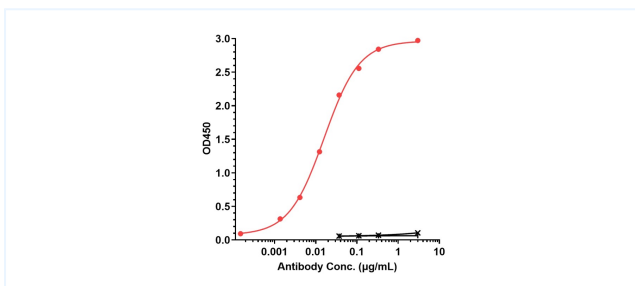


Anti-CD272 / BTLA Reference Antibody (Tifcemalimab) on SDS-PAGE under reducing (R) condition. The purity of the protein is greater than 95%.



The purity of Anti-CD272 / BTLA Reference Antibody (Tifcemalimab) is 95.6%, determined by SEC-HPLC.

### Bioactivity: ELISA



Immobilized hu-BTLAECDCD-chis at 2 µg/mL can bind Tifcemalimab, EC50= 0.01601 µg/mL.

The products are for research use only. Not for use in diagnostic procedures.