



# CERTIFICATE OF ANALYSIS

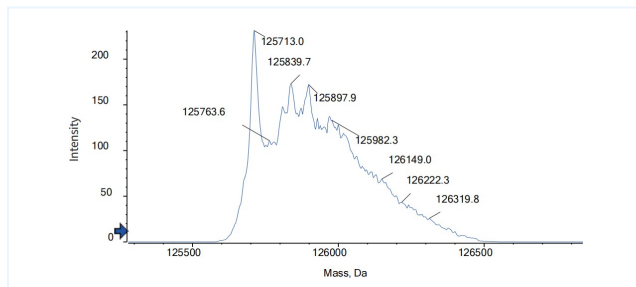


## Product Details

Product name:	Anti-CD3 & EpCAM Reference Antibody (M701)	Lot.No.:	P284457C
Target:	EpCAM / TROP1 / CD326, CD3	Catalog:	CHBA073
Target Accession:	P07766 & P16422	Concentration :	1 mg/mL
Clonality:	Bispecific	Isotype:	Half IgG+ScFv
Reactivity:	Human	Molecular Weight (kDa) :	125.93 kDa
Application:	Kinetics (SPR), ELISA, Bioactivity: FACS, Functional assay, Research in vivo	Endotoxin:	<1 EU/mg
Formulation:	Liquid: 100mM Pro-Ac, 20mM Arg pH 5.0 Lyophilization: 25mM histidine, 8% sucrose, 0.01% Tween80 pH6.2	Conjugation:	Unconjugated
Reconstitution:	For Powder, reconstitute with sterile, distilled water to a final concentration of 1 mg/ml. Gently shake to solubilize completely. Do not vortex.	Expression System:	CHO
Storage:	Upon receipt, store immediately at -20°C or lower for 24 months. Store aliquots at -80°C for up to 3 months. Avoid repeated freeze-thaw cycles.	Purification:	Protein A

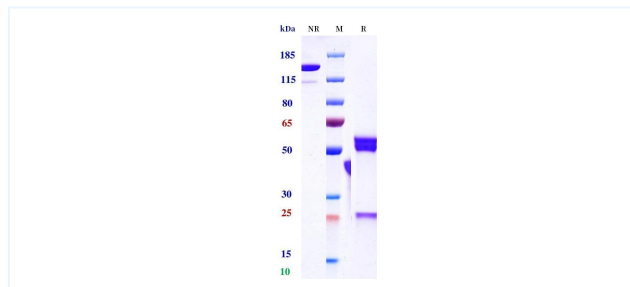
## Data

## MASS



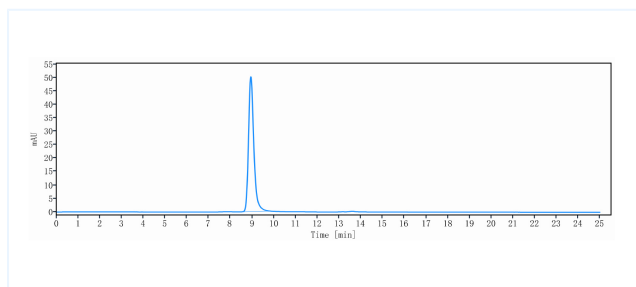
The detected molecular weight of Anti-CD3 & EpCAM Reference Antibody (M701) is 125.71 kDa.

## Purity: SDS-PAGE



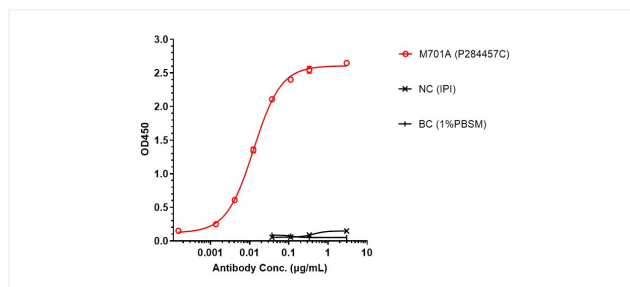
Anti-CD3 & EpCAM Reference Antibody (M701) on SDS-PAGE under reducing (R) condition. The purity of the protein is greater than 95%.

## Purity: SEC-HPLC



The purity of Anti-CD3 & EpCAM Reference Antibody (M701) is 95.5%, determined by SEC-HPLC.

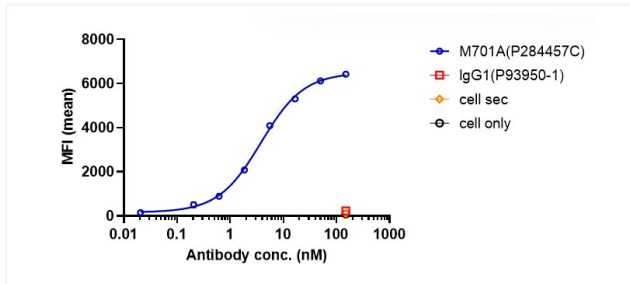
## ELISA



M701A bound to EpCAM protein, and then rebounded to secondary antibodies(Anti-human-IgG-Fc-HRP), and read OD450. As shown in fig, M701A bound to in hu-EpCAM-His, and the EC50 was 0.013 nM.

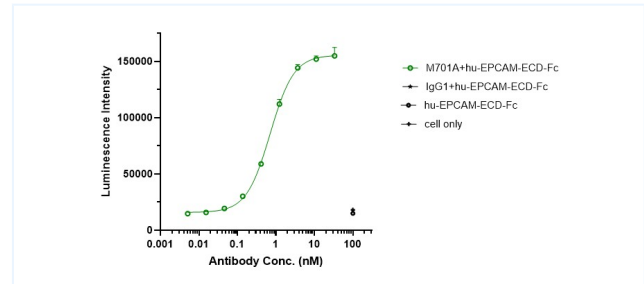
The products are for research use only. Not for use in diagnostic procedures.

## ELISA



M701A bound to huCD3e-jurkat cells, and then rebounded to fluorescent secondary antibodies(Anti-human IgG, Fcy PE) , and test by flow cytometry. As shown in fig, M701A bound to huCD3e-jurkat cells, and the EC50 was 3.809 nM.

## Function: Luciferase



Co-incubation of M701A with Jurkat cells, then with the addition of GSV0-hu-EPCAM-ECD-Fc cells for 6 hours. Bright-Lite was used to detect the fluorescent signal. As shown in fig, M701A was able to activate the NF-AT signaling pathway, and the EC50 was 0.707 nM.

The products are for research use only. Not for use in diagnostic procedures.