



# CERTIFICATE OF ANALYSIS

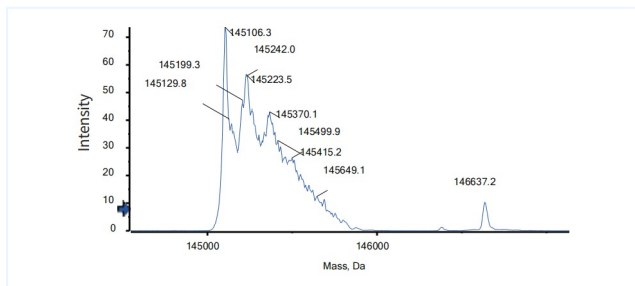


## Product Details

|                      |   |                             |              |
|----------------------|---|-----------------------------|--------------|
| Product name:        | Anti-PD-1 & TIM-3 Reference Antibody (Lomvastomig)  | Lot.No.:                    | P262503C     |
| Target:              | PDCD1 / PD-1 / CD279, TIM-3 / HAVCR2 / CD366  | Catalog:                    | CHBA071      |
| Target<br>Accession: | Q15116 & Q8TDQ0   | Concentration :             | 1 mg/mL      |
| Clonality:           | Bispecific  | Isotype:                    | IgG-like     |
| Reactivity:          | Human   | Molecular Weight<br>(kDa) : | 145.34 kDa   |
| Application:         | Kinetics (SPR), ELISA, Bioactivity: FACS, Functional assay,<br>Research in vivo   | Endotoxin:                  | <1 EU/mg     |
| Formulation:         | Liquid: 100mM Pro-Ac, 20mM Arg pH 5.0 <br/><br>Lyophilization: 25mM histidine, 8% sucrose, 0.01% Tween80<br>pH6.2                                       | Conjugation:                | Unconjugated |
| Reconstitution:      | For Powder, reconstitute with sterile, distilled water to a<br>final concentration of 1 mg/ml. Gently shake to solubilize<br>completely. Do not vortex. | Expression System:          | CHO          |
| Storage:             | Upon receipt, store immediately at -20°C or lower for 24<br>months. Store aliquots at -80°C for up to 3 months. Avoid<br>repeated freeze-thaw cycles.   | Purification:               | Protein A    |

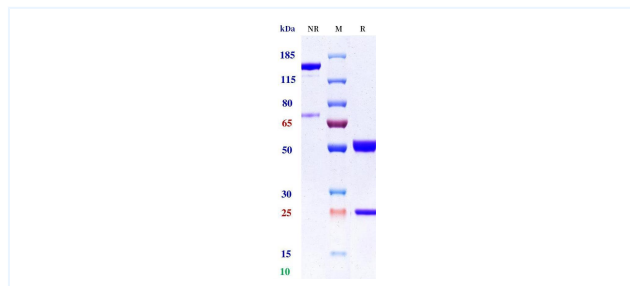
# Data

## MASS



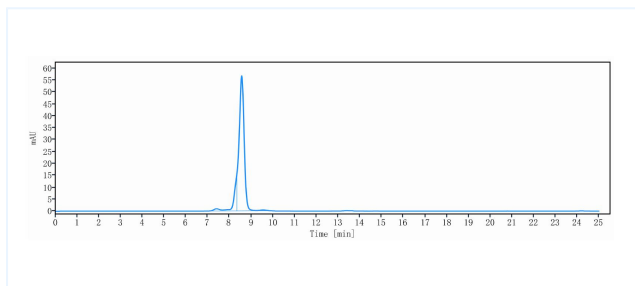
The detected molecular weight of Anti-PD-1 & TIM-3 Reference Antibody (Lomvastomig) is 145.11 kDa.

## Purity: SDS-PAGE



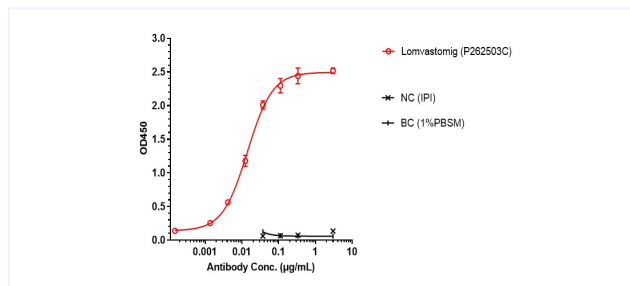
Anti-PD-1 & TIM-3 Reference Antibody (Lomvastomig) on SDS-PAGE under reducing (R) condition. The purity of the protein is greater than 95%.

## Purity: SEC-HPLC



The purity of Anti-PD-1 & TIM-3 Reference Antibody (Lomvastomig) is 90.00%, determined by SEC-HPLC.

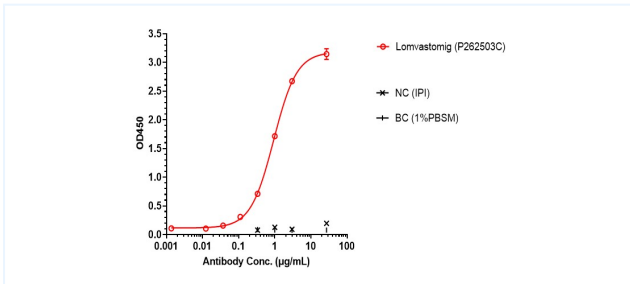
## ELISA



Lomvastomig bound to PD-1 protein, and then rebounded to secondary antibodies(Anti-human-IgG-Fc-HRP), and read OD450. As shown in fig, Lomvastomig bound to hu-PD-1-His, and the EC50 was 0.014 nM.

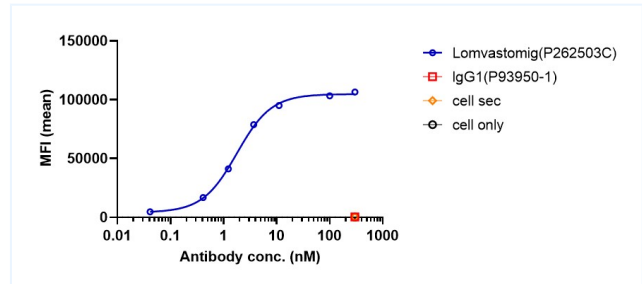
The products are for research use only. Not for use in diagnostic procedures.

## ELISA



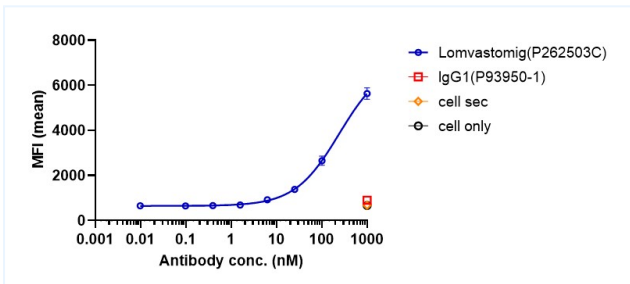
Lomvastomig bound to TIM-3 protein, and then rebounded to secondary antibodies(Anti-human-IgG-Fc-HRP), and read OD450. As shown in fig, Lomvastomig bound to hu-TIM-3-His, and the EC50 was 0.933 nM.

## Bioactivity: FACS



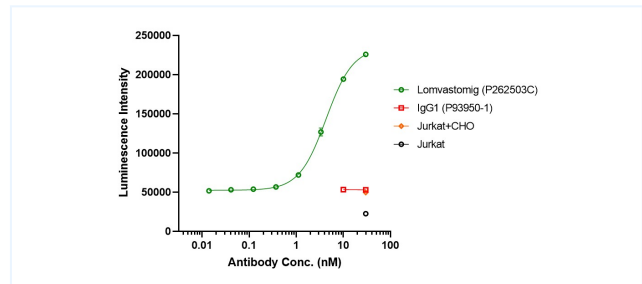
Lomvastomig bound to huPD-1-Jurkat cells, and then rebounded to fluorescent secondary antibodies(Anti-human IgG, Fcy PE), and test by flow cytometry. As shown in fig, Lomvastomig bound to huPD-1-Jurkat cells, and the EC50 was 1.788 nM.

## Bioactivity: FACS



Lomvastomig bound to huTIM3-FL-HEK293 cells, and then rebounded to fluorescent secondary antibodies(Anti-human IgG, Fcy PE), and test by flow cytometry. As shown in fig, Lomvastomig bound to huTIM3-FL-HEK293 cells, and the EC50 was 239.100 nM.

## Function: Luciferase



Co-incubation of Lomvastomig with PD-1-NF-AT-Jurkat and CD3L-huPD-L1-CHO-K cells and incubated for 6 hours. Bright-Lite was used to detect the fluorescent signal. As shown in fig, Lomvastomig was able to block the PD-1/PD-L1 signaling pathway, and the EC50 was 4.300 nM.

The products are for research use only. Not for use in diagnostic procedures.