



CERTIFICATE OF ANALYSIS

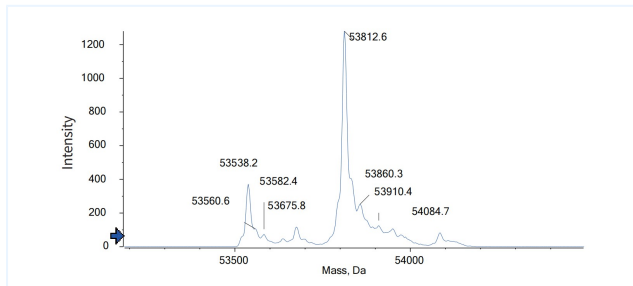


Product Details

Product name:	Anti-CD19 & CD3 Reference Antibody (Blinatumomab)	Lot.No.:	P243592C
Target:	CD19, CD3	Catalog:	CHBA068
Target Accession:	P15391 & P07766	Concentration :	1 mg/mL
Clonality:	Bispecific	Isotype:	BiTE
Reactivity:	Human	Molecular Weight (kDa) :	54.05 kDa
Application:	Kinetics (SPR), ELISA, Bioactivity: FACS, Functional assay, Research in vivo	Endotoxin:	<1 EU/mg
Formulation:	Liquid: 100mM Pro-Ac, 20mM Arg pH 5.0 Lyophilization: 25mM histidine, 8% sucrose, 0.01% Tween80 pH6.2	Conjugation:	Unconjugated
Reconstitution:	For Powder, reconstitute with sterile, distilled water to a final concentration of 1 mg/ml. Gently shake to solubilize completely. Do not vortex.	Expression System:	CHO
Storage:	Upon receipt, store immediately at -20°C or lower for 24 months. Store aliquots at -80°C for up to 3 months. Avoid repeated freeze-thaw cycles.	Purification:	Protein A

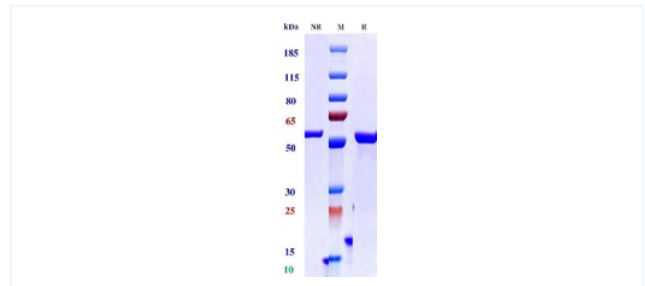
Data

MASS



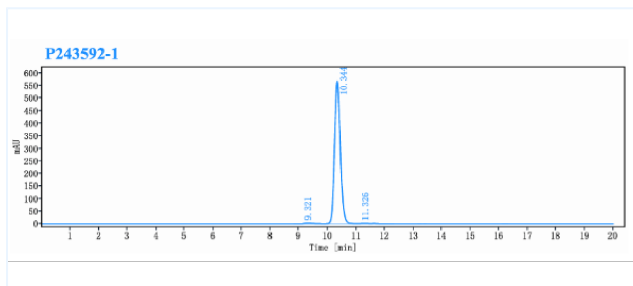
The detected molecular weight of Anti-CD19 & CD3 Reference Antibody (Blinatumomab) is 53.81 kDa.

Purity: SDS-PAGE



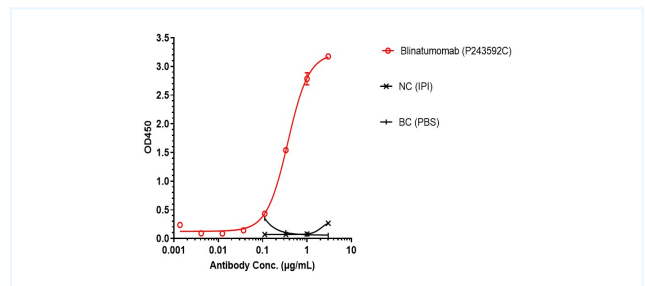
Anti-CD19 & CD3 Reference Antibody (Blinatumomab) on SDS-PAGE under reducing (R) condition. The purity of the protein is greater than 95%.

Purity: SEC-HPLC



The purity of Anti-CD19 & CD3 Reference Antibody (Blinatumomab) is 98.26%, determined by SEC-HPLC.

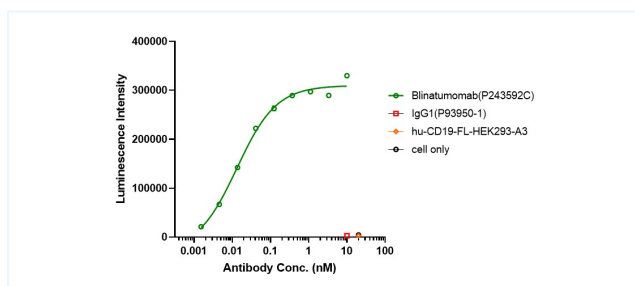
ELISA



Blinatumomab bound to CD19 protein, and then rebounded to secondary antibodies (Anti-6*his-HRP), and read OD450. As shown in fig, Blinatumomab bound to in human CD19-His, and the EC50 was 0.370 nM.

The products are for research use only. Not for use in diagnostic procedures.

Bioactivity: FACS



Co-incubation of Blinatumomab with Jurkat cells, then with the addition of hu-CD19-HEK293 cells for 6 hours. Bright-Lite was used to detect the fluorescent signal.

As shown in fig, Blinatumomab was able to activate the NF-AT signaling pathway.

The products are for research use only. Not for use in diagnostic procedures.