



CERTIFICATE OF ANALYSIS

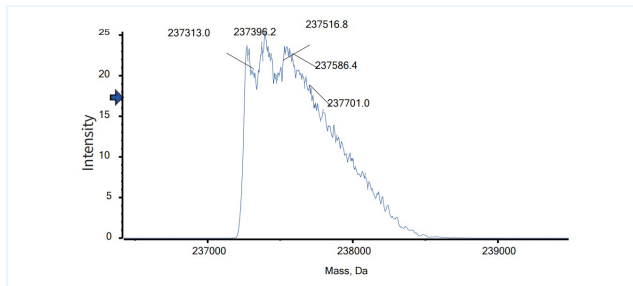


Product Details

Product name:	Anti-LAG-3 & PD-1 Reference Antibody (Emb-02)	Lot.No.:	P268008C
Target:	PDCD1 / PD-1 / CD279, LAG3 / CD223	Catalog:	CHBA062
Target Accession:	P18627 & Q15116	Concentration :	1 mg/mL
Clonality:	Bispecific	Isotype:	Fab-IgG
Reactivity:	Human	Molecular Weight (kDa) :	237.5 kDa
Application:	Kinetics (SPR), ELISA, Bioactivity: FACS, Functional assay, Research in vivo	Endotoxin:	<1 EU/mg
Formulation:	Liquid: 100mM Pro-Ac, 20mM Arg pH 5.0 Lyophilization: 25mM histidine, 8% sucrose, 0.01% Tween80 pH6.2	Conjugation:	Unconjugated
Reconstitution:	For Powder, reconstitute with sterile, distilled water to a final concentration of 1 mg/ml. Gently shake to solubilize completely. Do not vortex.	Expression System:	CHO
Storage:	Upon receipt, store immediately at -20°C or lower for 24 months. Store aliquots at -80°C for up to 3 months. Avoid repeated freeze-thaw cycles.	Purification:	Protein A

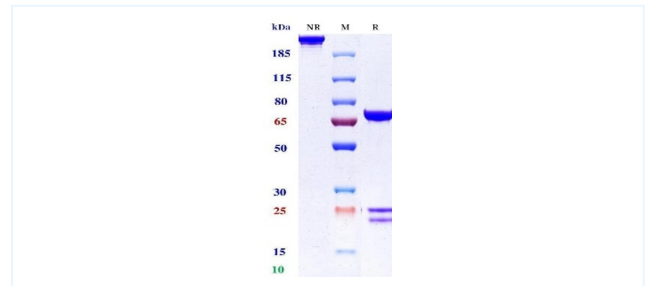
Data

MASS



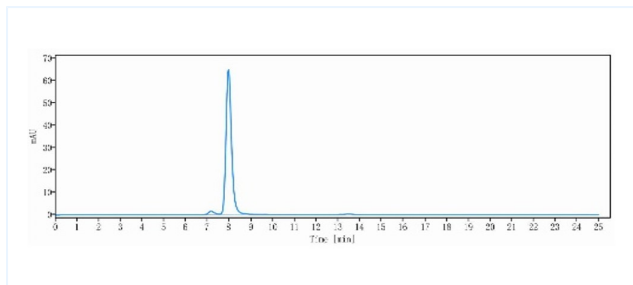
The detected molecular weight of Anti-LAG-3 & PD-1 Reference Antibody (Emb-02) is 237.40 kDa.

Purity: SDS-PAGE



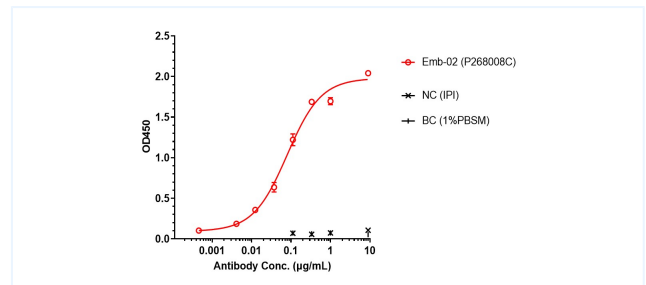
Anti-LAG-3 & PD-1 Reference Antibody (Emb-02) on SDS-PAGE under reducing (R) condition. The purity of the protein is greater than 95%.

Purity: SEC-HPLC



Anti-LAG-3 & PD-1 Reference Antibody (Emb-02) is 97.15%, determined by SEC-HPLC.

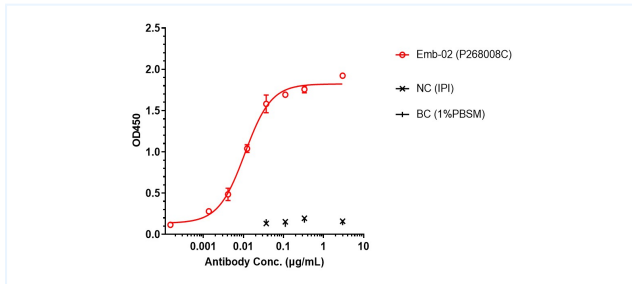
ELISA



Emb-02 bound to LAG-3 protein, and then rebounded to secondary antibodies (Anti-Human-IgG-Fc-HRP), and read OD450. As shown in fig, Emb-02 bound human LAG-3 Protein-His, and the EC50 was 0.080 nM.

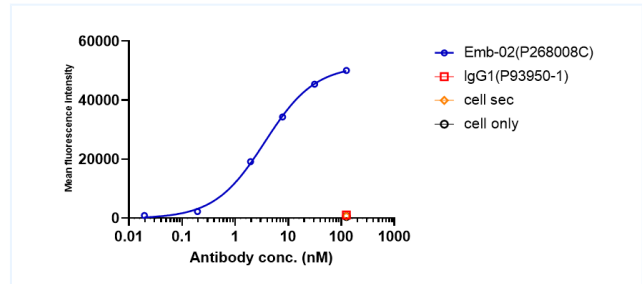
The products are for research use only. Not for use in diagnostic procedures.

ELISA



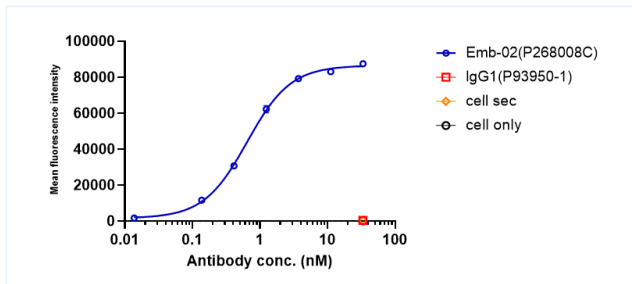
Emb-02 bound to PD-1 protein, and then rebounded to secondary antibodies(Anti-Human-IgG-Fc-HRP), and read OD450. As shown in fig, Emb-02 bound human PD-1 Protein-His, and the EC50 was 0.011 nM.

Bioactivity: FACS



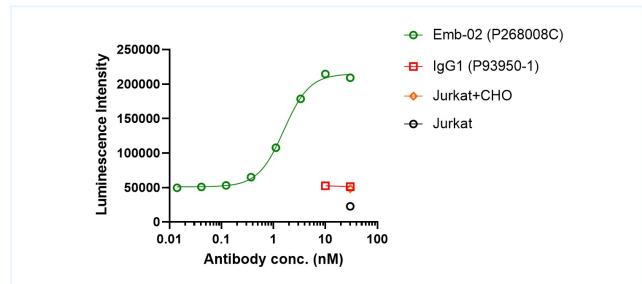
Emb-02 bound to huLAG-3-CHO-K cells, and then rebounded to fluorescent secondary antibodies(Anti-Human IgG, Fcy PE), and test by flow cytometry. As shown in fig, Emb-02 bound to huLAG-3-CHO-K cells, and the EC50 was 3.630 nM.

Bioactivity: FACS



Emb-02 bound to huPD-1-Jurkat cells, and then rebounded to fluorescent secondary antibodies(Anti-Human IgG, Fcy PE), and test by flow cytometry. As shown in fig, Emb-02 bound to huPD-1-Jurkat cells, and the EC50 was 0.645 nM.

Function: Luciferase



Co-incubation of Emb-02 with PD-1-NF-AT-Jurkat and CD3L-huPD-L1-CHO-K cells and incubated for 6 hours. Bright-Lite was used to detect the fluorescent signal. As shown in fig, Emb-02 was able to block the PD-1/PD-L1 signaling pathway, and the EC50 was 1.585 nM.

The products are for research use only. Not for use in diagnostic procedures.