



CERTIFICATE OF ANALYSIS

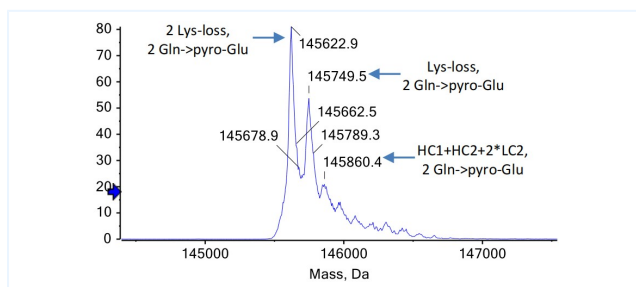


Product Details

Product name:	Anti-cMet & EGFR Reference Antibody (Amivantamab)	Lot.No.:	P268282-P268283-2
Target:	HGFR / c-Met, ERBB1 / EGFR / HER1	Catalog:	CHBA048
Target Accession:	P08581 & P00533	Concentration :	1 mg/mL
Clonality:	Bispecific	Isotype:	IgG-like
Reactivity:	Human	Molecular Weight (kDa) :	145.9 kDa
Application:	Kinetics (SPR), ELISA, Bioactivity: FACS, Functional assay, Research in vivo	Endotoxin:	<1 EU/mg
Formulation:	Liquid: 100mM Pro-Ac, 20mM Arg pH 5.0 Lyophilization: 25mM histidine, 8% sucrose, 0.01% Tween80 pH6.2	Conjugation:	Unconjugated
Reconstitution:	For Powder, reconstitute with sterile, distilled water to a final concentration of 1 mg/ml. Gently shake to solubilize completely. Do not vortex.	Expression System:	CHO
Storage:	Upon receipt, store immediately at -20°C or lower for 24 months. Store aliquots at -80°C for up to 3 months. Avoid repeated freeze-thaw cycles.	Purification:	Protein A

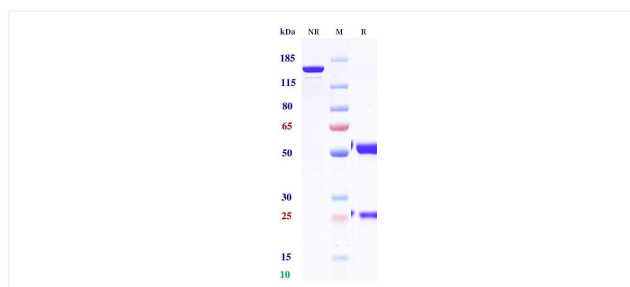
Data

MASS



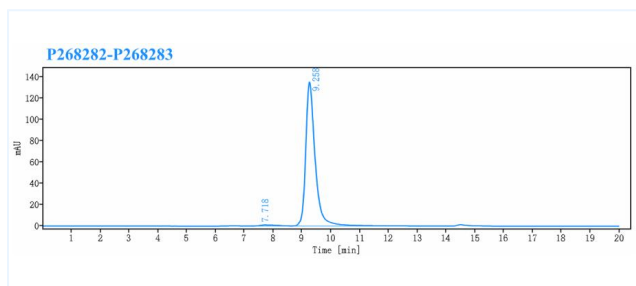
The detected molecular weight of Anti-EGFR & c-Met Reference Antibody (Amivantamab) is 145.62 kDa.

Purity: SDS-PAGE



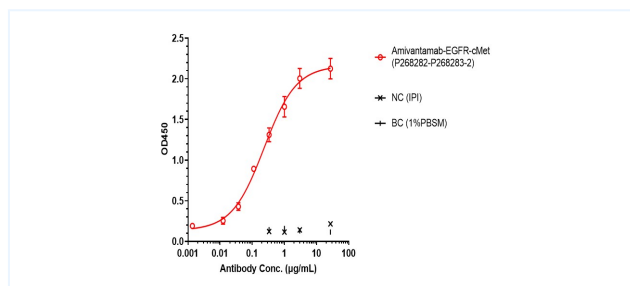
Anti-cMet & EGFR Reference Antibody (Amivantamab) on SDS-PAGE under reducing (R) condition. The purity of the protein is greater than 95%.

Purity: SEC-HPLC



The purity of Anti-cMet & EGFR Reference Antibody (Amivantamab) is 98.79%, determined by SEC-HPLC.

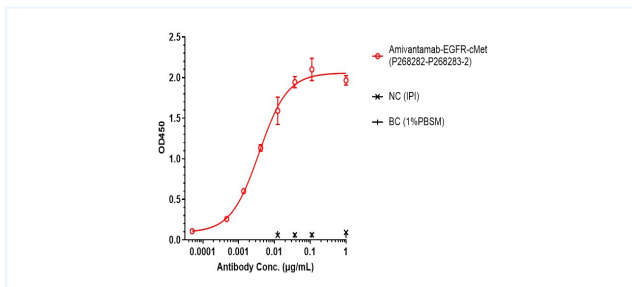
ELISA



Amivantamab bound to ERBB1/EGFR/HER1 protein, and then rebounded to secondary antibodies(Anti-Human- κ + λ -HRP) , and read OD450. As shown in fig, Amivantamab bound human ERBB1/EGFR/HER1 Protein-Fc, and the EC50 was 0.232 nM.

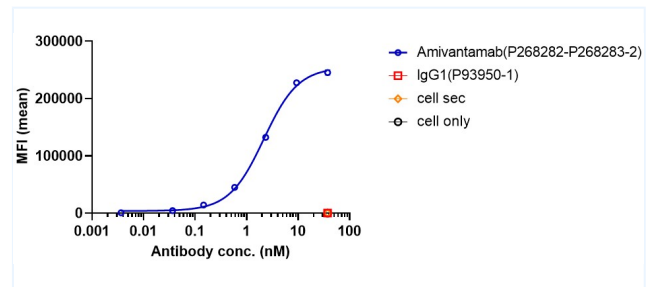
The products are for research use only. Not for use in diagnostic procedures.

ELISA



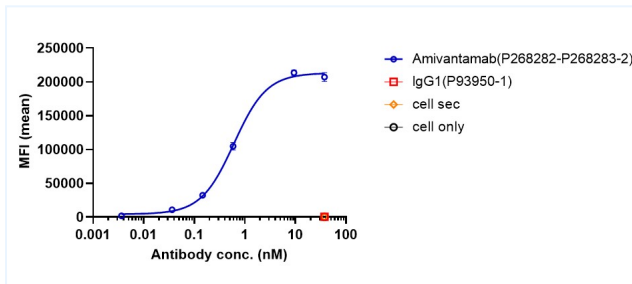
Amivantamab bound to cMet protein, and then rebounded to secondary antibodies(Anti-Human-IgG-Fc-HRP), and read OD450. As shown in fig, Amivantamab bound human cMet Protein-His, and the EC50 was 0.004 nM.

Bioactivity: FACS



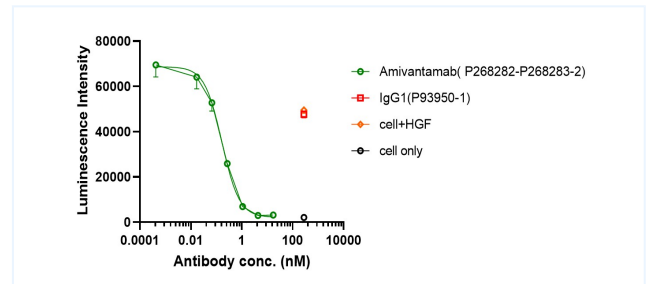
Amivantamab bound to EGFR-CHO-K cells, and then rebounded to fluorescent secondary antibodies(Anti-Human IgG, Fcy PE), and test by flow cytometry. As shown in fig, Amivantamab bound to EGFR-CHO-K cells, and the EC50 was 2.161 nM.

Bioactivity: FACS



Amivantamab bound to huMet-HEK293(A3) cells, and then rebounded to fluorescent secondary antibodies(Anti-Human IgG, Fcy PE), and test by flow cytometry. As shown in fig, Amivantamab bound to huMet-HEK293(A3) cells, and the EC50 was 0.609 nM.

Function: Luciferase



Co-incubation of Amivantamab with HGF, then with the addition of Human c-MET (Luc) HEK293 Reporter cells and incubated for 6 hours. Bright-Lite was used to detect the fluorescent signal. As shown in fig, Amivantamab was able to block HGF/c-Met signaling pathway, and the IC50 was 0.166 nM.

The products are for research use only. Not for use in diagnostic procedures.