



CERTIFICATE OF ANALYSIS

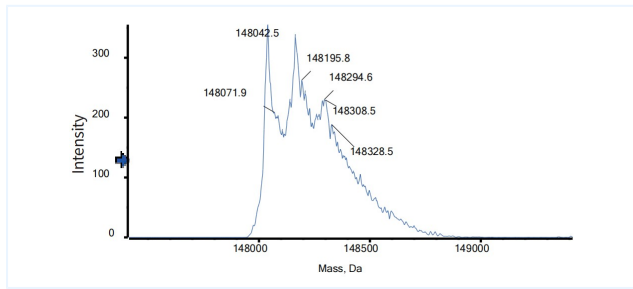


Product Details

Product name:	Anti-LILRB1 & LILRB2 Reference Antibody (Ngm707)	Lot.No.:	P268014
Target:	LILRB2 / ILT4 / CD85d, LILRB1 / ILT2 / CD85j	Catalog:	CHBA041
Target Accession:	Q8NHL6 & Q8N423	Concentration :	1 mg/mL
Clonality:	Bispecific	Isotype:	IgG-like
Reactivity:	Human	Molecular Weight (kDa) :	148.32 kDa
Application:	Kinetics (SPR), ELISA, Bioactivity: FACS, Functional assay, Research in vivo	Endotoxin:	<1 EU/mg
Formulation:	Liquid: 100mM Pro-Ac, 20mM Arg pH 5.0 Lyophilization: 25mM histidine, 8% sucrose, 0.01% Tween80 pH6.2	Conjugation:	Unconjugated
Reconstitution:	For Powder, reconstitute with sterile, distilled water to a final concentration of 1 mg/ml. Gently shake to solubilize completely. Do not vortex.	Expression System:	CHO
Storage:	Upon receipt, store immediately at -20°C or lower for 24 months. Store aliquots at -80°C for up to 3 months. Avoid repeated freeze-thaw cycles.	Purification:	Protein A

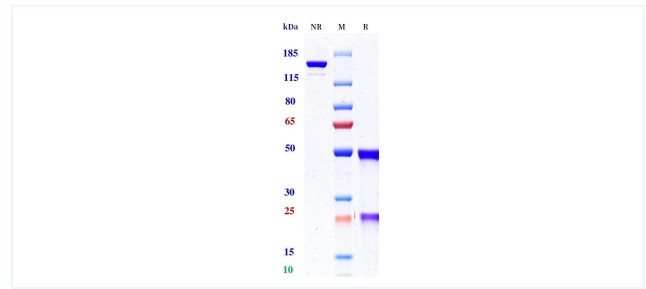
Data

MASS



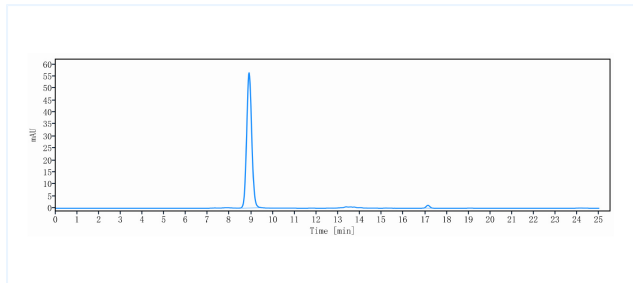
The detected molecular weight of Anti-LILRB1 & LILRB2 Reference Antibody (Ngm707) is 148.04 kDa.

Purity: SDS-PAGE



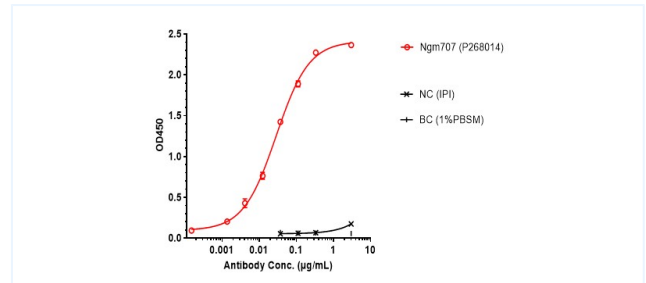
Anti-LILRB2 & LILRB4 Reference Antibody (Ngm707) on SDS-PAGE under reducing (R) condition. The purity of the protein is greater than 95%.

Purity: SEC-HPLC



The purity of Anti-LILRB2 & LILRB4 Reference Antibody (Ngm707) is 98.61%, determined by SEC-HPLC.

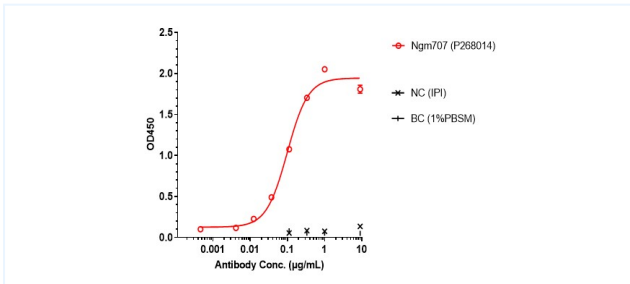
ELISA



Ngm707 bound to LILRB1 protein, and then rebounded to secondary antibodies(Anti-Human-IgG-Fc-HRP), and read OD450. As shown in fig, Ngm707 bound to hu LILRB1-ECD-His, and the EC50 was 0.029 nM.

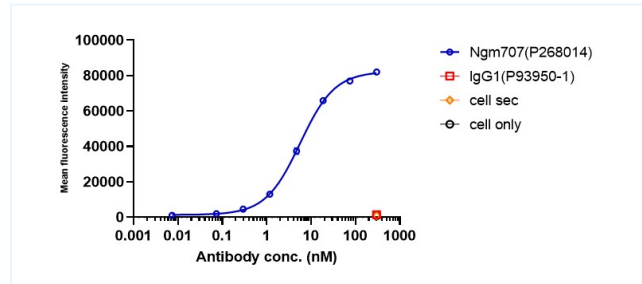
The products are for research use only. Not for use in diagnostic procedures.

ELISA



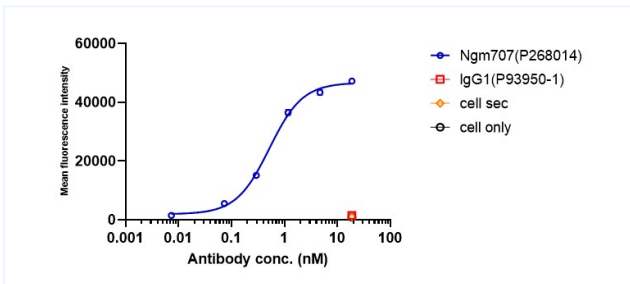
Ngm707 bound to LILRB2 protein, and then rebounded to secondary antibodies(Anti-Human-IgG-Fc-HRP) , and read OD450. As shown in fig, Ngm707 bound to hu LILRB2-ECD-His, and the EC50 was 0.099 nM.

Bioactivity: FACS



Ngm707 bound to Human-LILRB1-CHO_S(A6) cells, and then rebounded to fluorescent secondary antibodies(Anti-Human IgG, Fcy PE) , and test by flow cytometry. As shown in fig, Ngm707 bound to Human-LILRB1-CHO_S(A6) cells, and the EC50 was 5.679 nM.

Bioactivity: FACS



Ngm707 bound to huLILRB2-HEK293(A1) cells, and then rebounded to fluorescent secondary antibodies(Anti-Human IgG, Fcy PE) , and test by flow cytometry. As shown in fig, Ngm707 bound to huLILRB2-HEK293(A1) cells, and the EC50 was 0.519 nM.

The products are for research use only. Not for use in diagnostic procedures.