



CERTIFICATE OF ANALYSIS

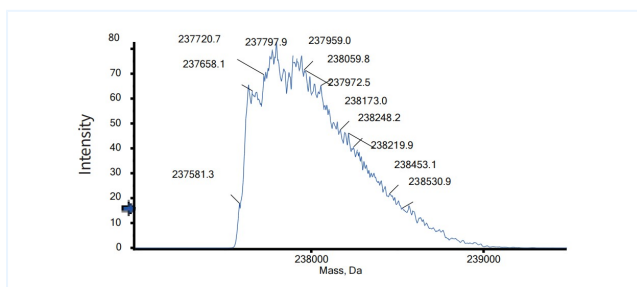


Product Details

Product name:	Anti-cMet & EGFR Reference Antibody (Emb01)	Lot.No.:	P267997C
Target:	HGFR / c-Met, ERBB1 / EGFR / HER1	Catalog:	CHBA032
Target Accession:	P08581 & P00533	Concentration :	1 mg/mL
Clonality:	Bispecific	Isotype:	Fab-IgG
Reactivity:	Human	Molecular Weight (kDa) :	237.9 kDa
Application:	Kinetics (SPR), ELISA, Bioactivity: FACS, Functional assay, Research in vivo	Endotoxin:	<1 EU/mg
Formulation:	Liquid: 100mM Pro-Ac, 20mM Arg pH 5.0 Lyophilization: 25mM histidine, 8% sucrose, 0.01% Tween80 pH6.2	Conjugation:	Unconjugated
Reconstitution:	For Powder, reconstitute with sterile, distilled water to a final concentration of 1 mg/ml. Gently shake to solubilize completely. Do not vortex.	Expression System:	CHO
Storage:	Upon receipt, store immediately at -20°C or lower for 24 months. Store aliquots at -80°C for up to 3 months. Avoid repeated freeze-thaw cycles.	Purification:	Protein A

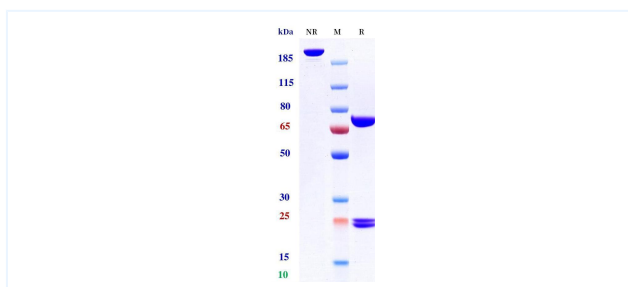
Data

MASS



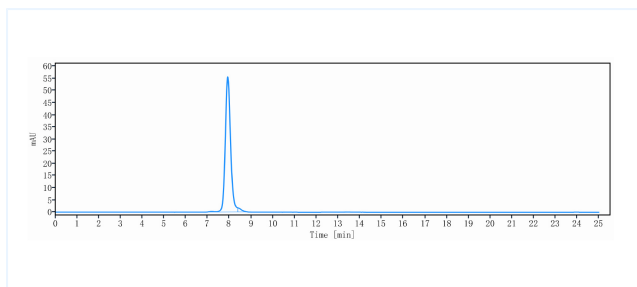
The detected molecular weight of Anti-cMet & EGFR Reference Antibody (Emb01) is 237.80 kDa.

Purity: SDS-PAGE



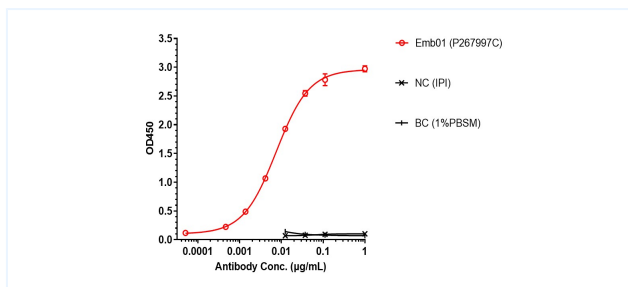
Anti-cMet & EGFR Reference Antibody (Emb01) on SDS-PAGE under reducing (R) condition. The purity of the protein is greater than 95%.

Purity: SEC-HPLC



The purity of Anti-cMet & EGFR Reference Antibody (Emb01) is 97.60%, determined by SEC-HPLC.

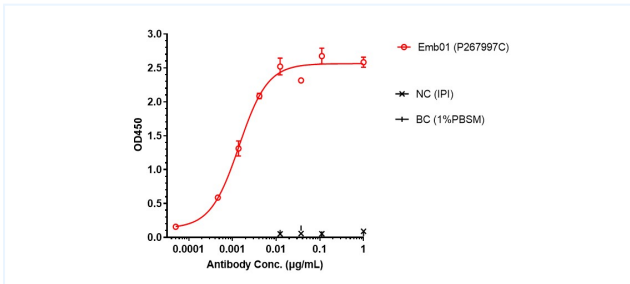
ELISA



Emb-01 bound to cMet protein, and then rebounded to secondary antibodies(Anti-human-IgG-Fc-HRP), and read OD450. As shown in fig, Emb-01 bound to cMet-His, and the EC50 was 0.007 nM.

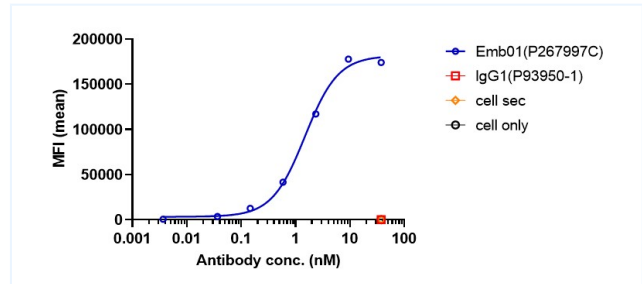
The products are for research use only. Not for use in diagnostic procedures.

ELISA



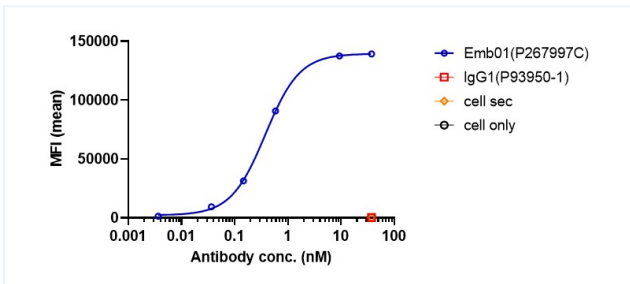
Emb-01 bound to EGFR protein, and then rebounded to secondary antibodies(Anti-human-IgG-Fc-HRP), and read OD450. As shown in fig, Emb-01 bound to EGFR-His, and the EC50 was 0.001 nM.

Bioactivity: FACS



Emb-01 bound to EGFR-CHO-K cells, and then rebounded to fluorescent secondary antibodies(Anti-human IgG, Fcy PE), and test by flow cytometry. As shown in fig, Emb-01 bound to EGFR-CHO-K cells, and the EC50 was 1.489 nM.

Bioactivity: FACS



Emb01 bound to huMet-HEK293 cells, and then rebounded to fluorescent secondary antibodies(Anti-human IgG, Fcy PE), and test by flow cytometry. As shown in fig, Emb-01 bound to huMet-HEK293 cells, and the EC50 was 0.378 nM.

The products are for research use only. Not for use in diagnostic procedures.