



CERTIFICATE OF ANALYSIS

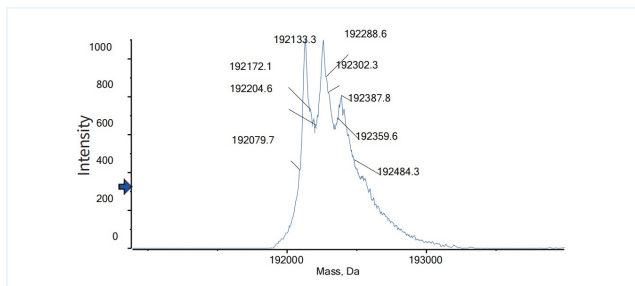


Product Details

| | | | |
|----------------------|---|-----------------------------|--------------|
| Product name: | Anti-BCMA & CD3 Reference Antibody (Alnuctamab) | Lot.No.: | P267979C |
| Target: | TNFRSF17 / BCMA / CD269, CD3 | Catalog: | CHBA030 |
| Target Accession: | Q02223 & P07766 | Concentration : | 1 mg/mL |
| Clonality: | Bispecific | Isotype: | IgG-Fab |
| Reactivity: | Human | Molecular Weight (kDa) : | 192.35 kDa |
| Application: | Kinetics (SPR), ELISA, Bioactivity: FACS, Functional assay, Research in vivo | Endotoxin: | <1 EU/mg |
| Formulation: | Liquid: 100mM Pro-Ac, 20mM Arg pH 5.0 Lyophilization: 25mM histidine, 8% sucrose, 0.01% Tween80 pH6.2 | Conjugation: | Unconjugated |
| Reconstitution: | For Powder, reconstitute with sterile, distilled water to a final concentration of 1 mg/ml. Gently shake to solubilize completely. Do not vortex. | Expression System: | CHO |
| Storage: | Upon receipt, store immediately at -20°C or lower for 24 months. Store aliquots at -80°C for up to 3 months. Avoid repeated freeze-thaw cycles. | Purification: | Protein A |

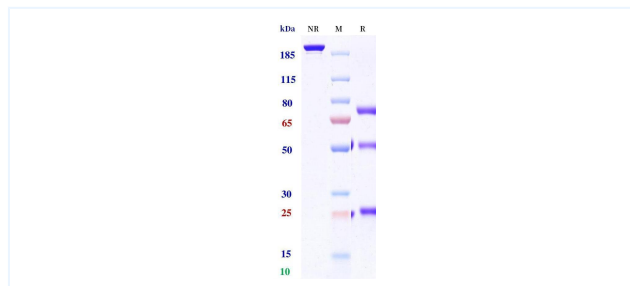
Data

MASS



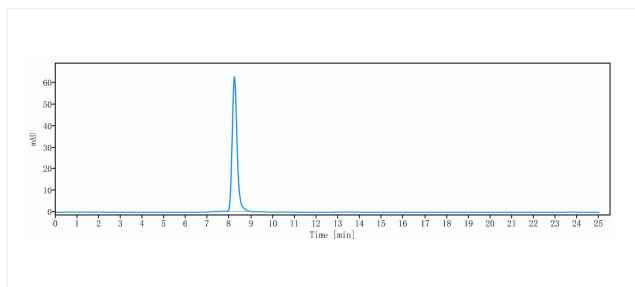
The detected molecular weight of Anti-BCMA & CD3 Reference Antibody (Alnuctamab) is 192.13 kDa.

Purity: SDS-PAGE



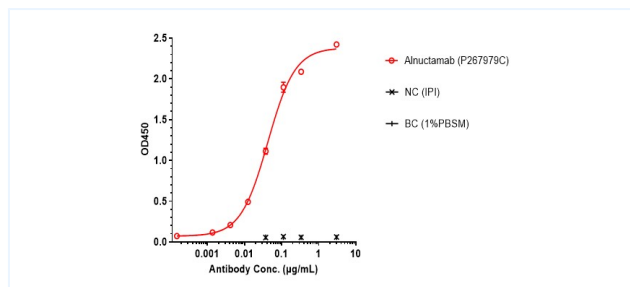
Anti-BCMA & CD3 Reference Antibody (Alnuctamab) on SDS-PAGE under reducing (R) condition. The purity of the protein is greater than 95%.

Purity: SEC-HPLC



The purity of Anti-BCMA & CD3 Reference Antibody (Alnuctamab) is 100.00%, determined by SEC-HPLC.

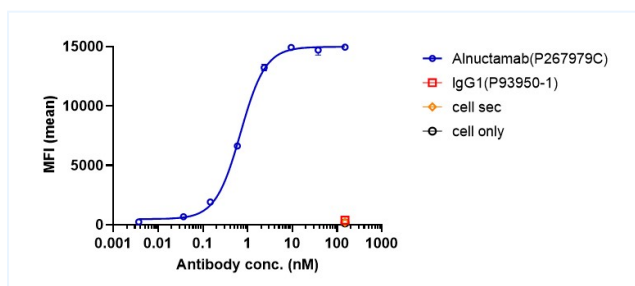
ELISA



Alnuctamab bound to BCMA protein, and then rebounded to secondary antibodies (Anti-human-IgG-Fc-HRP), and read OD450. As shown in fig, Alnuctamab bound to huBCMA-ECD-His, and the EC50 was 0.042 nM.

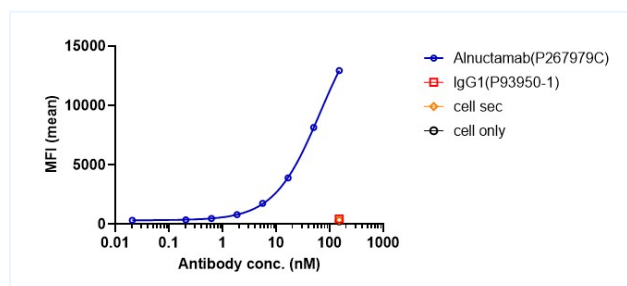
The products are for research use only. Not for use in diagnostic procedures.

Bioactivity: FACS



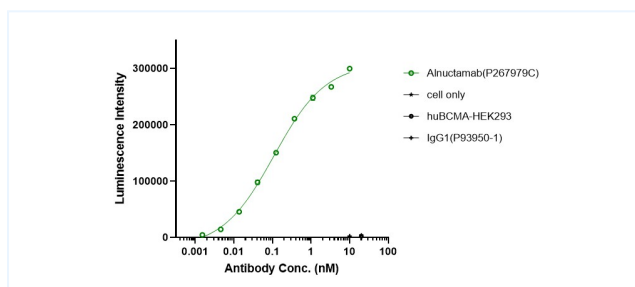
Alnuclamab bound to huBCMA-HEK293 cells, and then rebounded to fluorescent secondary antibodies (Anti-human IgG, Fcy PE), and test by flow cytometry. As shown in fig, Alnuclamab bound to huBCMA-HEK293 cells, and the EC50 was 0.693 nM.

Bioactivity: FACS



Alnuclamab bound to huCD3e-jurkat cells, and then rebounded to fluorescent secondary antibodies (Anti-human IgG, Fcy PE), and test by flow cytometry. As shown in fig, Alnuclamab bound to huCD3e-jurkat cells, and the EC50 was 66.190 nM.

Function: Luciferase



Co-incubation of Alnuclamab with Jurkat cells, then with the addition of huBCMA-HEK293 cells for 6 hours. Bright-Lite was used to detect the fluorescent signal. As shown in fig, Alnuclamab was able to activate the NF-AT signaling pathway, and the EC50 was 0.110 nM.

The products are for research use only. Not for use in diagnostic procedures.