



CERTIFICATE OF ANALYSIS

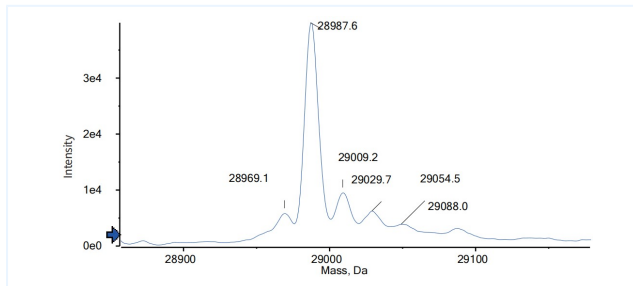


Product Details

Product name:	Anti-C5 & Serum Albumin Reference Antibody (Gefurulimab)	Lot.No.:	P247896
Target:	Complement C5, Serum Albumin / SA / HSA	Catalog:	CHBA022
Target Accession:	P01031 & P02768	Concentration :	1 mg/mL
Clonality:	Bispecific	Isotype:	VHH-VHH
Reactivity:	Human	Molecular Weight (kDa) :	28.99 kDa
Application:	Kinetics (SPR), ELISA, Bioactivity: FACS, Functional assay, Research in vivo	Endotoxin:	<1 EU/mg
Formulation:	Liquid: 100mM Pro-Ac, 20mM Arg pH 5.0 Lyophilization: 25mM histidine, 8% sucrose, 0.01% Tween80 pH6.2	Conjugation:	Unconjugated
Reconstitution:	For Powder, reconstitute with sterile, distilled water to a final concentration of 1 mg/ml. Gently shake to solubilize completely. Do not vortex.	Expression System:	CHO
Storage:	Upon receipt, store immediately at -20°C or lower for 24 months. Store aliquots at -80°C for up to 3 months. Avoid repeated freeze-thaw cycles.	Purification:	Protein A

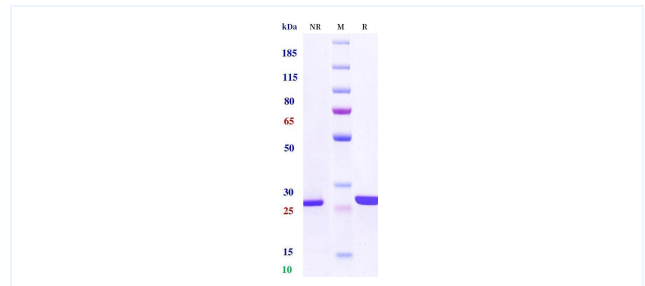
Data

MASS



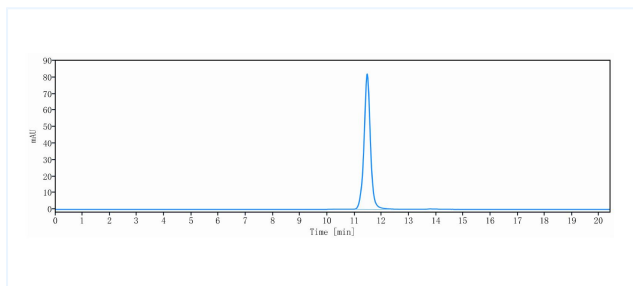
The detected molecular weight of Anti-C5 & Serum Albumin Reference Antibody (Gefurulimab) is 28.99 kDa.

Purity: SDS-PAGE



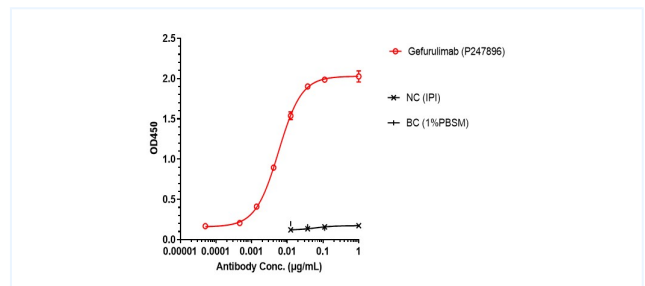
Anti-C5 & Serum Albumin Reference Antibody (Gefurulimab) on SDS-PAGE under reducing (R) condition. The purity of the protein is greater than 95%.

Purity: SEC-HPLC



The purity of Anti-C5 & Serum Albumin Reference Antibody (Gefurulimab) is 100.00%, determined by SEC-HPLC.

ELISA



Gefurulimab bound to HSA protein, and then rebounded to secondary antibodies (Anti-human- κ + λ -HRP), and read OD450. As shown in fig, Gefurulimab bound to HSA-Fc, and the EC50 was 0.006 nM.

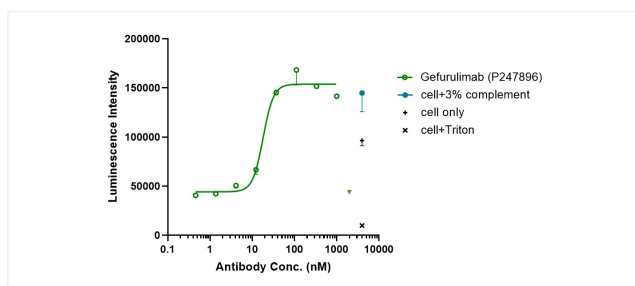
The products are for research use only. Not for use in diagnostic procedures.



CERTIFICATE OF ANALYSIS



Function: Luciferase



Co-incubation of Gefurulimab with complement protein, then with the addition of Rituximab and Raji cells and incubated for 4 hours. CTG was used to detect the luciferase signal. As shown in fig, Gefurulimab can block rituximab-induced CDC killing, and the IC₅₀ was 18.090 nM.

The products are for research use only. Not for use in diagnostic procedures.