



CERTIFICATE OF ANALYSIS

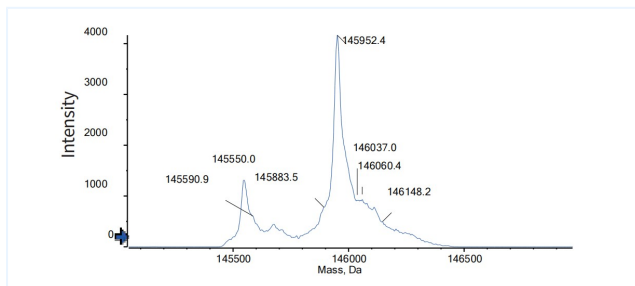


Product Details

Product name:	Anti-BCMA & CD3 Reference Antibody (Linvoseltamab)	Lot.No.:	P247892
Target:	TNFRSF17 / BCMA / CD269, CD3	Catalog:	CHBA019
Target Accession:	Q02223 & P07766	Concentration :	1 mg/mL
Clonality:	Bispecific	Isotype:	IgG-like
Reactivity:	Human	Molecular Weight (kDa) :	145.78 kDa
Application:	Kinetics (SPR), ELISA, Bioactivity: FACS, Functional assay, Research in vivo	Endotoxin:	<1 EU/mg
Formulation:	Liquid: 100mM Pro-Ac, 20mM Arg pH 5.0 Lyophilization: 25mM histidine, 8% sucrose, 0.01% Tween80 pH6.2	Conjugation:	Unconjugated
Reconstitution:	For Powder, reconstitute with sterile, distilled water to a final concentration of 1 mg/ml. Gently shake to solubilize completely. Do not vortex.	Expression System:	CHO
Storage:	Upon receipt, store immediately at -20°C or lower for 24 months. Store aliquots at -80°C for up to 3 months. Avoid repeated freeze-thaw cycles.	Purification:	Protein A

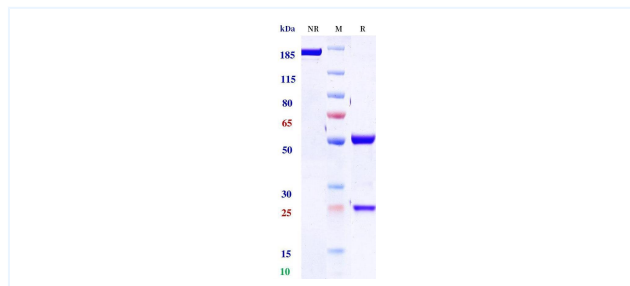
Data

MASS



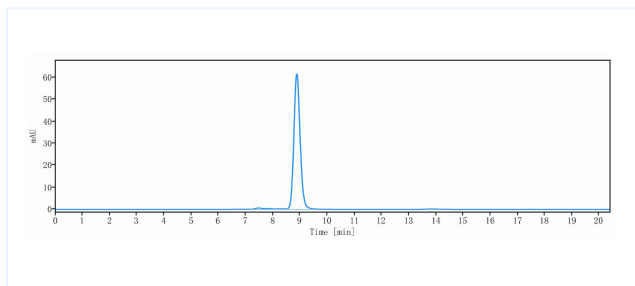
The detected molecular weight of Anti-BCMA & CD3 Reference Antibody (Linvoseltamab) is 145.95 kDa.

Purity: SDS-PAGE



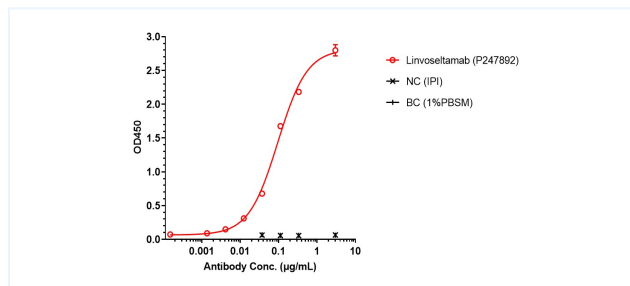
Anti-BCMA & CD3 Reference Antibody (Linvoseltamab) on SDS-PAGE under reducing (R) condition. The purity of the protein is greater than 95%.

Purity: SEC-HPLC



The purity of Anti-BCMA & CD3 Reference Antibody (Linvoseltamab) is 97.71%, determined by SEC-HPLC.

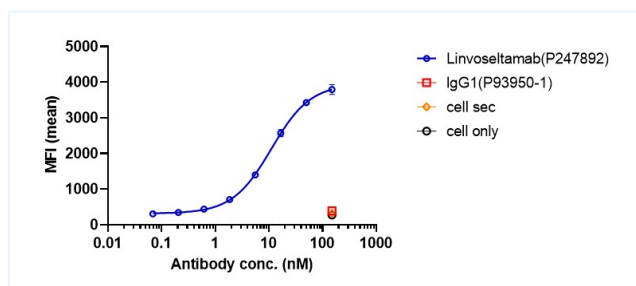
ELISA



Linvoseltamab bound to BCMA protein, and then rebounded to secondary antibodies (Anti-human-IgG-Fc-HRP), and read OD450. As shown in fig, Linvoseltamab bound to huBCMA-ECD-His, and the EC50 was 0.096 nM.

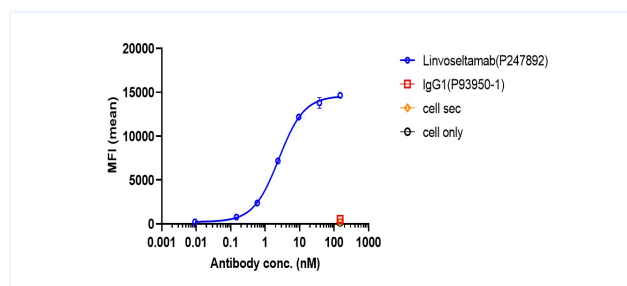
The products are for research use only. Not for use in diagnostic procedures.

Bioactivity: FACS



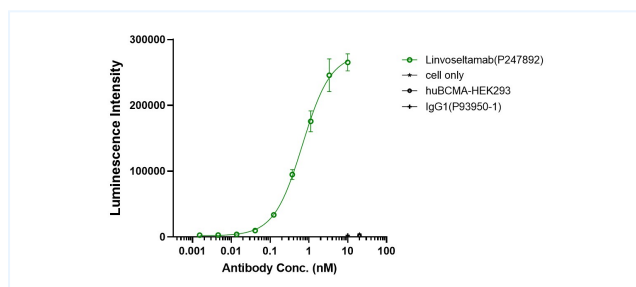
Linvoseltamab bound to Jurkat cells, and then rebounded to fluorescent secondary antibodies (Anti-human IgG, Fcy PE), and test by flow cytometry. As shown in fig, Linvoseltamab bound to Jurkat cells, and the EC50 was 11.160 nM.

Bioactivity: FACS



Linvoseltamab bound to huBCMA-HEK293 cells, and then rebounded to fluorescent secondary antibodies (Anti-human IgG, Fcy PE), and test by flow cytometry. As shown in fig, Linvoseltamab bound to huBCMA-HEK293 cells, and the EC50 was 2.486 nM.

Function: Luciferase



Co-incubation of Linvoseltamab with Jurkat cells, then with the addition of huBCMA-HEK293 cells for 6 hours. Bright-Lite was used to detect the fluorescent signal. As shown in fig, Linvoseltamab was able to activate the NF-AT signaling pathway, and the EC50 was 0.678 nM.

The products are for research use only. Not for use in diagnostic procedures.