



CERTIFICATE OF ANALYSIS

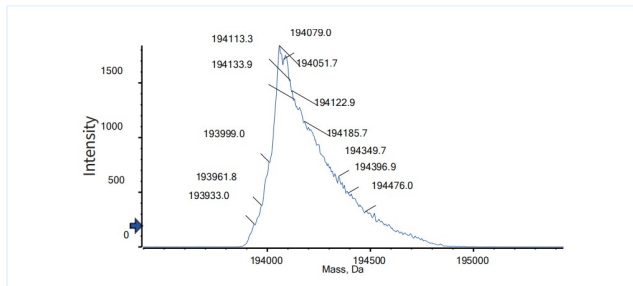


Product Details

Product name:	Anti-CD20 & CD3 Reference Antibody (Glofitamab)	Lot.No.:	P263837C
Target:	CD20, CD3	Catalog:	CHBA015
Target Accession:	P11836 & P07766	Concentration :	1 mg/mL
Clonality:	Bispecific	Isotype:	IgG-Fab
Reactivity:	Human	Molecular Weight (kDa) :	170.28 kDa
Application:	Kinetics (SPR), ELISA, Bioactivity: FACS, Functional assay, Research in vivo	Endotoxin:	<1 EU/mg
Formulation:	Liquid: 100mM Pro-Ac, 20mM Arg pH 5.0 Lyophilization: 25mM histidine, 8% sucrose, 0.01% Tween80 pH6.2	Conjugation:	Unconjugated
Reconstitution:	For Powder, reconstitute with sterile, distilled water to a final concentration of 1 mg/ml. Gently shake to solubilize completely. Do not vortex.	Expression System:	CHO
Storage:	Upon receipt, store immediately at -20°C or lower for 24 months. Store aliquots at -80°C for up to 3 months. Avoid repeated freeze-thaw cycles.	Purification:	Protein A

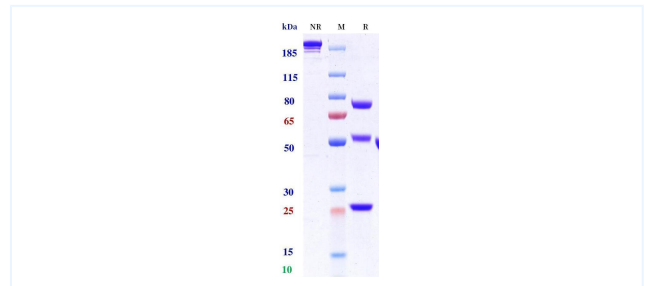
Data

MASS



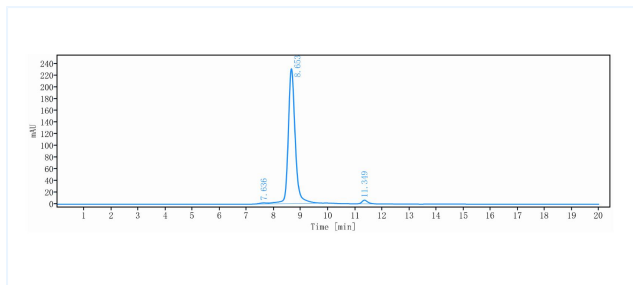
The detected molecular weight of Anti-CD20 & CD3 Reference Antibody (Glofitamab) is 194.08 kDa.

Purity: SDS-PAGE



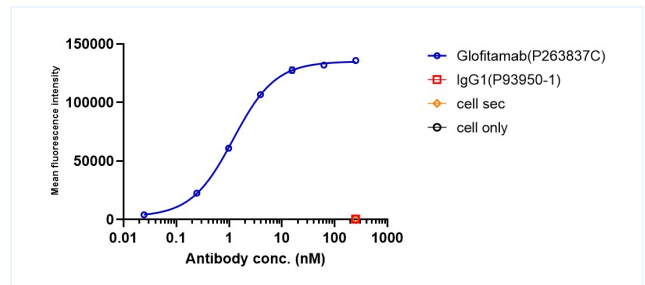
Anti-CD20 & CD3 Reference Antibody (Glofitamab) on SDS-PAGE under reducing (R) condition. The purity of the protein is greater than 95%.

Purity: SEC-HPLC



The purity of Anti-CD20 & CD3 Reference Antibody (Glofitamab) is 96.80 %, determined by SEC-HPLC.

Bioactivity: FACS



Glofitamab bound to Raji cells, and then rebounded to fluorescent secondary antibodies (Anti-Human IgG, Fcy PE), and test by flow cytometry. As shown in fig, Glofitamab bound to Raji cells, and the EC50 was 1.199 nM.

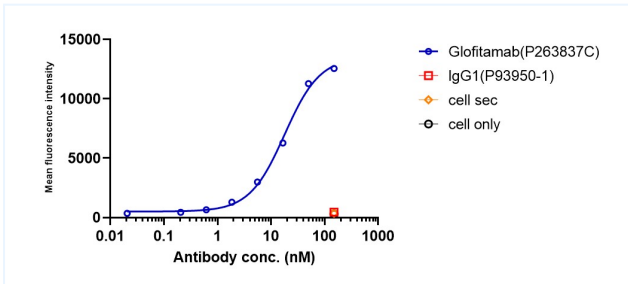
The products are for research use only. Not for use in diagnostic procedures.



CERTIFICATE OF ANALYSIS



Bioactivity: FACS



Glofitamab bound to huCD3e-jurkat cells, and then rebounded to fluorescent secondary antibodies(Anti-Human IgG, Fcy PE) , and test by flow cytometry. As shown in fig, Glofitamab bound to huCD3e-jurkat cells, and the EC50 was 17.980 nM.

The products are for research use only. Not for use in diagnostic procedures.