



CERTIFICATE OF ANALYSIS

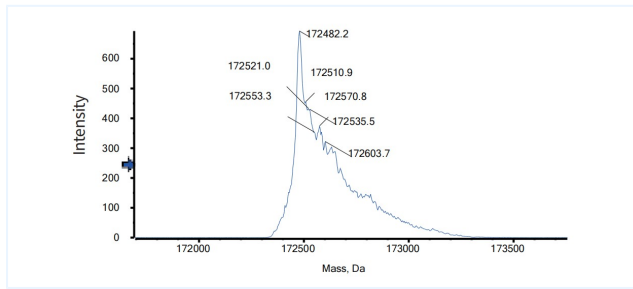


Product Details

Product name:	Anti-PD-L1 & VEGF Reference Antibody (Pm8002)	Lot.No.:	P247894
Target:	B7-H1 / PD-L1 / CD274, VEGF	Catalog:	CHBA003
Target Accession:	Q9NZQ7 & P15692	Concentration :	1 mg/mL
Clonality:	Bispecific	Isotype:	IgG-VHH
Reactivity:	Human	Molecular Weight (kDa) :	172.48 kDa
Application:	Kinetics (SPR), ELISA, Bioactivity: FACS, Functional assay, Research in vivo	Endotoxin:	<1 EU/mg
Formulation:	Liquid: 100mM Pro-Ac, 20mM Arg pH 5.0 Lyophilization: 25mM histidine, 8% sucrose, 0.01% Tween80 pH6.2	Conjugation:	Unconjugated
Reconstitution:	For Powder, reconstitute with sterile, distilled water to a final concentration of 1 mg/ml. Gently shake to solubilize completely. Do not vortex.	Expression System:	CHO
Storage:	Upon receipt, store immediately at -20°C or lower for 24 months. Store aliquots at -80°C for up to 3 months. Avoid repeated freeze-thaw cycles.	Purification:	Protein A

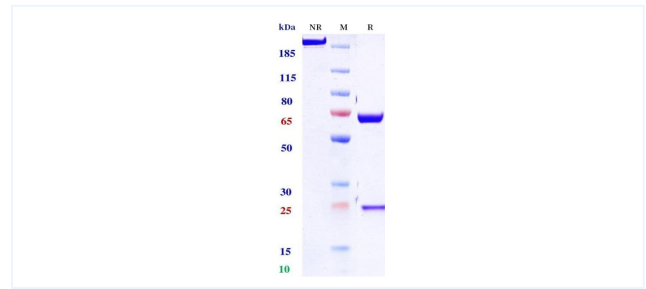
Data

MASS



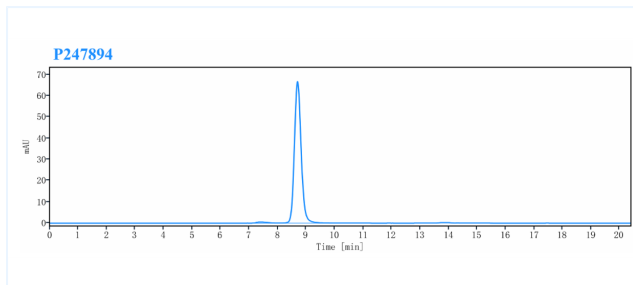
The detected molecular weight of Anti-PD-L1 & VEGF Reference Antibody (Pm8002) is 172.48 kDa.

Purity: SDS-PAGE



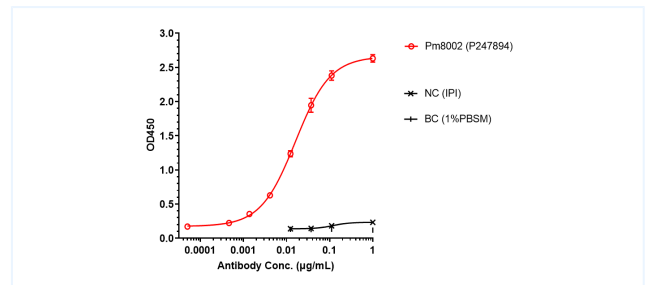
Anti-PD-L1 & VEGF Reference Antibody (Pm8002) on SDS-PAGE under reducing (R) condition. The purity of the protein is greater than 95%.

Purity: SEC-HPLC



The purity of Anti-PD-L1 & VEGF Reference Antibody (Pm8002) is 98.79%, determined by SEC-HPLC.

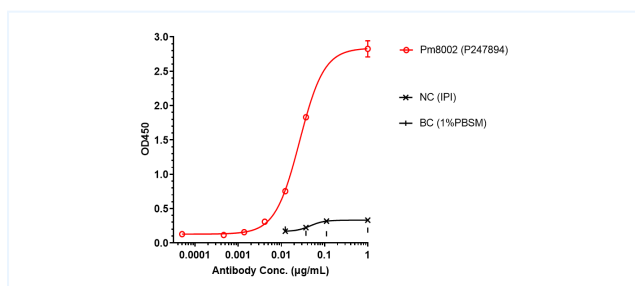
ELISA



Pm8002 bound to VEGFA protein, and then rebounded to secondary antibodies(Anti-Human-IgG-Fc-HRP), and read OD450. As shown in fig, Pm8002 bound to in human VEGFA Protein-His, and the EC50 was 0.01613 nM.

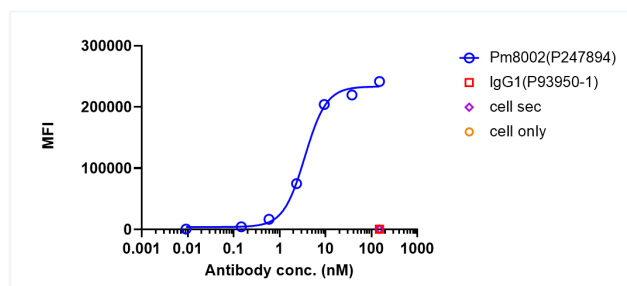
The products are for research use only. Not for use in diagnostic procedures.

ELISA



Pm8002 bound to B7-H1 / PD-L1 / CD274 protein, and then rebounded to secondary antibodies(Anti-Human- κ + λ -HRP) , and read OD450. As shown in fig, Pm8002 bound to in human B7-H1 / PD-L1 / CD274 Protein-His, and the EC50 was 0.02648 nM.

Bioactivity: FACS



Pm8002 bound to PD-L1-CHO-K cells, and then rebounded to fluorescent secondary antibodies(Anti-Human IgG, Fc γ) , and test by flow cytometry. As shown in fig, Pm8002 bound to PD-L1-CHO-K cells, and the EC50 was 3.545 nM.

The products are for research use only. Not for use in diagnostic procedures.