



CERTIFICATE OF ANALYSIS

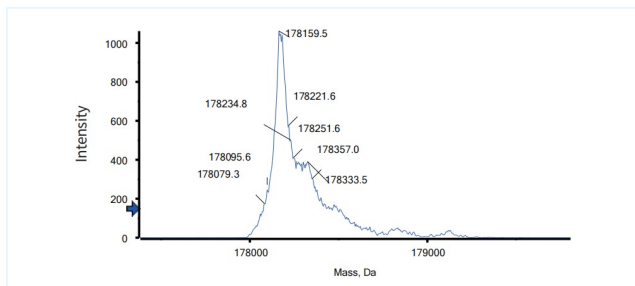


Product Details

Product name:	Anti-PD-L1 & TGF-Beta Reference Antibody (Tqb2858)	Lot.No.:	P262510
Target:	B7-H1 / PD-L1 / CD274, TGFb1	Catalog:	CHBA012
Target Accession:	Q9NZQ7 & P01137	Concentration :	1 mg/mL
Clonality:	Bispecific	Isotype:	IgG-VHH
Reactivity:	Human	Molecular Weight (kDa) :	178.22 kDa
Application:	Kinetics (SPR), ELISA, Bioactivity: FACS, Functional assay, Research in vivo	Endotoxin:	<1 EU/mg
Formulation:	Liquid: 100mM Pro-Ac, 20mM Arg pH 5.0 Lyophilization: 25mM histidine, 8% sucrose, 0.01% Tween80 pH6.2	Conjugation:	Unconjugated
Reconstitution:	For Powder, reconstitute with sterile, distilled water to a final concentration of 1 mg/ml. Gently shake to solubilize completely. Do not vortex.	Expression System:	CHO
Storage:	Upon receipt, store immediately at -20°C or lower for 24 months. Store aliquots at -80°C for up to 3 months. Avoid repeated freeze-thaw cycles.	Purification:	Protein A

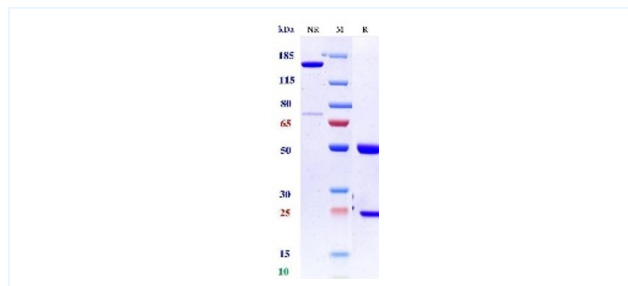
Data

MASS



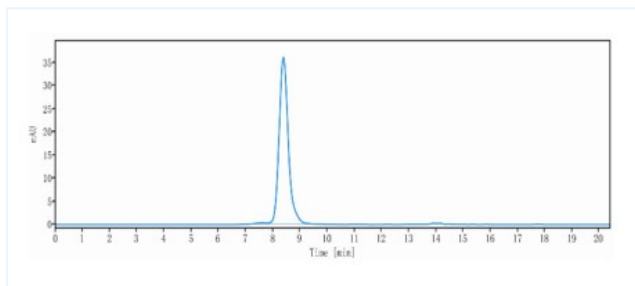
The detected molecular weight of Anti-PD-L1 & TGF-Beta Reference Antibody (Tqb2858) is 178.16 kDa.

Purity: SDS-PAGE



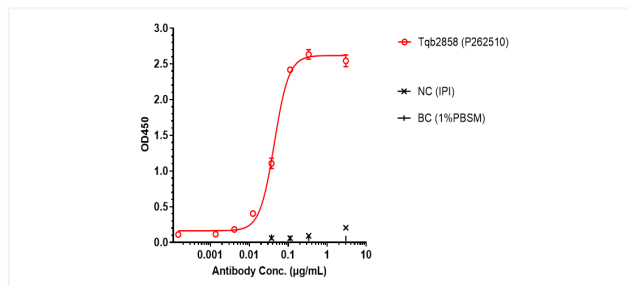
Anti-PD-L1 & TGF-Beta Reference Antibody (Tqb2858) on SDS-PAGE under reducing (R) condition. The purity of the protein is greater than 95%.

Purity: SEC-HPLC



The purity of Anti-PD-L1 & TGF-Beta Reference Antibody (Tqb2858) is 99.12%, determined by SEC-HPLC.

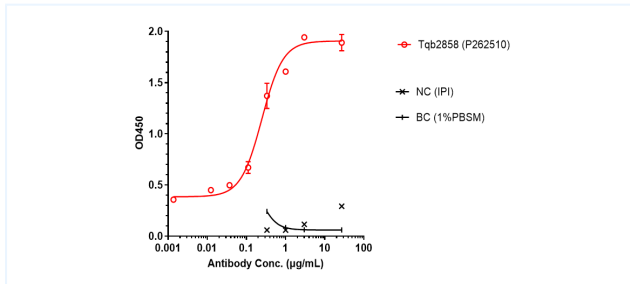
ELISA



Tqb2858 bound to PD-L1 protein, and then rebounded to secondary antibodies(Anti-Human- κ + λ -HRP), and read OD450. As shown in fig, Tqb2858 bound to huPD-L1-Fc, and the EC50 was 0.044 nM.

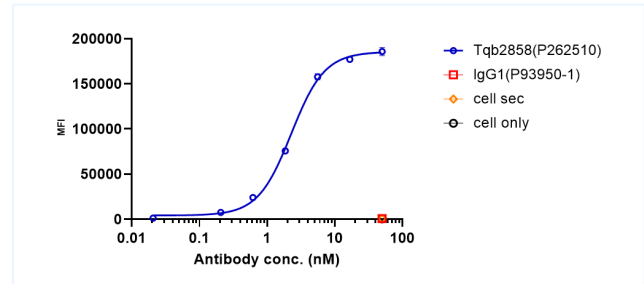
The products are for research use only. Not for use in diagnostic procedures.

ELISA



Tqb2858 bound to TGFb1 protein, and then rebounded to secondary antibodies(Anti-Human-IgG-Fc-HRP), and read OD450. As shown in fig, Tqb2858 bound to huTGFb1-His, and the EC50 was 0.248 nM.

Bioactivity: FACS



Tqb2858 bound to huPD-L1-CHO-K cells, and then rebounded to fluorescent secondary antibodies(Anti-Human IgG, Fcy PE), and test by flow cytometry. As shown in fig, Tqb2858 bound to huPD-L1-CHO-K cells, and the EC50 was 2.273 nM.

The products are for research use only. Not for use in diagnostic procedures.