



CERTIFICATE OF ANALYSIS

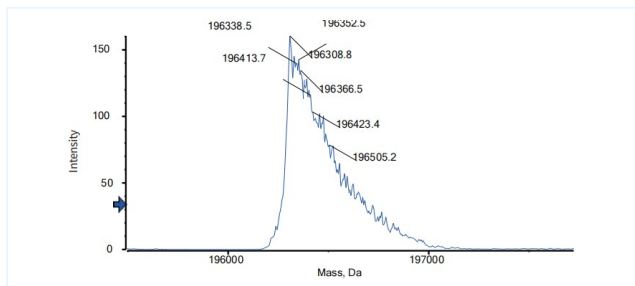


Product Details

Product name:	Anti-EGFR & Fc-gamma-RIIIA Reference Antibody (AFM24)	Lot.No.:	P247899
Target:	ERBB1 / EGFR / HER1, FcgR3a / CD16a	Catalog:	CHBA049
Target Accession:	P00533 & P08637	Concentration :	1 mg/mL
Clonality:	Bispecific	Isotype:	IgG-scFv
Reactivity:	Human	Molecular Weight (kDa) :	74.5 kDa
Application:	Kinetics (SPR), ELISA, Bioactivity: FACS, Functional assay, Research in vivo	Endotoxin:	<1 EU/mg
Formulation:	Liquid: 100mM Pro-Ac, 20mM Arg pH 5.0 Lyophilization: 25mM histidine, 8% sucrose, 0.01% Tween80 pH6.2	Conjugation:	Unconjugated
Reconstitution:	For Powder, reconstitute with sterile, distilled water to a final concentration of 1 mg/ml. Gently shake to solubilize completely. Do not vortex.	Expression System:	CHO
Storage:	Upon receipt, store immediately at -20°C or lower for 24 months. Store aliquots at -80°C for up to 3 months. Avoid repeated freeze-thaw cycles.	Purification:	Protein A

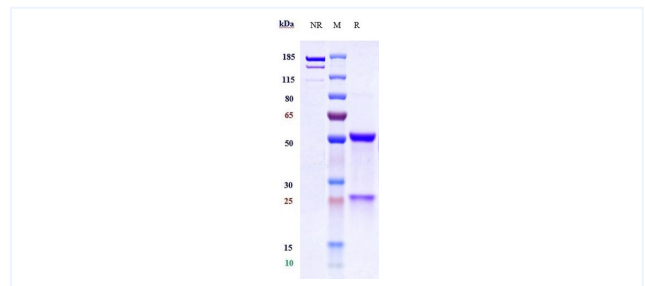
Data

MASS



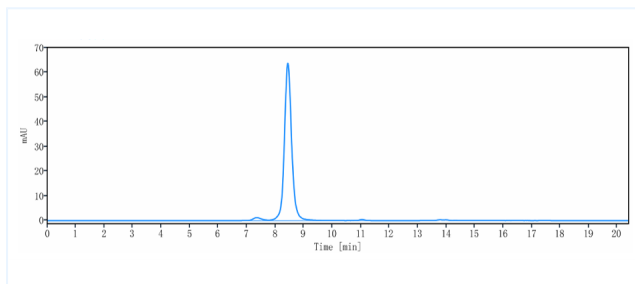
The detected molecular weight of Anti-EGFR & CD16a/Fc-gamma-RIIIA Reference Antibody (Afm24) is 196.31 kDa.

Purity: SDS-PAGE



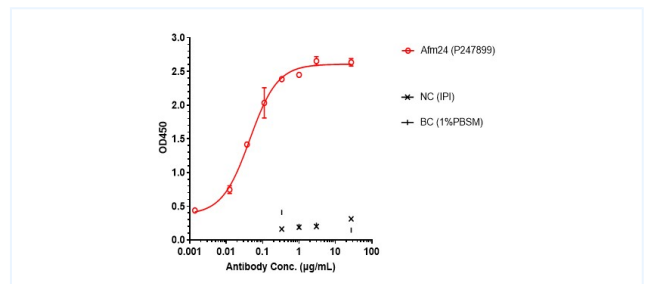
Anti-EGFR & Fc-gamma-RIIIA Reference Antibody (AFM24) on SDS-PAGE under reducing (R) condition. The purity of the protein is greater than 99.5%.

Purity: SEC-HPLC



The purity of Anti-EGFR & Fc-gamma-RIIIA Reference Antibody (AFM24) is 97.37%, determined by SEC-HPLC.

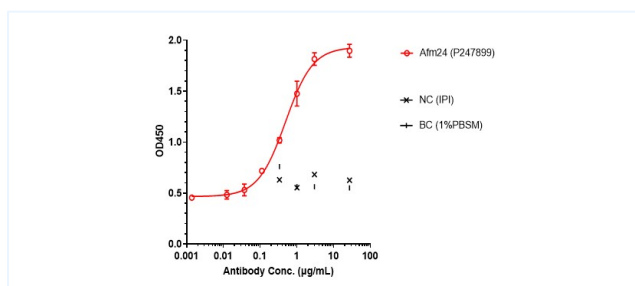
Bioactivity: ELISA



Afm24 bound to EGFR protein, and then rebounded to secondary antibodies (Anti-human-IgG-Fc-HRP), and read OD450. As shown in fig, Afm24 bound hu-EGFR-His, and the EC50 was 0.044 nM.

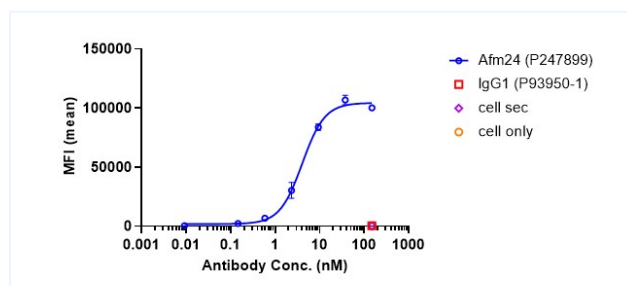
The products are for research use only. Not for use in diagnostic procedures.

Bioactivity: FACS



Afm24 bound to CD16a protein, and then rebounded to secondary antibodies (Anti-human-IgG-Fc-HRP), and read OD450. As shown in fig, Afm24 bound hu-CD16a-His, and the EC50 was 0.489 nM.

Bioactivity: FACS



Afm24 bound to EGFR-CHO-K cells, and then rebounded to fluorescent secondary antibodies (Anti-human IgG, Fcy PE), and test by flow cytometry. As shown in fig, Afm24 bound to EGFR-CHO-K cells, and the EC50 was 4.075 nM.

The products are for research use only. Not for use in diagnostic procedures.