



# CERTIFICATE OF ANALYSIS

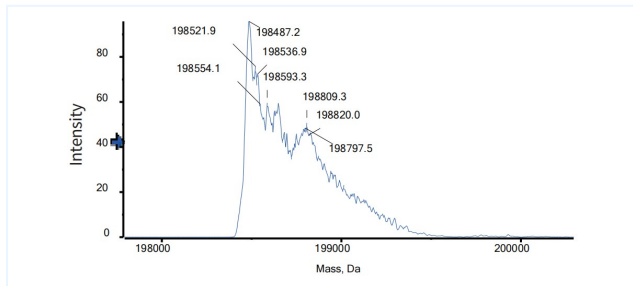


## Product Details

Product name:	Anti-TNFalpha & IL-17 Reference Antibody (Remtolumab)	Lot.No.:	P267987
Target:	TNFSF2 / TNFa, IL-17 / IL-17A / CTLA-8	Catalog:	CHBA020
Target Accession:	P01375 & Q16552-1	Concentration :	1 mg/mL
Clonality:	Bispecific	Isotype:	DVD-Ig
Reactivity:	Human	Molecular Weight (kDa) :	198.56 kDa
Application:	Kinetics (SPR), ELISA, Bioactivity: FACS, Functional assay, Research in vivo	Endotoxin:	<1 EU/mg
Formulation:	Liquid: 100mM Pro-Ac, 20mM Arg pH 5.0   Lyophilization: 25mM histidine, 8% sucrose, 0.01% Tween80 pH6.2	Conjugation:	Unconjugated
Reconstitution:	For Powder, reconstitute with sterile, distilled water to a final concentration of 1 mg/ml. Gently shake to solubilize completely. Do not vortex.	Expression System:	CHO
Storage:	Upon receipt, store immediately at -20°C or lower for 24 months. Store aliquots at -80°C for up to 3 months. Avoid repeated freeze-thaw cycles.	Purification:	Protein A

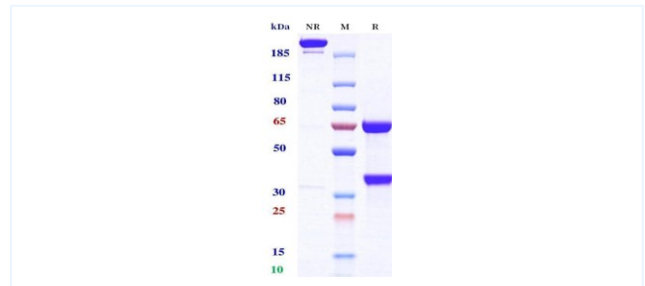
# Data

## MASS



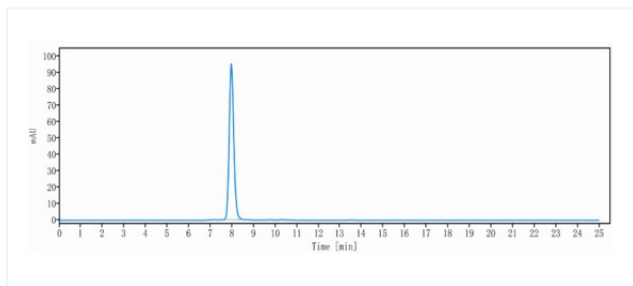
The detected weight of Anti-TNFAlpha & IL-17 Reference Antibody (Remtolumab) is 198.49 kDa.

## Purity: SDS-PAGE



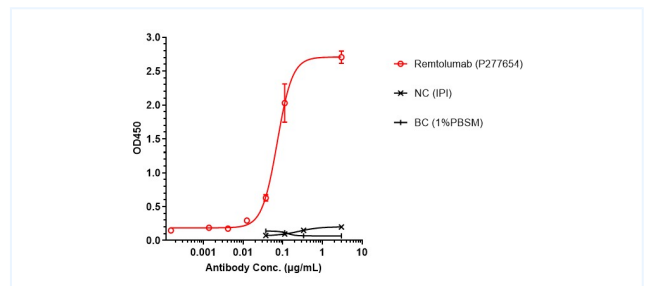
Anti-TNFAlpha & IL-17 Reference Antibody (Remtolumab) on SDS-PAGE under reducing (R) condition. The purity of the protein is greater than 95%.

## Purity: SEC-HPLC



The purity of Anti-TNFAlpha & IL-17 Reference Antibody (Remtolumab) is 100.00%, determined by SEC-HPLC.

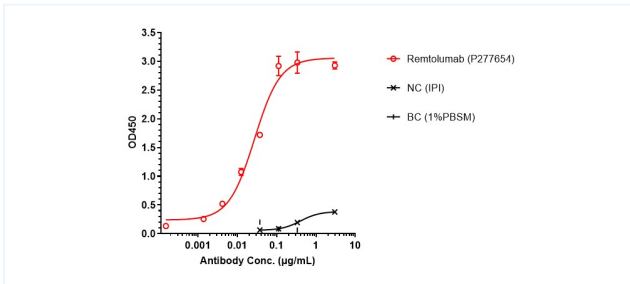
## Bioactivity: ELISA



Remtolumab bound to IL-17a protein, and then rebounded to secondary antibodies (human-IgG-Fc-HRP), and read OD450. As shown in fig, Remtolumab bound to huIL-17a-His, and the EC50 was 0.072 nM.

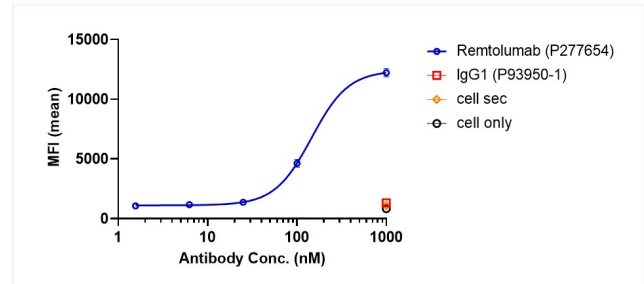
The products are for research use only. Not for use in diagnostic procedures.

## ELISA



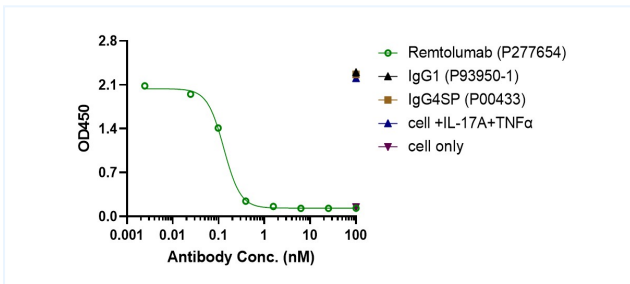
Remtolumab bound to TNF $\alpha$  protein, and then rebounded to secondary antibodies (Anti-human- $\kappa$ + $\lambda$ -HRP), and read OD450. As shown in fig, Remtolumab bound to hu-TNF $\alpha$ -Fc, and the EC50 was 0.027 nM.

## Bioactivity: FACS



Remtolumab bound to huTNF $\alpha$ -CHO-K cells, and then rebounded to fluorescent secondary antibodies (Anti-human IgG, Fcy PE), and test by flow cytometry. As shown in fig, Remtolumab bound to huTNF $\alpha$ -CHO-K cells, and the EC50 was 148.700 nM.

## Function: Luciferase



Co-incubation of NHDF cells with TNF- $\alpha$  and IL-17A protein, then with the addition of Remtolumab and incubated for 24 hours. IL-6 was measured by ELISA. As shown in fig, Remtolumab can neutralize IL17-A-induced IL-6 factor secretion, and the IC50 was 0.130 nM.

The products are for research use only. Not for use in diagnostic procedures.