



CERTIFICATE OF ANALYSIS

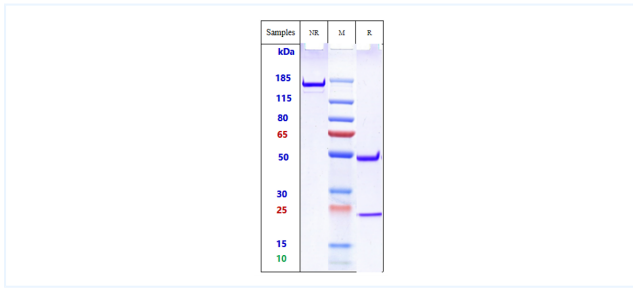


Product Details

Product name:	Anti-TREM2 Reference Antibody (PY314)	Lot.No.:	P53020
Target:	TREM2	Catalog:	CHB356
Target Accession:	Q9NZC2	Concentration :	1 mg/mL
Clonality:	Monoclonal	Isotype:	IgG1
Reactivity:	Human, Mouse, Cynomolgus / Rhesus Macaque	Molecular Weight (kDa) :	145.4 kDa
Application:	Kinetics (SPR), ELISA, Bioactivity: FACS, Functional assay, Research in vivo	Endotoxin:	<1 EU/mg
Formulation:	Liquid: 100mM Pro-Ac, 20mM Arg pH 5.0 Lyophilization: 25mM histidine, 8% sucrose, 0.01% Tween80 pH6.2	Conjugation:	Unconjugated
Reconstitution:	For Powder, reconstitute with sterile, distilled water to a final concentration of 1 mg/ml. Gently shake to solubilize completely. Do not vortex.	Expression System:	CHO
Storage:	-80°C for 2 years under sterile conditions; -20°C for 1 year under sterile conditions; Avoid repeated freeze-thaw cycles.	Purification:	Protein A

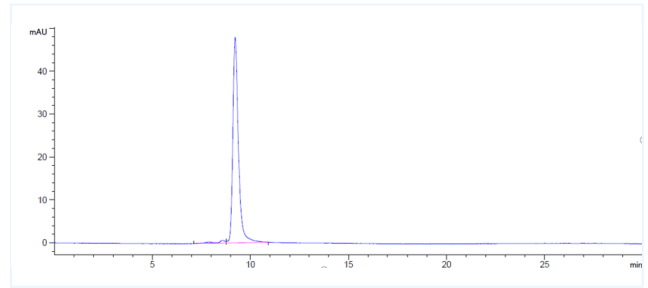
Data

Purity: SDS-PAGE



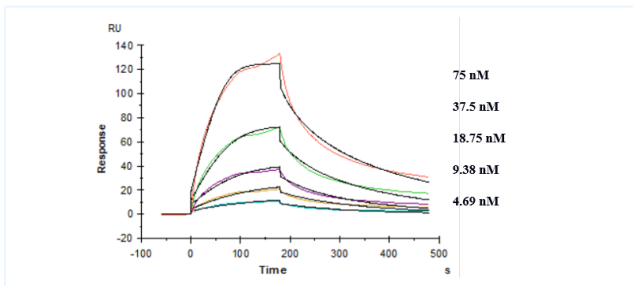
Anti-TREM2 Reference Antibody (Py314) on SDS-PAGE under reducing (R) condition. The purity of the protein is greater than 95%.

Purity: SEC-HPLC



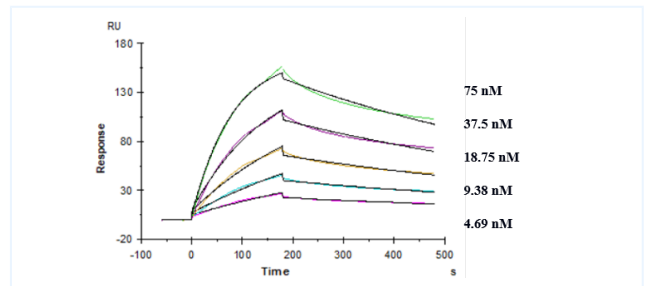
The purity of Anti-TREM2 Reference Antibody (Py314) is 97.69%, determined by SEC-HPLC.

Kinetics (SPR)



Affinity constant of $1.61E-08$ M as determined in SPR assay. (Human TREM2, His Tag)

Kinetics (SPR)



Affinity constant of $7.77E-09$ M as determined in SPR assay. (Mouse TREM2, His Tag)

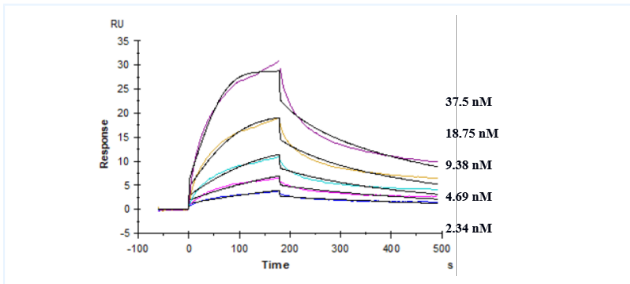
The products are for research use only. Not for use in diagnostic procedures.



CERTIFICATE OF ANALYSIS

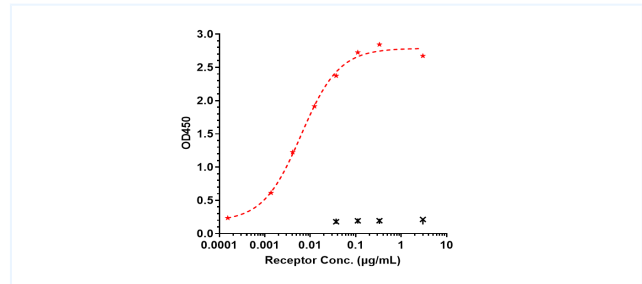


Kinetics (SPR)



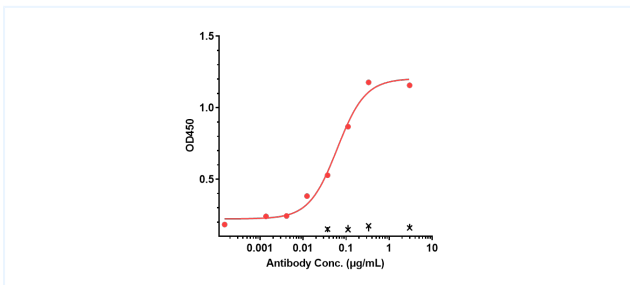
Affinity constant of 4.56×10^{-9} M as determined in SPR assay. (Cynomolgus / Rhesus Macaque TREM2, His Tag)

Bioactivity: ELISA



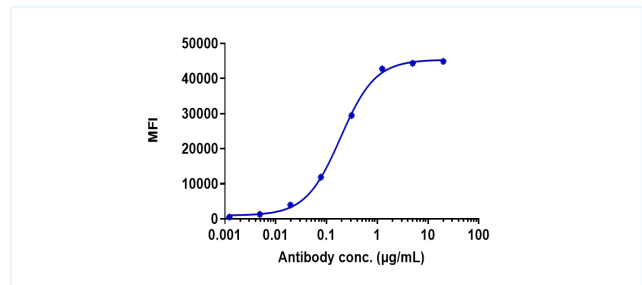
Immobilized Ma TREM2 His at 2 µg/mL can bind Anti-TREM2 Reference Antibody (Py314), $EC_{50}=0.0063$ µg/mL.

ELISA



Immobilized Human TREM2 His at 2 µg/mL can bind Anti-TREM2 Reference Antibody (Py314), $EC_{50}=0.06212$ µg/mL.

Bioactivity: FACS



Human TREM2 CHO-K1 cells were stained with Anti-TREM2 Reference Antibody (Py314) and negative control protein respectively, washed and then followed by PE and analyzed with FACS, $EC_{50}=0.1896$ µg/mL.

The products are for research use only. Not for use in diagnostic procedures.