



CERTIFICATE OF ANALYSIS

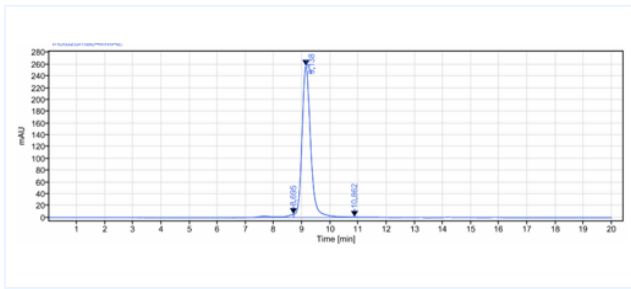


Product Details

Product name:	Anti-Siglec-2 / CD22 Reference Antibody (inotuzumab-MMAE)	Lot.No.:	P95903
Target:	Siglec-2 / CD22	Catalog:	CHB301
Target Accession:	P20273	Concentration :	1 mg/mL
Clonality:	Monoclonal-ADC	Isotype:	IgG4
Reactivity:	Human	Molecular Weight (kDa) :	145 kDa
Application:	Kinetics (SPR), ELISA, Bioactivity: FACS, Functional assay, Research in vivo	Endotoxin:	<1 EU/mg
Formulation:	Liquid: 100mM Pro-Ac, 20mM Arg pH 5.0 Lyophilization: 25mM histidine, 8% sucrose, 0.01% Tween80 pH6.2	Conjugation:	Unconjugated
Reconstitution:	For Powder, reconstitute with sterile, distilled water to a final concentration of 1 mg/ml. Gently shake to solubilize completely. Do not vortex.	Expression System:	CHO
Storage:	Upon receipt, store immediately at -20°C or lower for 24 months. Store aliquots at -80°C for up to 3 months. Avoid repeated freeze-thaw cycles.	Purification:	Protein A

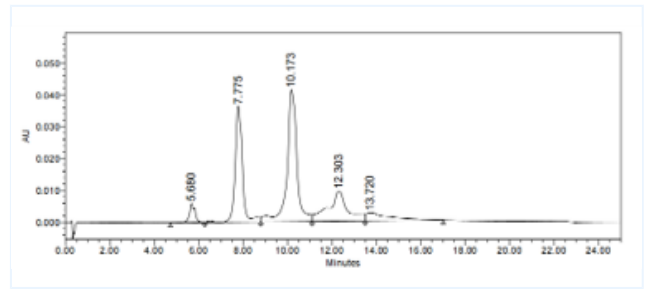
Data

Purity: SEC-HPLC



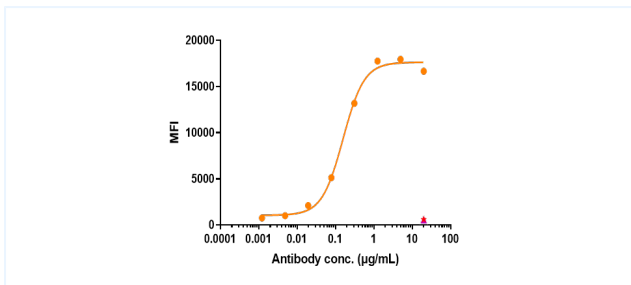
The purity of Anti-Siglec-2 / CD22 Reference Antibody (inotuzumab-MMAE) is more than 95%, determined by SEC-HPLC.

HIC-HPLC



The drug-to-antibody ratio (DAR) of the Anti-Siglec-2 / CD22 Reference Antibody (inotuzumab-MMAE) is 4.0.

Bioactivity: FACS



Human Siglec-2 / CD22 HEK293 Cell Line were stained with Anti-Siglec-2 / CD22 Reference Antibody (inotuzumab-MMAE) and negative control protein respectively, washed and then followed by PE and analyzed with FACS, The EC50 is 0.16 µg/mL.

The products are for research use only. Not for use in diagnostic procedures.