



CERTIFICATE OF ANALYSIS

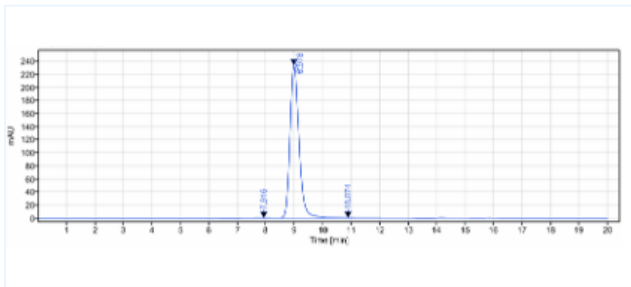


Product Details

Product name:	Anti-ERBB1 / EGFR / HER1 Reference Antibody (Cetuximab-MMAE)	Lot.No.:	P95904
Target:	ERBB1 / EGFR / HER1	Catalog:	CHB299
Target Accession:	P00533	Concentration :	6.98 mg/mL
Clonality:	Monoclonal-ADC	Isotype:	IgG1
Reactivity:	Human	Molecular Weight (kDa) :	150 kDa
Application:	Kinetics (SPR), ELISA, Bioactivity: FACS, Functional assay, Research in vivo	Endotoxin:	<1 EU/mg
Formulation:	Liquid: 100mM Pro-Ac, 20mM Arg pH 5.0 Lyophilization: 25mM histidine, 8% sucrose, 0.01% Tween80 pH6.2	Conjugation:	MMAE
Reconstitution:	For Powder, reconstitute with sterile, distilled water to a final concentration of 1 mg/ml. Gently shake to solubilize completely. Do not vortex.	Expression System:	CHO
Storage:	Upon receipt, store immediately at -20°C or lower for 24 months. Store aliquots at -80°C for up to 3 months. Avoid repeated freeze-thaw cycles.	Purification:	Protein A

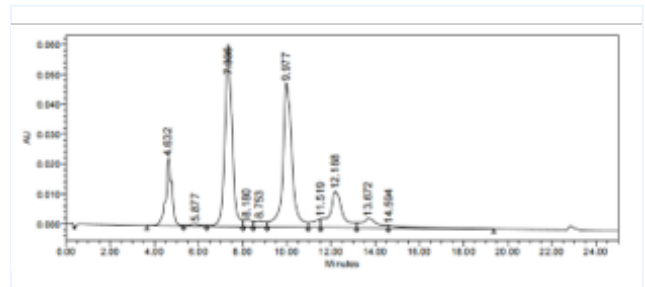
Data

Purity: SEC-HPLC



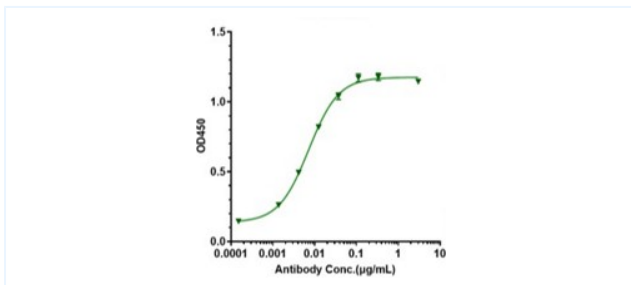
The purity of Anti-ERBB1 / EGFR / HER1 Reference Antibody (Cetuximab-MMAE) is 95%, determined by SEC-HPLC.

HIC-HPLC



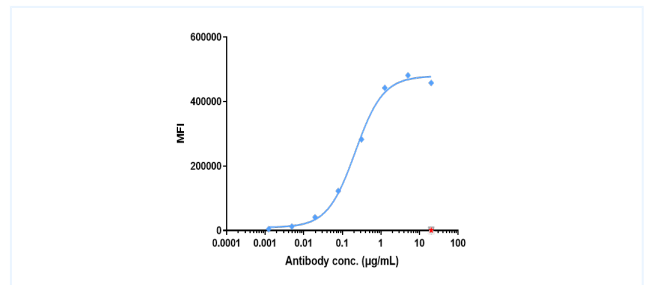
The drug-to-antibody ratio (DAR) of the Anti-ERBB1 / EGFR / HER1 Reference Antibody (Cetuximab-MMAE) is 3.7.

ELISA



Immobilized Human ERBB1/EGFR/HER1, His Tag at 2 µg/mL (30 µL/well) can bind Cetuximab-MMAE (P215672D3.7) with the EC50 of 0.007140 µg/mL.

Bioactivity: FACS



Human ERBB1 / EGFR / HER1 CT26 Cell Line were stained Anti-ERBB1 / EGFR / HER1 Reference Antibody (Cetuximab-MMAE) and negative control protein respectively, washed and then followed by PE and analyzed with FACS, The EC50 is 0.22 µg/mL.

The products are for research use only. Not for use in diagnostic procedures.