



CERTIFICATE OF ANALYSIS

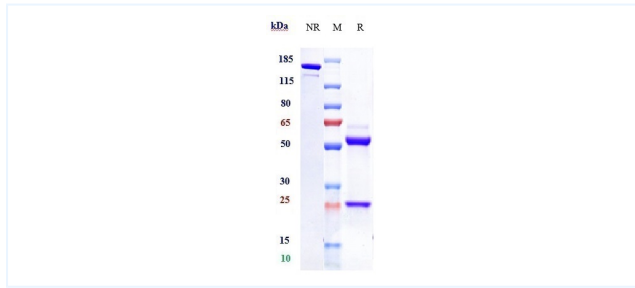


Product Details

Product name:	Anti-TROP2 Reference Antibody (Sacituzumab-MMAE)	Lot.No.:	P30481
Target:	TROP2	Catalog:	CHB295
Target Accession:	P09758	Concentration :	1 mg/mL
Clonality:	Monoclonal-ADC	Isotype:	IgG1
Reactivity:	Human	Molecular Weight (kDa) :	150 kDa
Application:	Kinetics (SPR), ELISA, Bioactivity: FACS, Functional assay, Research in vivo	Endotoxin:	<1 EU/mg
Formulation:	Liquid: 100mM Pro-Ac, 20mM Arg pH 5.0 Lyophilization: 25mM histidine, 8% sucrose, 0.01% Tween80 pH6.2	Conjugation:	MMAE
Reconstitution:	For Powder, reconstitute with sterile, distilled water to a final concentration of 1 mg/ml. Gently shake to solubilize completely. Do not vortex.	Expression System:	CHO
Storage:	Upon receipt, store immediately at -20°C or lower for 24 months. Store aliquots at -80°C for up to 3 months. Avoid repeated freeze-thaw cycles.	Purification:	Protein A

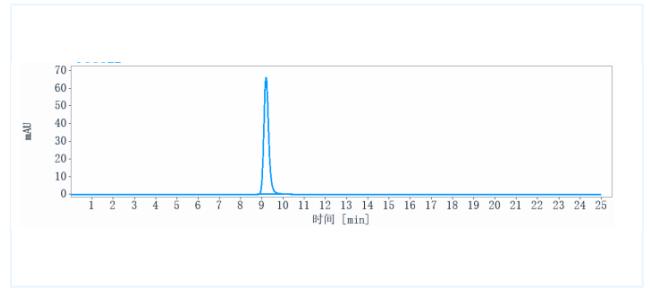
Data

Purity: SDS-PAGE



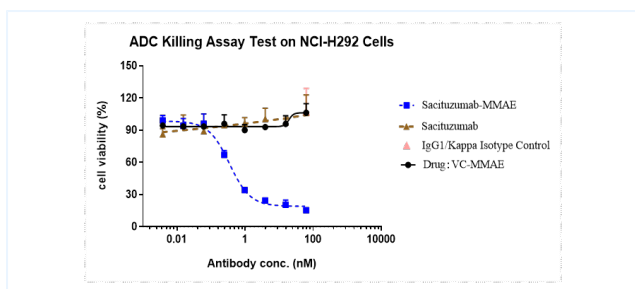
Anti-TROP2 Reference Antibody (Sacituzumab-MMAE) on SDS-PAGE under reducing (R) condition. The purity of the protein is greater than 90%.

Purity: SEC-HPLC



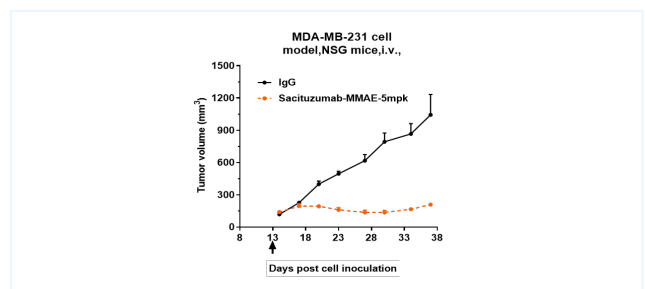
The purity of Anti-TROP2 Reference Antibody (Sacituzumab-MMAE) is more than 95%, determined by SEC-HPLC.

Function: Cytotoxicity



Killing assay test on NCL-H292 Cells, the maximum kill rate of anti-TROP2 Reference Antibody (Sacituzumab MMAE) is about 100%.

Research in vivo



Sacituzumab-ADC inhibited the tumor growth of MDA-MB-231 on NSG mice. The result showed significant anti-tumor effects, with a tumor inhibition rate (TGI) of 80.0% at 5 mpk at D37.

The products are for research use only. Not for use in diagnostic procedures.