



# CERTIFICATE OF ANALYSIS

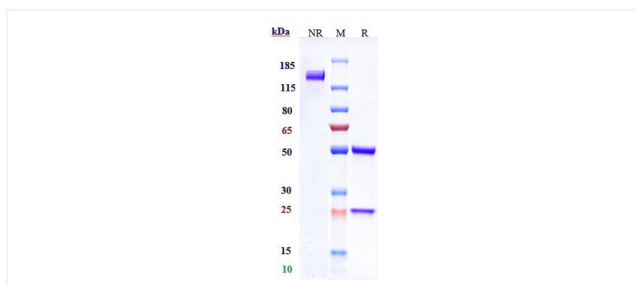


## Product Details

Product name:	Anti-Siglec-2 / CD22 Reference Antibody (Pinatuzumab vedotin)	Lot.No.:	P92652
Target:	Siglec-2 / CD22	Catalog:	CHB265
Target Accession:	P20273	Concentration :	11.65 mg/mL
Clonality:	Monoclonal-ADC	Isotype:	IgG1
Reactivity:	Human	Molecular Weight (kDa) :	151.97 kDa
Application:	Kinetics (SPR), ELISA, Bioactivity: FACS, Functional assay, Research in vivo	Endotoxin:	<1 EU/mg
Formulation:	Liquid: 100mM Pro-Ac, 20mM Arg pH 5.0   Lyophilization: 25mM histidine, 8% sucrose, 0.01% Tween80 pH6.2	Conjugation:	MMAE
Reconstitution:	For Powder, reconstitute with sterile, distilled water to a final concentration of 1 mg/ml. Gently shake to solubilize completely. Do not vortex.	Expression System:	CHO
Storage:	Upon receipt, store immediately at -20°C or lower for 24 months. Store aliquots at -80°C for up to 3 months. Avoid repeated freeze-thaw cycles.	Purification:	Protein A

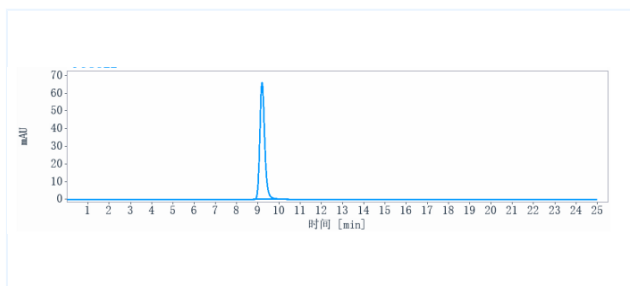
# Data

## Purity: SDS-PAGE



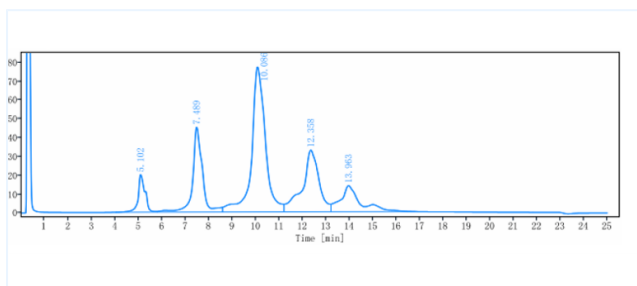
Anti-Siglec-2 / CD22 Reference Antibody (pinatuzumab vedotin) on SDS-PAGE under reducing (R) condition. The purity of the protein is greater than 90%.

## Purity: SEC-HPLC



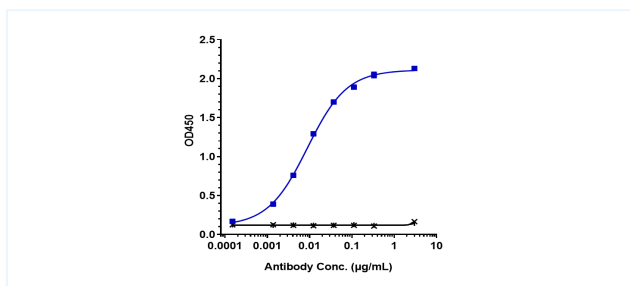
The purity of Anti-Siglec-2 / CD22 Reference Antibody (pinatuzumab vedotin) is more than 95%, determined by SEC-HPLC.

## HIC-HPLC



The drug-to-antibody ratio (DAR) of the Anti-Siglec-2 / CD22 Reference Antibody (Pinatuzumab vedotin) is 4.3.

## Bioactivity: ELISA



Immobilized human Siglec 2 / CD22, His Tag at 2 µg/mL can bind Anti-Siglec-2 / CD22 Reference Antibody (Pinatuzumab vedotin), EC50=0.008851 µg/mL.

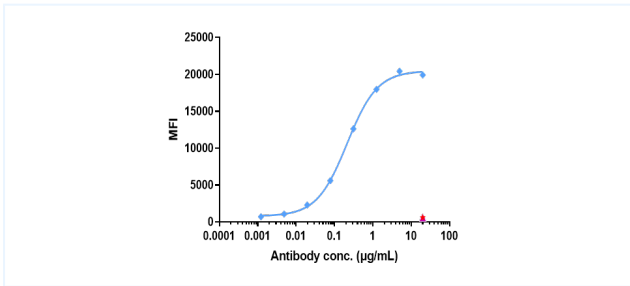
The products are for research use only. Not for use in diagnostic procedures.



# CERTIFICATE OF ANALYSIS



## Bioactivity: FACS



Human Siglec-2 / CD22 HEK293 Cell Line were stained with Anti-Siglec-2 / CD22 Reference Antibody (Pinatuzumab vedotin) and negative control protein respectively, washed and then followed by PE and analyzed with FACS, The EC50 is 0.21 µg/mL.

The products are for research use only. Not for use in diagnostic procedures.