



# CERTIFICATE OF ANALYSIS

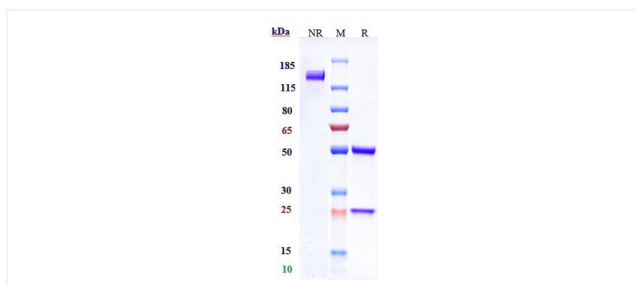


## Product Details

Product name:	Anti-NaPi2b / SLC34A2 Reference Antibody (Lifastuzumab vedotin)	Lot.No.:	P108229D3.7
Target:	NaPi2b / SLC34A2	Catalog:	CHB263
Target Accession:	O95436	Concentration :	8.79 mg/mL
Clonality:	Monoclonal-ADC	Isotype:	IgG1
Reactivity:	Human	Molecular Weight (kDa) :	145 kDa
Application:	Kinetics (SPR), ELISA, Bioactivity: FACS, Functional assay, Research in vivo	Endotoxin:	<1 EU/mg
Formulation:	Liquid: 100mM Pro-Ac, 20mM Arg pH 5.0 Lyophilization: 25mM histidine, 8% sucrose, 0.01% Tween80 pH6.2	Conjugation:	MMAE
Reconstitution:	For Powder, reconstitute with sterile, distilled water to a final concentration of 1 mg/ml. Gently shake to solubilize completely. Do not vortex.	Expression System:	CHO
Storage:	Upon receipt, store immediately at -20°C or lower for 24 months. Store aliquots at -80°C for up to 3 months. Avoid repeated freeze-thaw cycles.	Purification:	Protein A

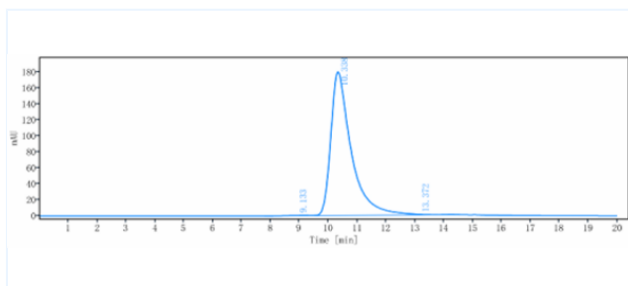
# Data

## Purity: SDS-PAGE



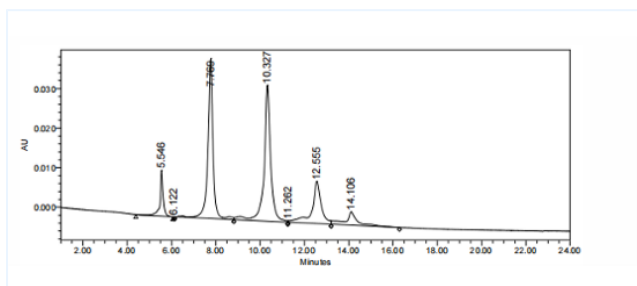
Anti-NaPi2b / SLC34A2 Reference Antibody (Lifastuzumab vedotin) on SDS-PAGE under reducing (R) condition. The purity of the protein is greater than 95%.

## Purity: SEC-HPLC



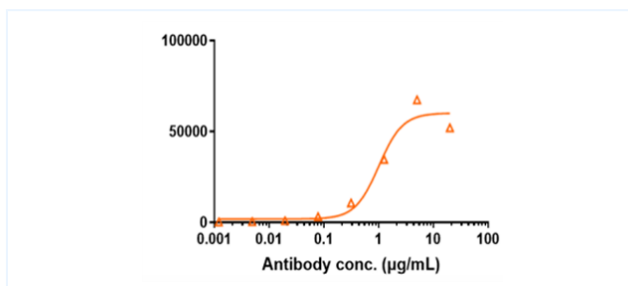
The purity of Anti-NaPi2b / SLC34A2 Reference Antibody (Lifastuzumab vedotin) is more than 95%, determined by SEC-HPLC.

## HIC-HPLC



The drug-to-antibody ratio (DAR) of the Anti-NaPi2b / SLC34A2 Reference Antibody (Lifastuzumab vedotin) is 3.7.

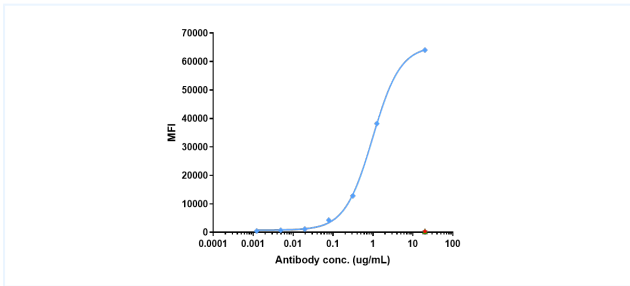
## ELISA



Human NaPi2b CHO-S Cells were stained with Anti-NaPi2b / SLC34A2 Reference Antibody (Lifastuzumab vedotin) and negative control protein respectively, washed and then followed by PE and analyzed with FACS

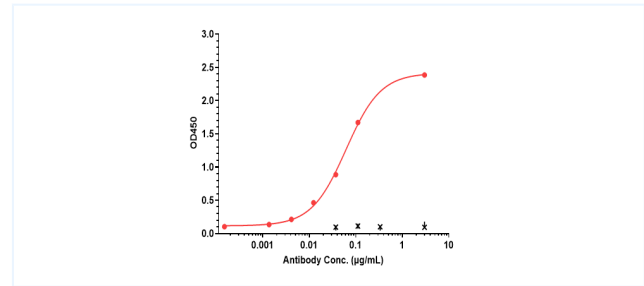
The products are for research use only. Not for use in diagnostic procedures.

## Bioactivity: FACS



Human NaPi2b HEK293 Cell Line were stained with Anti-NaPi2b / SLC34A2 Reference Antibody (lifastuzumab vedotin) and negative control protein respectively, washed and then followed by PE and analyzed with FACS, The EC50 is 0.9793  $\mu\text{g/mL}$ .

## ELISA



Immobilized Human NaPi2b / SLC34A2, VLP at 5  $\mu\text{g/mL}$  can bind Anti-NaPi2b / SLC34A2 Reference Antibody (Lifastuzumab vedotin), EC50=0.06175  $\mu\text{g/mL}$ .

The products are for research use only. Not for use in diagnostic procedures.