



# CERTIFICATE OF ANALYSIS

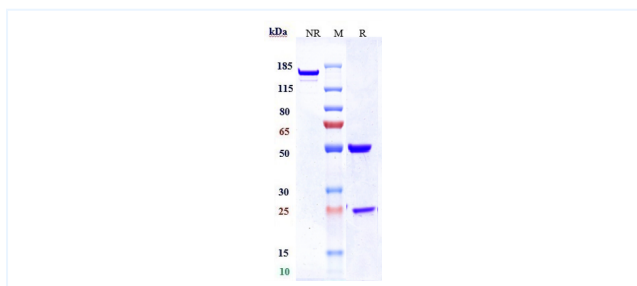


## Product Details

Product name:	Anti-TNFRSF8 / CD30 Reference Antibody (brentuximab vedotin)	Lot.No.:	P97849
Target:	TNFRSF8 / CD30	Catalog:	CHB252
Target Accession:	P28908	Concentration :	9.36 mg/mL
Clonality:	Monoclonal-ADC	Isotype:	IgG1
Reactivity:	Human	Molecular Weight (kDa) :	145.48 kDa
Application:	Kinetics (SPR), ELISA, Bioactivity: FACS, Functional assay, Research in vivo	Endotoxin:	<1 EU/mg
Formulation:	Liquid: 100mM Pro-Ac, 20mM Arg pH 5.0   Lyophilization: 25mM histidine, 8% sucrose, 0.01% Tween80 pH6.2	Conjugation:	MMAE
Reconstitution:	For Powder, reconstitute with sterile, distilled water to a final concentration of 1 mg/ml. Gently shake to solubilize completely. Do not vortex.	Expression System:	CHO
Storage:	Upon receipt, store immediately at -20°C or lower for 24 months. Store aliquots at -80°C for up to 3 months. Avoid repeated freeze-thaw cycles.	Purification:	Protein A

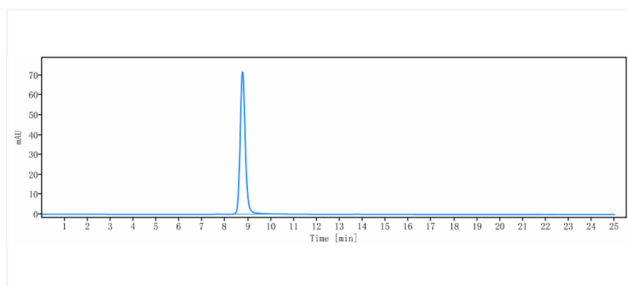
# Data

## Purity: SDS-PAGE



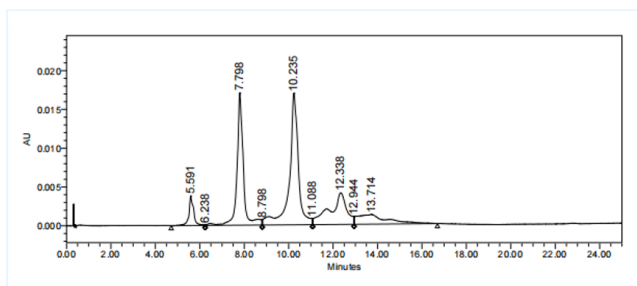
Anti-TNFRSF8 / CD30 Reference Antibody (brentuximab vedotin) on SDS-PAGE under reducing (R) condition. The purity of the protein is greater than 95%.

## Purity: SEC-HPLC



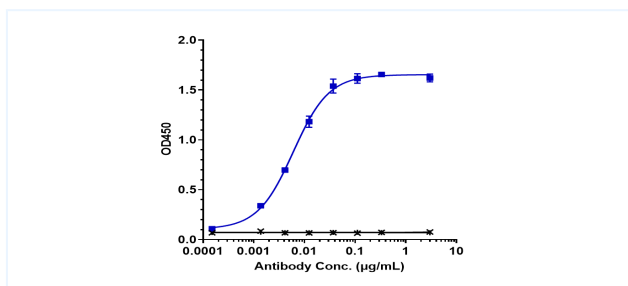
The purity of Anti-TNFRSF8 / CD30 Reference Antibody (brentuximab vedotin) is 98.99%, determined by SEC-HPLC.

## HIC



MMAE is conjugated by sulfhydryl coupling, the DAR value of Anti-TNFRSF8 / CD30 Reference Antibody (brentuximab vedotin) antibody is 4.0.

## Bioactivity: ELISA



Immobilized human CD30 His at 2 µg/mL can bind Anti-TNFRSF8 / CD30 Reference Antibody (brentuximab vedotin), EC50 is 0.006007 µg/mL.

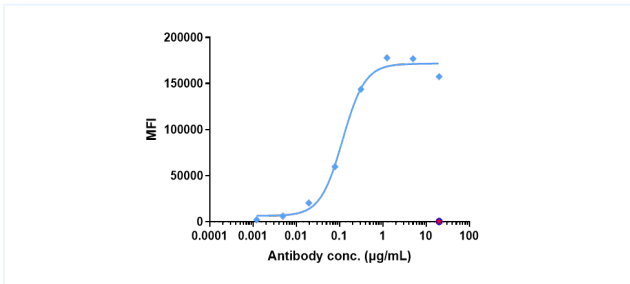
The products are for research use only. Not for use in diagnostic procedures.



# CERTIFICATE OF ANALYSIS



## Bioactivity: FACS



Human TNFRSF8 / CD30 EGFP CHO Cell Line were stained with Anti-TNFRSF8 / CD30 Reference Antibody (brentuximab vedotin) and negative control protein respectively, washed and then followed by PE and analyzed with FACS, The EC50 is 0.12 µg/mL.

The products are for research use only. Not for use in diagnostic procedures.