



CERTIFICATE OF ANALYSIS

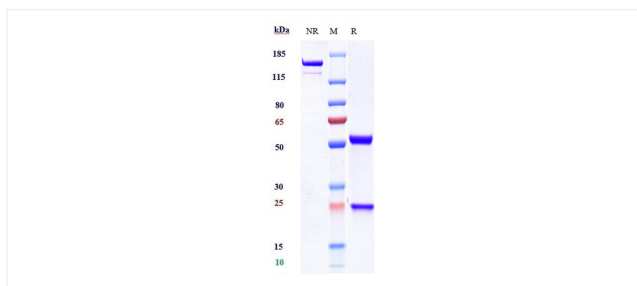


Product Details

Product name:	Anti-GPC3 / Glypican-3 Reference Antibody (Codrituzumab-MMAE)	Lot.No.:	P100706D3.7
Target:	GPC3 / Glypican-3	Catalog:	CHB224
Target Accession:	P51654	Concentration :	1 mg/mL
Clonality:	Monoclonal	Isotype:	IgG1
Reactivity:	Human	Molecular Weight (kDa) :	150.85 kDa
Application:	Kinetics (SPR), ELISA, Bioactivity: FACS, Functional assay, Research in vivo	Endotoxin:	<1 EU/mg
Formulation:	Liquid: 100mM Pro-Ac, 20mM Arg pH 5.0 Lyophilization: 25mM histidine, 8% sucrose, 0.01% Tween80 pH6.2	Conjugation:	MMAE
Reconstitution:	For Powder, reconstitute with sterile, distilled water to a final concentration of 1 mg/ml. Gently shake to solubilize completely. Do not vortex.	Expression System:	CHO
Storage:	Upon receipt, store immediately at -20°C or lower for 24 months. Store aliquots at -80°C for up to 3 months. Avoid repeated freeze-thaw cycles.	Purification:	Protein A

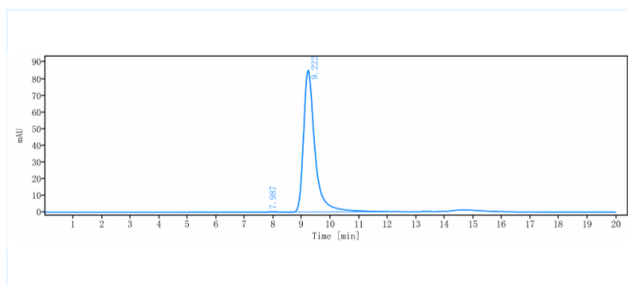
Data

Purity: SDS-PAGE



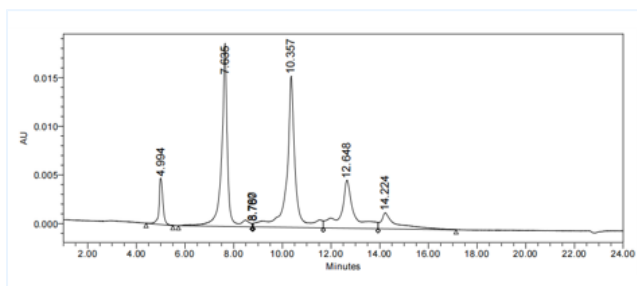
Anti-GPC3 / Glypican-3 Reference Antibody (Codrituzumab-MMAE) on SDS-PAGE under reducing (R) condition. The purity of the protein is greater than 90%.

Purity: SEC-HPLC



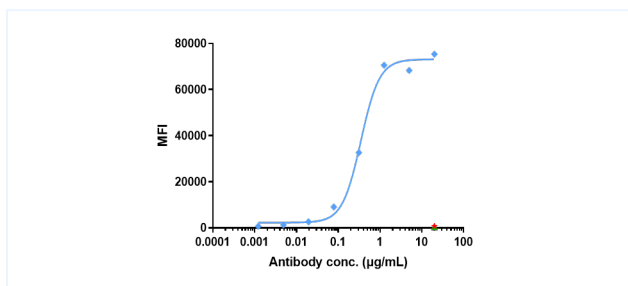
The purity of Anti-GPC3 / Glypican-3 Reference Antibody (Codrituzumab-MMAE) is 99.73%, determined by SEC-HPLC.

HIC



MMAE is conjugated by sulfhydryl coupling, the DAR value of Anti TROP2 Reference Antibody (Sacituzumab govitecan) antibody is 3.8.

Bioactivity: FACS



Human GPC3 / Glypican-3 HEK293 Cell Line were stained Anti-GPC3 / Glypican-3 Reference Antibody (Codrituzumab-MMAE) and negative control protein respectively, washed and then followed by PE and analyzed with FACS, The EC50 is 0.35 ug/mL.

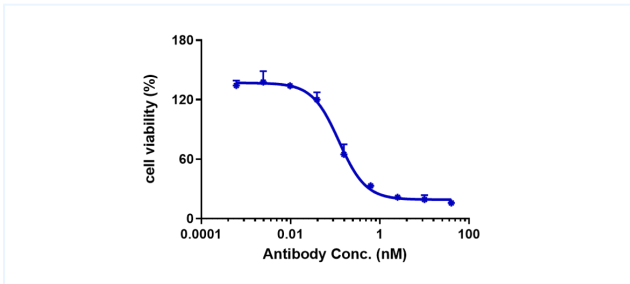
The products are for research use only. Not for use in diagnostic procedures.



CERTIFICATE OF ANALYSIS



Function: Cytotoxicity



The killing ratio Codrituzumab-MMAE by HuH-7 increased with the increase of antibody concentration, and the killing Rate (%) reached 130% at antibody concentration of 40 nM.

The products are for research use only. Not for use in diagnostic procedures.