



CERTIFICATE OF ANALYSIS

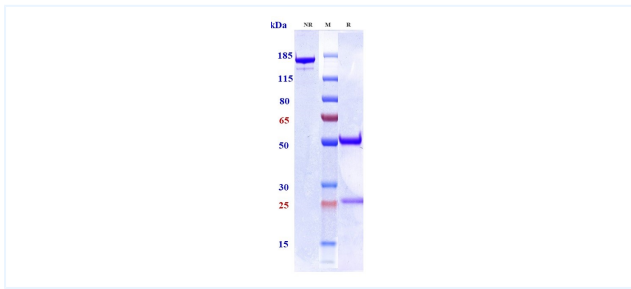


Product Details

Product name:	Anti-CSF2 / GM-CSF Reference Antibody (Theraclone patent anti-GM-CSF)	Lot.No.:	P57131
Target:	CSF2 / GM-CSF	Catalog:	CHB132
Target Accession:	P04141	Concentration :	0.22 mg/mL
Clonality:	Monoclonal	Isotype:	IgG1
Reactivity:	Human	Molecular Weight (kDa) :	145.02 kDa
Application:	Kinetics (SPR), ELISA, Bioactivity: FACS, Functional assay, Research in vivo	Endotoxin:	<1 EU/mg
Formulation:	Liquid: 100mM Pro-Ac, 20mM Arg pH 5.0 Lyophilization: 25mM histidine, 8% sucrose, 0.01% Tween80 pH6.2	Conjugation:	Unconjugated
Reconstitution:	For Powder, reconstitute with sterile, distilled water to a final concentration of 1 mg/ml. Gently shake to solubilize completely. Do not vortex.	Expression System:	CHO
Storage:	-80°C for 2 years under sterile conditions; -20°C for 1 year under sterile conditions; Avoid repeated freeze-thaw cycles.	Purification:	Protein A

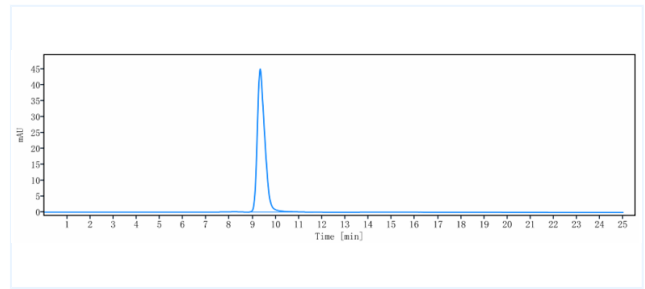
Data

Purity: SDS-PAGE



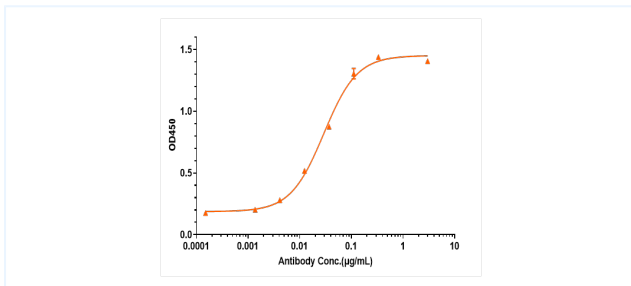
Anti-CSF2 / GM-CSF Reference Antibody (Theraclone patent anti-GM-CSF) on SDS-PAGE under reducing (R) condition. The purity of the protein is greater than 95%.

Purity: SEC-HPLC



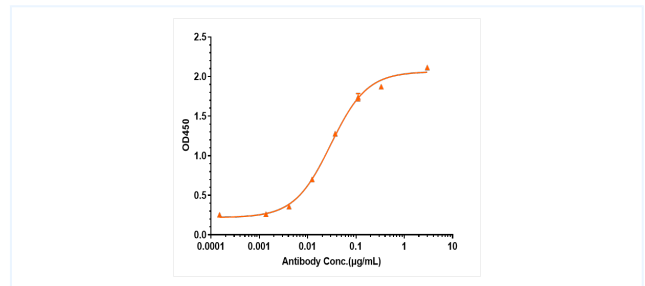
The purity of Anti-CSF2 / GM-CSF Reference Antibody (Theraclone patent anti-GM-CSF) is more than 95%, determined by SEC-HPLC.

ELISA



Immobilized Human CSF2 / GM-CSF, Fc Tag at 2 µg/mL can bind Anti-CSF2 / GM-CSF Reference Antibody (Theraclone patent anti-GM-CSF), The EC50 was approximately 0.02924 µg/mL.

ELISA



Immobilized Cynomolgus / Rhesus Macaque CSF2 / GM-CSF, Fc Tag at 2 µg/mL can bind Anti-CSF2 / GM-CSF Reference Antibody (Theraclone patent anti-GM-CSF), The EC50 was approximately 0.03002 µg/mL.

The products are for research use only. Not for use in diagnostic procedures.