



CERTIFICATE OF ANALYSIS

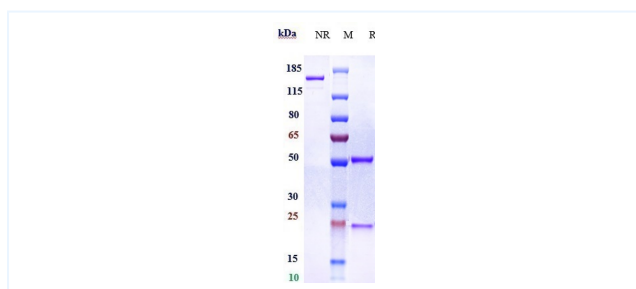


Product Details

| | | | |
|----------------------|---|-----------------------------|--------------|
| Product name: | Anti-Siglec-15 / CD33L3 Reference Antibody (AB-25E9) | Lot.No.: | NA |
| Target: | Siglec-15 / CD33L3 | Catalog: | CHB093 |
| Target Accession: | Q6ZMC9 | Concentration : | 1 mg/mL |
| Clonality: | Monoclonal | Isotype: | IgG1 |
| Reactivity: | Human | Molecular Weight (kDa) : | 150 kDa |
| Application: | Kinetics (SPR), ELISA, Bioactivity: FACS, Functional assay, Research in vivo | Endotoxin: | <1 EU/mg |
| Formulation: | Liquid: 100mM Pro-Ac, 20mM Arg pH 5.0 Lyophilization: 25mM histidine, 8% sucrose, 0.01% Tween80 pH6.2 | Conjugation: | Unconjugated |
| Reconstitution: | For Powder, reconstitute with sterile, distilled water to a final concentration of 1 mg/ml. Gently shake to solubilize completely. Do not vortex. | Expression System: | CHO |
| Storage: | -80°C for 2 years under sterile conditions; -20°C for 1 year under sterile conditions; Avoid repeated freeze-thaw cycles. | Purification: | Protein A |

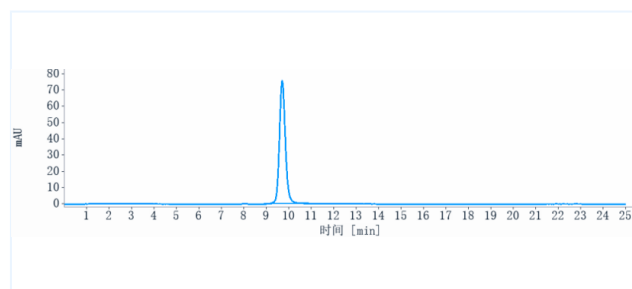
Data

Purity: SDS-PAGE



Anti-Siglec-15 / CD33L3 Reference Antibody (AB-25E9) on SDS-PAGE under reducing (R) condition. The purity of the protein is greater than 90%.

Purity: SEC-HPLC



The purity of Anti-Siglec-15 / CD33L3 Reference Antibody (AB-25E9) is more than 95%, determined by SEC-HPLC.

The products are for research use only. Not for use in diagnostic procedures.