



# CERTIFICATE OF ANALYSIS

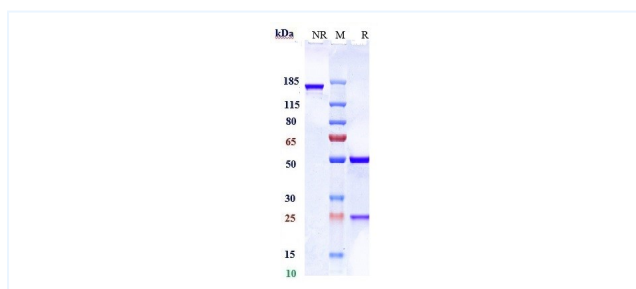


## Product Details

|                      |   |                             |              |
|----------------------|---|-----------------------------|--------------|
| Product name:        | Anti-RHD / CD240d Reference Antibody (LFB Anti-RhD)   | Lot.No.:                    | P104424      |
| Target:              | RHD / CD240d  | Catalog:                    | CHB085       |
| Target<br>Accession: | Q02161  | Concentration :             | 1 mg/mL      |
| Clonality:           | Monoclonal  | Isotype:                    | IgG1         |
| Reactivity:          | Human   | Molecular Weight<br>(kDa) : | 146.4 kDa    |
| Application:         | Kinetics (SPR), ELISA, Bioactivity: FACS, Functional assay,<br>Research in vivo   | Endotoxin:                  | <1 EU/mg     |
| Formulation:         | Liquid: 100mM Pro-Ac, 20mM Arg pH 5.0 <br/><br>Lyophilization: 25mM histidine, 8% sucrose, 0.01% Tween80<br>pH6.2                                       | Conjugation:                | Unconjugated |
| Reconstitution:      | For Powder, reconstitute with sterile, distilled water to a<br>final concentration of 1 mg/ml. Gently shake to solubilize<br>completely. Do not vortex. | Expression System:          | CHO          |
| Storage:             | -80°C for 2 years under sterile conditions; -20°C for 1 year<br>under sterile conditions; Avoid repeated freeze-thaw cycles.                            | Purification:               | Protein A    |

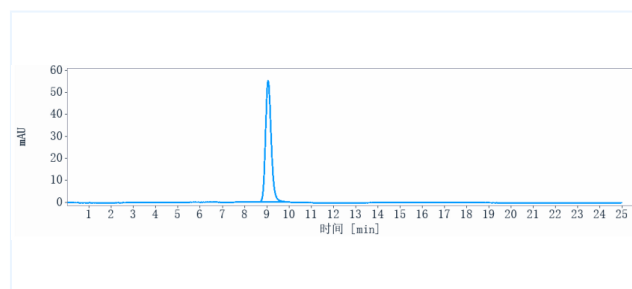
## Data

## Purity: SDS-PAGE



Anti-RHD / CD240d Reference Antibody (LFB Anti-RhD) on SDS-PAGE under reducing (R) condition. The purity of the protein is greater than 95%.

## Purity: SEC-HPLC



The purity of Anti-RHD / CD240d Reference Antibody (LFB Anti-RhD) is 98.9%, determined by SEC-HPLC.

The products are for research use only. Not for use in diagnostic procedures.