



CERTIFICATE OF ANALYSIS



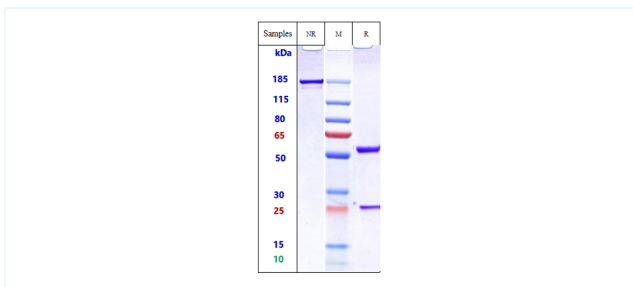
Product Details

Product name:	Anti-IgE Reference Antibody (ligelizumab)	Lot.No.:	NA
Target:	IgE	Catalog:	CHA902
Target Accession:	P0DOX4	Concentration :	1 mg/mL
Clonality:	Monoclonal	Isotype:	IgG1
Reactivity:	Human	Molecular Weight (kDa) :	145.5 kDa
Application:	Kinetics (BLI), Kinetics (SPR), ELISA, Bioactivity: FACS, Functional assay	Endotoxin:	<1 EU/mg
Formulation:	Liquid: 100mM Pro-Ac, 20mM Arg pH 5.0 Lyophilization: 25mM histidine, 8% sucrose, 0.01% Tween80 pH6.2	Conjugation:	None
Reconstitution:	For Powder, reconstitute with sterile, distilled water to a final concentration of 1 mg/ml. Gently shake to solubilize completely. Do not vortex.	Expression System:	CHO
Storage:	-80°C	Purification:	Protein A

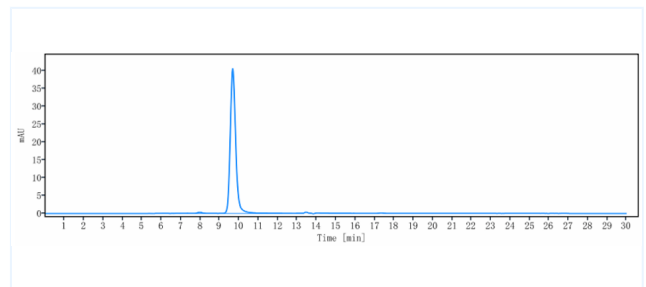
Data

Purity: SDS-PAGE

Purity: SEC-HPLC



Anti-IgE Reference Antibody (ligelizumab) on SDS-PAGE under reducing (R) condition. The purity of the protein is greater than 90%.



The purity of Anti-IgE Reference Antibody (ligelizumab) is more than 95%, determined by SEC-HPLC.

The products are for research use only. Not for use in diagnostic procedures.