



# CERTIFICATE OF ANALYSIS



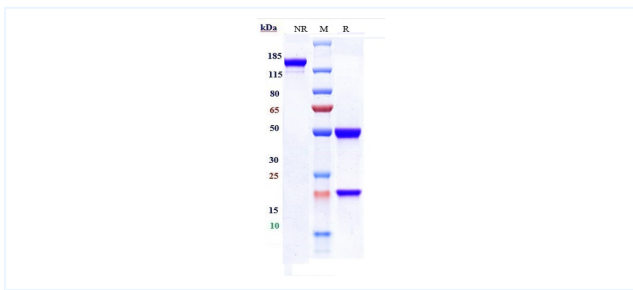
## Product Details

Product name:	Anti-IFN $\gamma$ Reference Antibody (emapalumab)	Lot.No.:	P72057J2
Target:	IFN $\gamma$	Catalog:	CHA900
Target Accession:	P01579	Concentration :	1 mg/mL
Clonality:	Monoclonal	Isotype:	IgG1
Reactivity:	Human, Cynomolgus	Molecular Weight (kDa) :	145.68 kDa
Application:	Kinetics (SPR), ELISA, Bioactivity: FACS, Functional assay, Research in vivo	Endotoxin:	<0.001 EU/ $\mu$ g
Formulation:	Liquid: 100mM Pro-Ac, 20mM Arg pH 5.0 Lyophilization: 25mM histidine, 8% sucrose, 0.01% Tween80 pH6.2	Conjugation:	Unconjugated
Reconstitution:	For Powder, reconstitute with sterile, distilled water to a final concentration of 1 mg/ml. Gently shake to solubilize completely. Do not vortex.	Expression System:	CHO
Storage:	-80°C for 2 years under sterile conditions; -20°C for 1 year under sterile conditions; Avoid repeated freeze-thaw cycles.	Purification:	Protein A

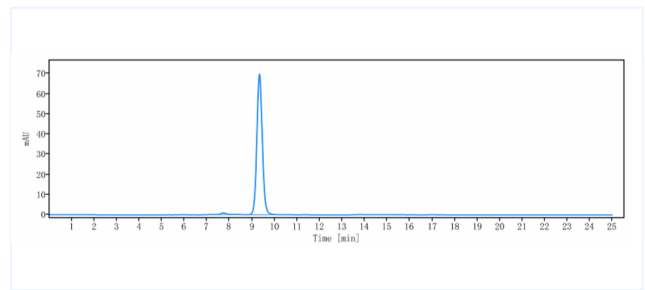
## Data

Purity: SDS-PAGE

Purity: SEC-HPLC

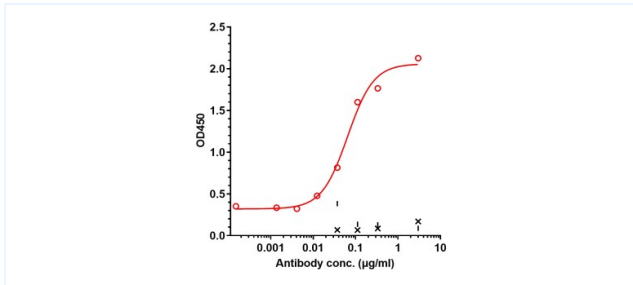


Anti-IFN $\gamma$  Reference Antibody (emapalumab) on SDS-PAGE under reducing (R) condition. The purity of the protein is greater than 95%.



The purity of Anti-IFN $\gamma$  Reference Antibody (emapalumab) is 99%, determined by SEC-HPLC.

### Bioactivity: ELISA



Immobilized IFN $\gamma$  at 2  $\mu\text{g/mL}$  can bind Emapalumab, EC<sub>50</sub>=0.06501  $\mu\text{g/mL}$ .

The products are for research use only. Not for use in diagnostic procedures.