



# CERTIFICATE OF ANALYSIS

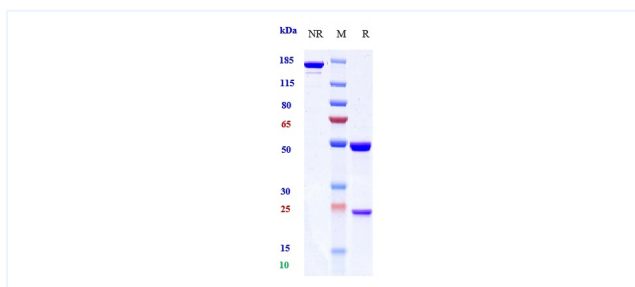


## Product Details

|                   |   |                          |              |
|-------------------|---|--------------------------|--------------|
| Product name:     | Anti-CXCL8 / IL-8 Reference Antibody (Genentech patent anti-IL-8)   | Lot.No.:                 | P56349       |
| Target:           | CXCL8 / IL-8  | Catalog:                 | CHA784       |
| Target Accession: | P10145  | Concentration :          | 1 mg/mL      |
| Clonality:        | Monoclonal  | Isotype:                 | IgG1         |
| Reactivity:       | Human   | Molecular Weight (kDa) : | 145 kDa      |
| Application:      | Kinetics (SPR), ELISA, Bioactivity: FACS, Functional assay, Research in vivo  | Endotoxin:               | <1 EU/mg     |
| Formulation:      | Liquid: 100mM Pro-Ac, 20mM Arg pH 5.0<br>Lyophilization: 25mM histidine, 8% sucrose, 0.01% Tween80 pH6.2  | Conjugation:             | Unconjugated |
| Reconstitution:   | For Powder, reconstitute with sterile, distilled water to a final concentration of 1 mg/ml. Gently shake to solubilize completely. Do not vortex. | Expression System:       | CHO          |
| Storage:          | -80°C for 2 years under sterile conditions; -20°C for 1 year under sterile conditions; Avoid repeated freeze-thaw cycles.                         | Purification:            | Protein A    |

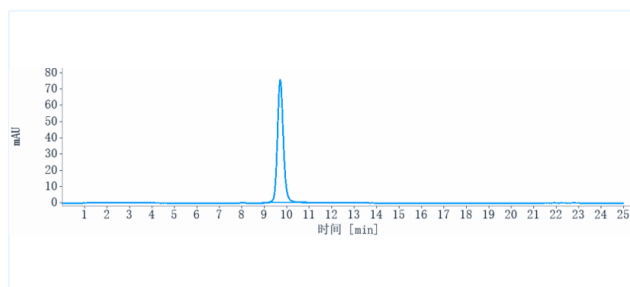
# Data

## Purity: SDS-PAGE



Anti-CXCL8 / IL-8 Reference Antibody (Genentech patent anti-IL-8) on SDS-PAGE under reducing (R) condition. The purity of the protein is greater than 90%.

## Purity: SEC-HPLC



The purity of Anti-CXCL8 / IL-8 Reference Antibody (Genentech patent anti-IL-8) is more than 95%, determined by SEC-HPLC.

The products are for research use only. Not for use in diagnostic procedures.