



# CERTIFICATE OF ANALYSIS

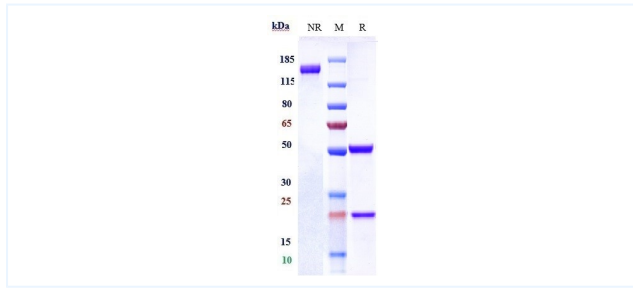


## Product Details

Product name:	Anti-CEACAM6 / CD66c Reference Antibody (tinurilimab)	Lot.No.:	P92742
Target:	CEACAM6 / CD66c	Catalog:	CHA737
Target Accession:	P40199	Concentration :	1 mg/mL
Clonality:	Monoclonal	Isotype:	IgG2SA
Reactivity:	Human	Molecular Weight (kDa) :	144.76 kDa
Application:	Kinetics (SPR), ELISA, Bioactivity: FACS, Functional assay, Research in vivo	Endotoxin:	<1 EU/mg
Formulation:	Liquid: 100mM Pro-Ac, 20mM Arg pH 5.0   Lyophilization: 25mM histidine, 8% sucrose, 0.01% Tween80 pH6.2	Conjugation:	Unconjugated
Reconstitution:	For Powder, reconstitute with sterile, distilled water to a final concentration of 1 mg/ml. Gently shake to solubilize completely. Do not vortex.	Expression System:	CHO
Storage:	-80°C for 2 years under sterile conditions; -20°C for 1 year under sterile conditions; Avoid repeated freeze-thaw cycles.	Purification:	Protein A

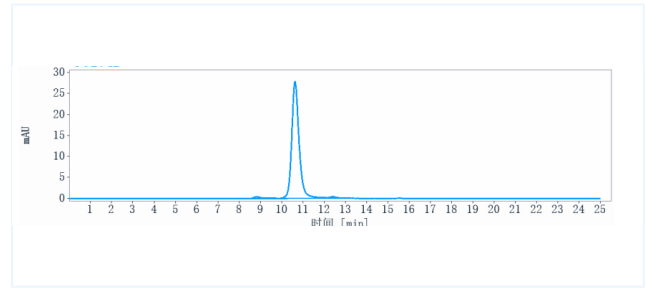
## Data

## Purity: SDS-PAGE



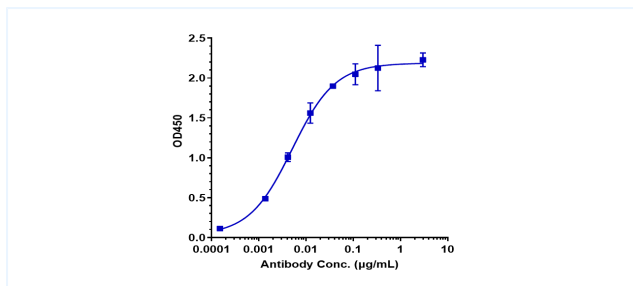
Anti-CEACAM6 / CD66c Reference Antibody (tinurilimab) on SDS-PAGE under reducing (R) condition. The purity of the protein is greater than 95%.

## Purity: SEC-HPLC



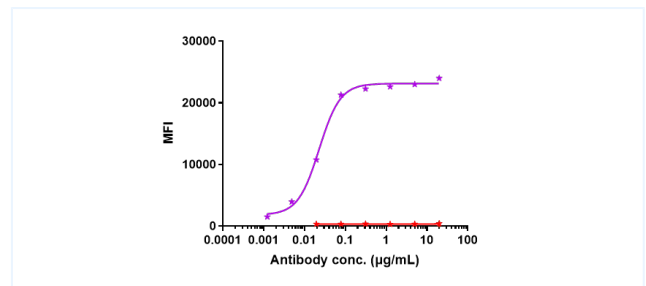
The purity of Anti-CEACAM6 / CD66c Reference Antibody (tinurilimab) is 95.93%, determined by SEC-HPLC.

## Bioactivity: ELISA



Immobilized human CEACAM6 His at 2 µg/mL can bind Anti-CEACAM6 / CD66c Reference Antibody (tinurilimab),  $EC_{50}=0.005084$  µg/mL.

## Bioactivity: FACS



Human CEACAM6 / CD66c EGFP-HEK293 Cell Line were stained with Anti-CEACAM6 / CD66c Reference Antibody (tinurilimab) and negative control protein respectively, washed and then followed by PE and analyzed with FACS, The  $EC_{50}$  is 0.02278 µg/mL.

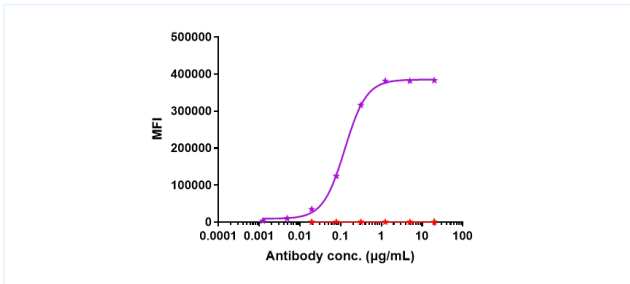
The products are for research use only. Not for use in diagnostic procedures.



# CERTIFICATE OF ANALYSIS

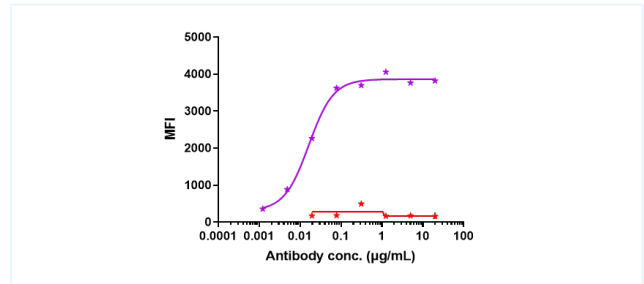


## Bioactivity: FACS



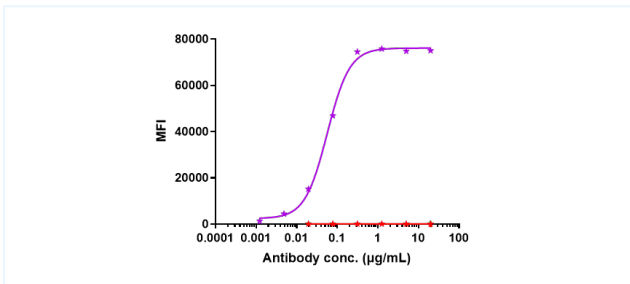
Cynomolgus / Rhesus Macaque CEACAM6 / CD66c EGFP-HEK293 Cell Line were stained with Anti-CEACAM6 / CD66c Reference Antibody (tinurilimab) and negative control protein respectively, washed and then followed by PE and analyzed with FACS, The EC50 is 0.1263 µg/mL.

## Bioactivity: FACS



Human CEACAM6 / CD66c EGFP CHO-S Cell Line were stained with Anti-CEACAM6 / CD66c Reference Antibody (tinurilimab) and negative control protein respectively, washed and then followed by PE and analyzed with FACS, The EC50 is 0.01636 µg/mL.

## Bioactivity: FACS



Cynomolgus / Rhesus Macaque CEACAM6 / CD66c EGFP CHO-S Cell Line were stained with Anti-CEACAM6 / CD66c Reference Antibody (tinurilimab) and negative control protein respectively, washed and then followed by PE and analyzed with FACS, The EC50 is 0.05674 µg/mL.

The products are for research use only. Not for use in diagnostic procedures.