



# CERTIFICATE OF ANALYSIS

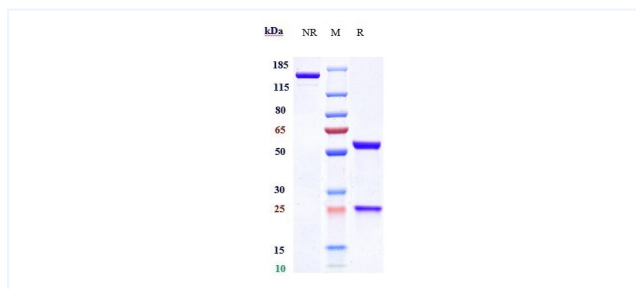


## Product Details

|                      |   |                             |              |
|----------------------|---|-----------------------------|--------------|
| Product name:        | Anti-SOST / Sclerostin Reference Antibody (blosozumab)  | Lot.No.:                    | P214872-C    |
| Target:              | SOST / Sclerostin   | Catalog:                    | CHA635       |
| Target<br>Accession: | Q9BQB4  | Concentration :             | 1 mg/mL      |
| Clonality:           | Monoclonal  | Isotype:                    | IgG4SP       |
| Reactivity:          | Human   | Molecular Weight<br>(kDa) : | 145 kDa      |
| Application:         | Kinetics (SPR), ELISA, Bioactivity: FACS, Functional assay,<br>Research in vivo   | Endotoxin:                  | <1 EU/mg     |
| Formulation:         | Liquid: 100mM Pro-Ac, 20mM Arg pH 5.0 <br/><br>Lyophilization: 25mM histidine, 8% sucrose, 0.01% Tween80<br>pH6.2                                       | Conjugation:                | Unconjugated |
| Reconstitution:      | For Powder, reconstitute with sterile, distilled water to a<br>final concentration of 1 mg/ml. Gently shake to solubilize<br>completely. Do not vortex. | Expression System:          | CHO          |
| Storage:             | -80°C for 2 years under sterile conditions; -20°C for 1 year<br>under sterile conditions; Avoid repeated freeze-thaw cycles.                            | Purification:               | Protein A    |

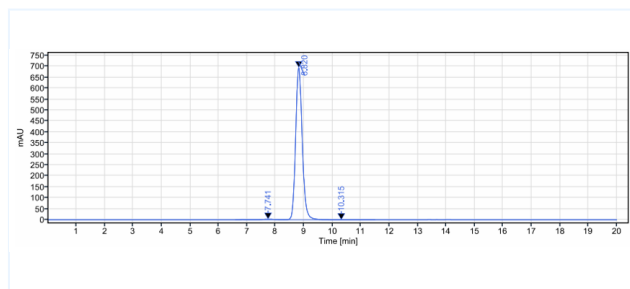
## Data

## Purity: SDS-PAGE



Anti-SOST / Sclerostin Reference Antibody (bloszumab) on SDS-PAGE under reducing (R) condition. The purity of the protein is greater than 95%.

## Purity: SEC-HPLC



The purity of Anti-SOST / Sclerostin Reference Antibody (bloszumab) is 98.7%, determined by SEC-HPLC.

The products are for research use only. Not for use in diagnostic procedures.