



CERTIFICATE OF ANALYSIS

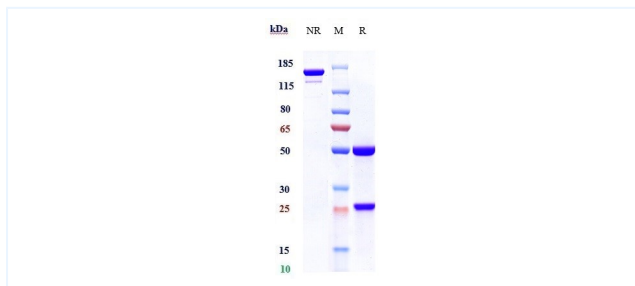


Product Details

Product name:	Anti-B7-H1 / PD-L1 / CD274 Reference Antibody (sugemalimab)	Lot.No.:	P56241
Target:	B7-H1 / PD-L1 / CD274	Catalog:	CHA620
Target Accession:	Q9NZQ7	Concentration :	1 mg/mL
Clonality:	Monoclonal	Isotype:	IgG4P
Reactivity:	Human	Molecular Weight (kDa) :	145 kDa
Application:	Kinetics (SPR), ELISA, Bioactivity: FACS, Functional assay, Research in vivo	Endotoxin:	<1 EU/mg
Formulation:	Liquid: 100mM Pro-Ac, 20mM Arg pH 5.0 Lyophilization: 25mM histidine, 8% sucrose, 0.01% Tween80 pH6.2	Conjugation:	Unconjugated
Reconstitution:	For Powder, reconstitute with sterile, distilled water to a final concentration of 1 mg/ml. Gently shake to solubilize completely. Do not vortex.	Expression System:	CHO
Storage:	-80°C for 2 years under sterile conditions; -20°C for 1 year under sterile conditions; Avoid repeated freeze-thaw cycles.	Purification:	Protein A

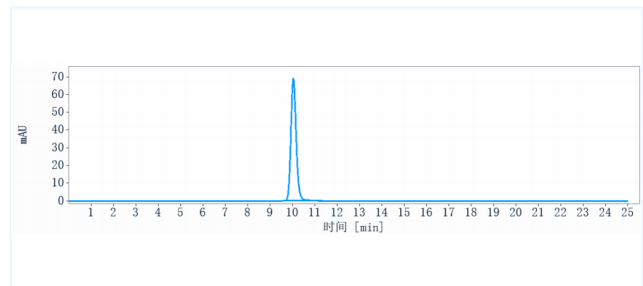
Data

Purity: SDS-PAGE



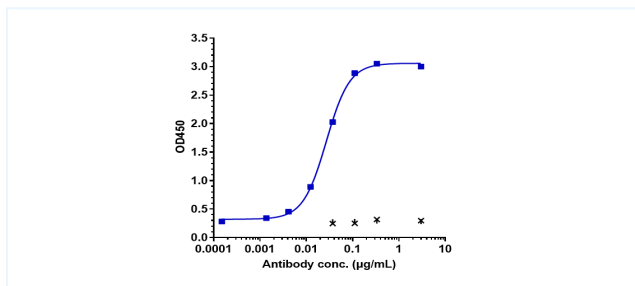
Anti-B7-H1 / PD-L1 / CD274 Reference Antibody (sugemalimab) on SDS-PAGE under reducing (R) condition. The purity of the protein is greater than 90%.

Purity: SEC-HPLC



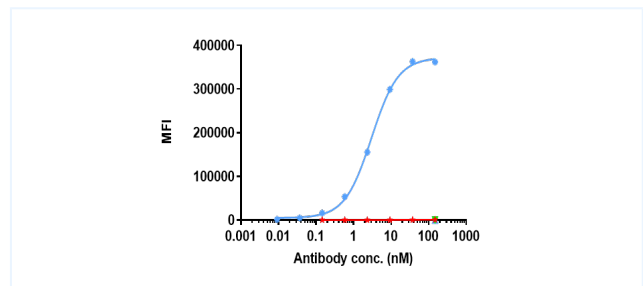
The purity of Anti-B7-H1 / PD-L1 / CD274 Reference Antibody (sugemalimab) is more than 95%, determined by SEC-HPLC.

Bioactivity: ELISA



Immobilized human PD-L1 His at 2 µg/mL can bind Anti-B7-H1 / PD-L1 / CD274 Reference Antibody (sugemalimab), EC50=0.02704 µg/mL.

Bioactivity: FACS



Human B7-H1 / PD-L1 / CD274 CHO-K Cell Line were stained with Anti-B7-H1 / PD-L1 / CD274 Reference Antibody (sugemalimab) and negative control protein respectively, washed and then followed by PE and analyzed with FACS, The EC50 is 3.03 nM.

The products are for research use only. Not for use in diagnostic procedures.