



# CERTIFICATE OF ANALYSIS

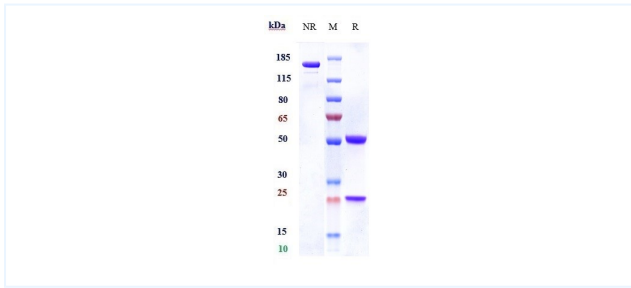


## Product Details

Product name:	Anti-CSF2Rb / CD131 Reference Antibody (CSL311)	Lot.No.:	P92744
Target:	CSF2Rb / CD131	Catalog:	CHA404
Target Accession:	P32927	Concentration :	1 mg/mL
Clonality:	Monoclonal	Isotype:	IgG4SP
Reactivity:	Human	Molecular Weight (kDa) :	144.66 kDa
Application:	Kinetics (SPR), ELISA, Bioactivity: FACS, Functional assay, Research in vivo	Endotoxin:	<1 EU/mg
Formulation:	Liquid: 100mM Pro-Ac, 20mM Arg pH 5.0   Lyophilization: 25mM histidine, 8% sucrose, 0.01% Tween80 pH6.2	Conjugation:	Unconjugated
Reconstitution:	For Powder, reconstitute with sterile, distilled water to a final concentration of 1 mg/ml. Gently shake to solubilize completely. Do not vortex.	Expression System:	CHO
Storage:	-80°C for 2 years under sterile conditions; -20°C for 1 year under sterile conditions; Avoid repeated freeze-thaw cycles.	Purification:	Protein A

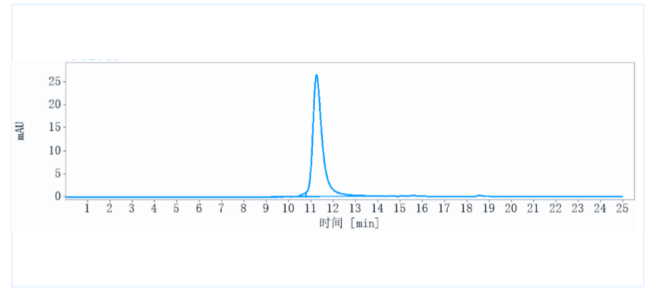
## Data

## Purity: SDS-PAGE



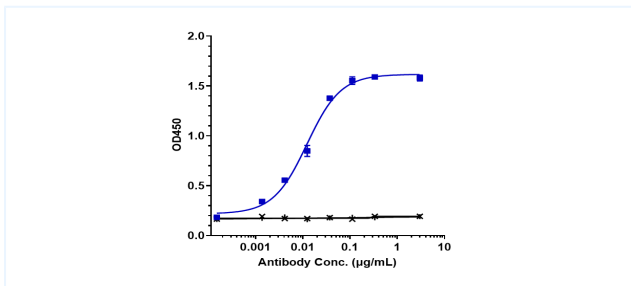
Anti-CSF2Rb / CD131 Reference Antibody (CSL311) on SDS-PAGE under reducing (R) condition. The purity of the protein is greater than 95%.

## Purity: SEC-HPLC



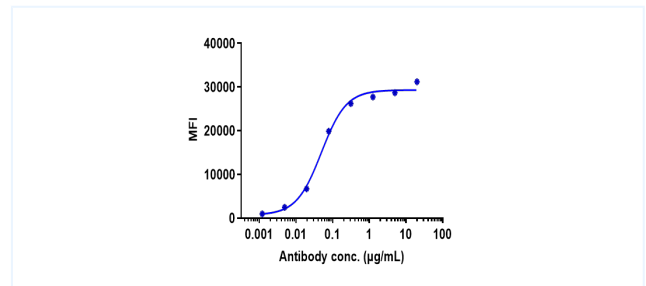
The purity of Anti-CSF2Rb / CD131 Reference Antibody (CSL311) is 98.34%, determined by SEC-HPLC.

## Bioactivity: ELISA



Immobilized human CSF2RB His at 2 µg/mL can bind Anti-CSF2Rb / CD131 Reference Antibody (CSL311), EC50=0.0122 µg/mL.

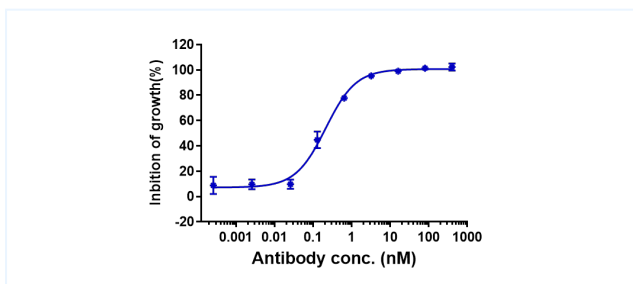
## Bioactivity: FACS



Human CSF2RB HEK293 cells were stained with Anti-CSF2Rb / CD131 Reference Antibody (CSL311) and negative control protein respectively, washed and then followed by PE and analyzed with FACS, EC50=0.049 µg/mL.

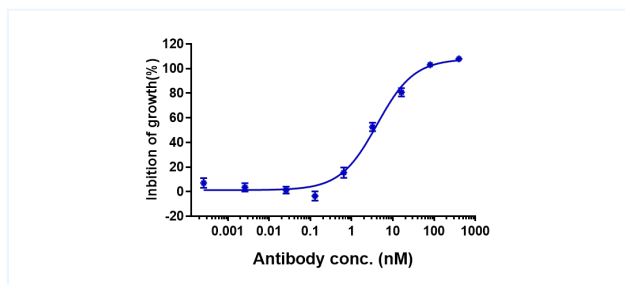
The products are for research use only. Not for use in diagnostic procedures.

## Function: Proliferation



IL-3-mediated proliferation of TF-1 can be completely blocked by antibodies with an IC50 of 0.2109 nM.

## Function: Proliferation



GM-CSF-mediated proliferation of TF-1 can be completely blocked by antibodies with an IC50 of 4.105 nM.

The products are for research use only. Not for use in diagnostic procedures.