



# CERTIFICATE OF ANALYSIS

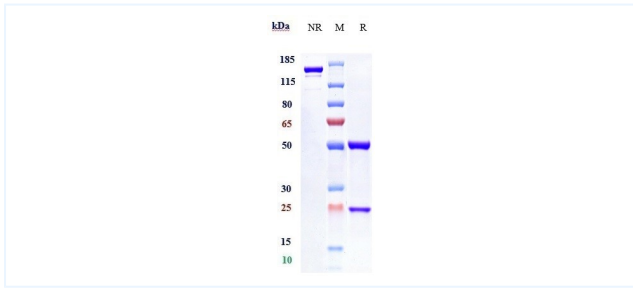


## Product Details

|                      |   |                             |              |
|----------------------|---|-----------------------------|--------------|
| Product name:        | Anti-IFNAR1 Reference Antibody (anifrolumab)  | Lot.No.:                    | P211720      |
| Target:              | IFNAR1  | Catalog:                    | CHA383       |
| Target<br>Accession: | P17181  | Concentration :             | 1 mg/mL      |
| Clonality:           | Monoclonal  | Isotype:                    | IgG1         |
| Reactivity:          | Human, Cynomolgus   | Molecular Weight<br>(kDa) : | 144.92 kDa   |
| Application:         | Kinetics (SPR), ELISA, Bioactivity: FACS, Functional assay,<br>Research in vivo   | Endotoxin:                  | <1 EU/mg     |
| Formulation:         | Liquid: 100mM Pro-Ac, 20mM Arg pH 5.0 <br/><br>Lyophilization: 25mM histidine, 8% sucrose, 0.01% Tween80<br>pH6.2                                       | Conjugation:                | Unconjugated |
| Reconstitution:      | For Powder, reconstitute with sterile, distilled water to a<br>final concentration of 1 mg/ml. Gently shake to solubilize<br>completely. Do not vortex. | Expression System:          | CHO          |
| Storage:             | -80°C for 2 years under sterile conditions; -20°C for 1 year<br>under sterile conditions; Avoid repeated freeze-thaw cycles.                            | Purification:               | Protein A    |

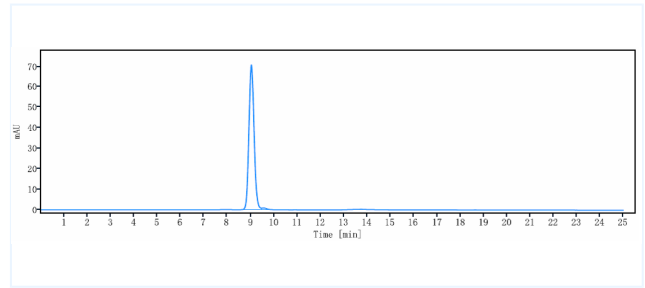
## Data

## Purity: SDS-PAGE



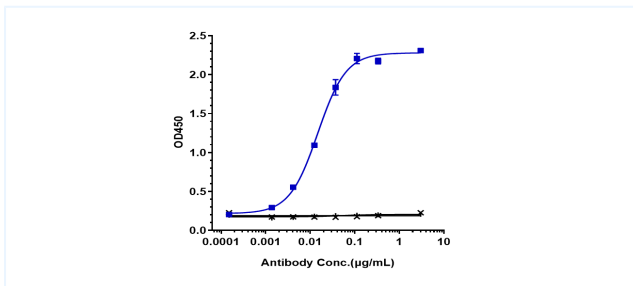
Anti-IFNAR1 Reference Antibody (anifrolumab) on SDS-PAGE under reducing (R) condition. The purity of the protein is greater than 95%.

## Purity: SEC-HPLC



The purity of Anti-IFNAR1 Reference Antibody (anifrolumab) is 98.75%, determined by SEC-HPLC.

## Bioactivity: ELISA



Immobilized human IFNAR1, Fc at 2 µg/mL can bind Anti-IFNAR1 Reference Antibody (anifrolumab), EC<sub>50</sub>=0.0147 µg/mL.

The products are for research use only. Not for use in diagnostic procedures.