



# CERTIFICATE OF ANALYSIS

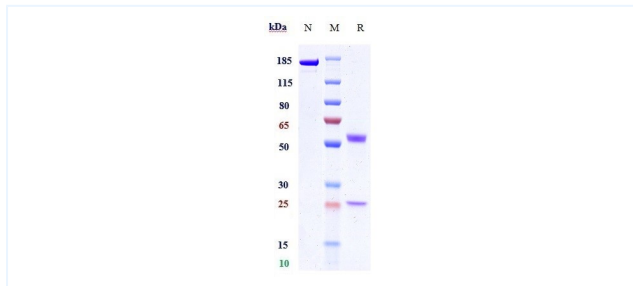


## Product Details

|                   |   |                          |              |
|-------------------|---|--------------------------|--------------|
| Product name:     | Anti-SIRPa / CD172a Reference Antibody (Hospital for Sick Children patent anti-SIRPA)   | Lot.No.:                 | P71507       |
| Target:           | SIRPa / CD172a  | Catalog:                 | CHA337       |
| Target Accession: | P78324  | Concentration :          | 1 mg/mL      |
| Clonality:        | Monoclonal  | Isotype:                 | IgG4SP       |
| Reactivity:       | Human   | Molecular Weight (kDa) : | 145 kDa      |
| Application:      | Kinetics (SPR), ELISA, Bioactivity: FACS, Functional assay, Research in vivo  | Endotoxin:               | <1 EU/mg     |
| Formulation:      | Liquid: 100mM Pro-Ac, 20mM Arg pH 5.0<br>Lyophilization: 25mM histidine, 8% sucrose, 0.01% Tween80 pH6.2  | Conjugation:             | Unconjugated |
| Reconstitution:   | For Powder, reconstitute with sterile, distilled water to a final concentration of 1 mg/ml. Gently shake to solubilize completely. Do not vortex. | Expression System:       | CHO          |
| Storage:          | -80°C for 2 years under sterile conditions; -20°C for 1 year under sterile conditions; Avoid repeated freeze-thaw cycles.                         | Purification:            | Protein A    |

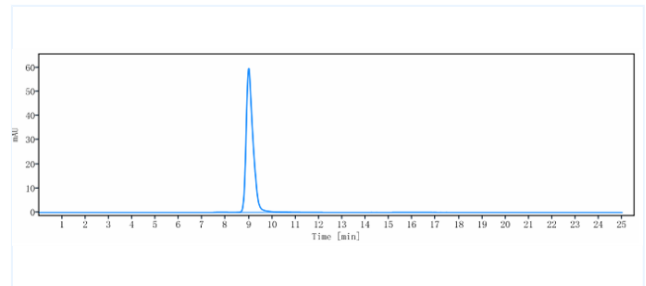
# Data

## Purity: SDS-PAGE



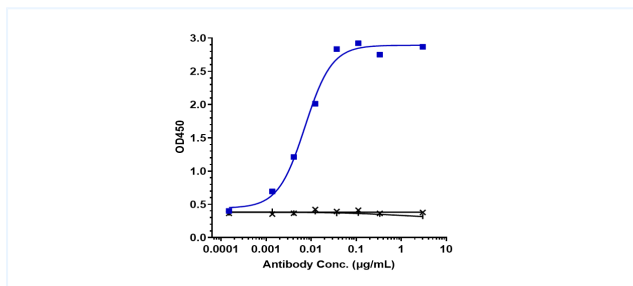
Anti-SIRPa / CD172a Reference Antibody (Hospital for Sick Children patent anti-SIRPA) on SDS-PAGE under reducing (R) condition. The purity of the protein is greater than 95%.

## Purity: SEC-HPLC



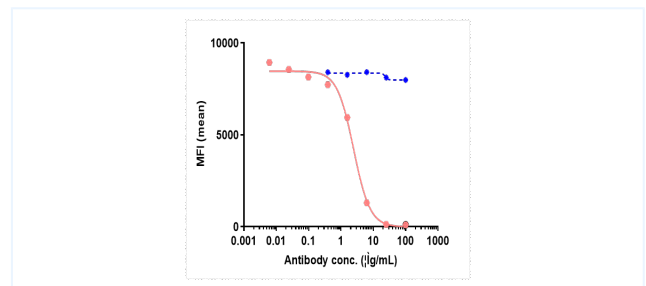
The purity of Anti-SIRPa / CD172a Reference Antibody (Hospital for Sick Children patent anti-SIRPA) is more than 95%, determined by SEC-HPLC.

## Bioactivity: ELISA



Immobilized human SIRPα V1 FC at 4 µg/mL can bind Hospital for Sick Children patent anti-SIRPA, EC50=0.007292 µg/mL.

## Function: Blocking



Hospital for Sick Children patent anti-SIRPA FACS Blocking was evaluated using human CCRF-CEM cells. The IC50 was approximately 3.289 µg/ml.

nM.

The products are for research use only. Not for use in diagnostic procedures.