



CERTIFICATE OF ANALYSIS

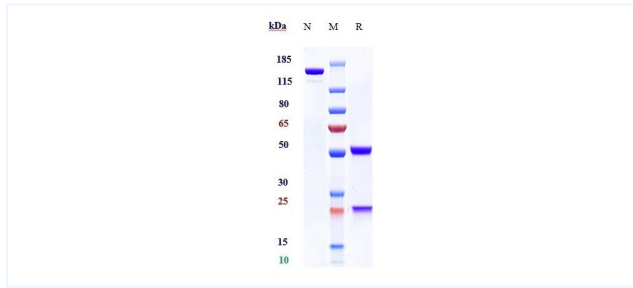


Product Details

Product name:	Anti-SEMA4D / CD100 Reference Antibody (pepinemab)	Lot.No.:	P85017
Target:	SEMA4D / CD100	Catalog:	CHA336
Target Accession:	Q92854	Concentration :	1 mg/mL
Clonality:	Monoclonal	Isotype:	Human IgG4
Reactivity:	Human/Mouse CD100	Molecular Weight (kDa) :	150 kDa
Application:	FCM, Block, In Vivo, ELISA	Endotoxin:	<1 EU/mg
Formulation:	Liquid: 100mM Pro-Ac, 20mM Arg pH 5.0 Lyophilization: 25mM histidine, 8% sucrose, 0.01% Tween80 pH6.2	Conjugation:	Unconjugated
Reconstitution:	For Powder, reconstitute with sterile, distilled water to a final concentration of 1 mg/ml. Gently shake to solubilize completely. Do not vortex.	Expression System:	CHO
Storage:	Upon receipt, store immediately at -20°C or lower for 24 months. Store aliquots at -80°C for up to 3 months. Avoid repeated freeze-thaw cycles.	Purification:	Protein A

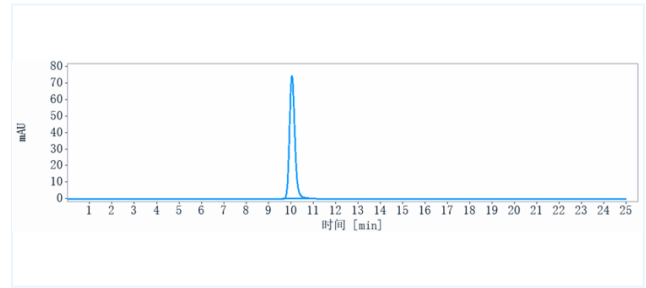
Data

Purity: SDS-PAGE



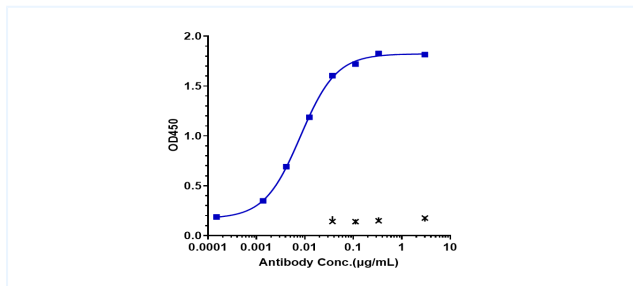
Anti - Human/Mouse CD100 (Pepinemab) on SDS-PAGE under reducing (R) condition. The purity of the protein is greater than 95%.

Purity: SEC-HPLC



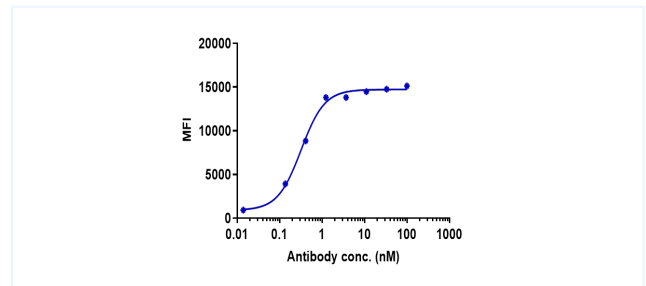
The purity of Anti - Human/Mouse CD100 (Pepinemab) is 100%, determined by SEC-HPLC.

Bioactivity: ELISA



Immobilized human CD100 (His Tag, 2µg/mL) can bind to Anti - Human/Mouse CD100 (Pepinemab) with an EC50 of 0.0081 ug/mL.

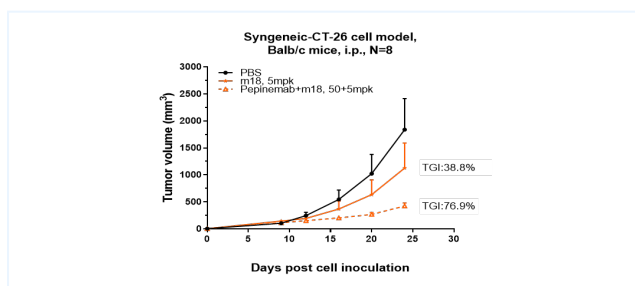
Bioactivity: FACS



Human CD100-expressing HEK293 cells were stained with Anti - Human/Mouse CD100 (Pepinemab) , with isotype and secondary-only controls. Flow analysis showed specific binding of the antibody, with an EC50 of 0.3227 nM.

The products are for research use only. Not for use in diagnostic procedures.

Research in vivo



Anti - Human/Mouse CD100 (Pepinemab) inhibited the tumor growth of CT26 on balb/c mice. The result showed significant anti-tumor effects, with an tumor inhibition rate (TGI) of 76.9% at 50 mpk at D24.

The products are for research use only. Not for use in diagnostic procedures.