



# CERTIFICATE OF ANALYSIS

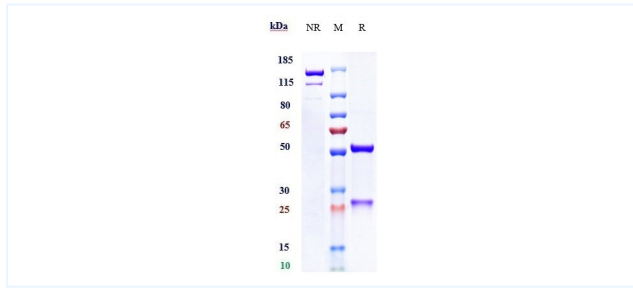


## Product Details

Product name:	Anti-Mesothelin Reference Antibody (anetumab)	Lot.No.:	P93924
Target:	Mesothelin	Catalog:	CHA299
Target Accession:	Q13421	Concentration :	1 mg/mL
Clonality:	Monoclonal	Isotype:	IgG1
Reactivity:	Human	Molecular Weight (kDa) :	143.8 kDa
Application:	Kinetics (SPR), ELISA, Bioactivity: FACS, Functional assay, Research in vivo	Endotoxin:	<1 EU/mg
Formulation:	Liquid: 100mM Pro-Ac, 20mM Arg pH 5.0   Lyophilization: 25mM histidine, 8% sucrose, 0.01% Tween80 pH6.2	Conjugation:	Unconjugated
Reconstitution:	For Powder, reconstitute with sterile, distilled water to a final concentration of 1 mg/ml. Gently shake to solubilize completely. Do not vortex.	Expression System:	CHO
Storage:	-80°C for 2 years under sterile conditions; -20°C for 1 year under sterile conditions; Avoid repeated freeze-thaw cycles.	Purification:	Protein A

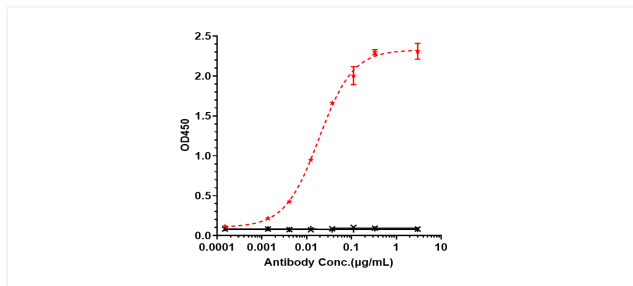
## Data

## Purity: SDS-PAGE



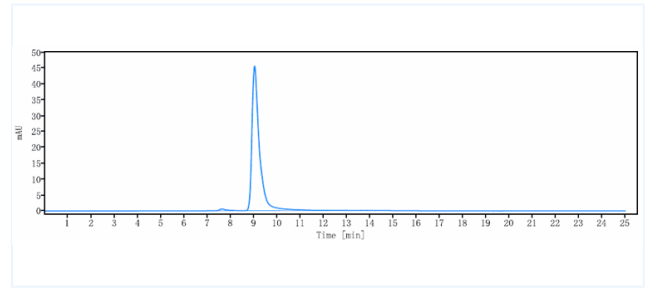
Anti-Mesothelin Reference Antibody (anetumab) on SDS-PAGE under reducing (R) condition. The purity of the protein is greater than 95%.

## Bioactivity: ELISA



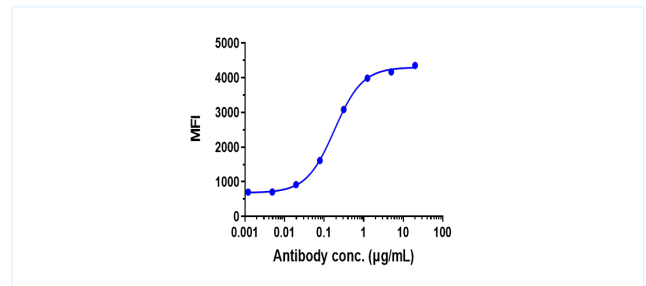
Immobilized human Mesothelin His at 2 µg/mL can bind Anti-Mesothelin Reference Antibody (anetumab), EC50=0.01877 µg/mL.

## Purity: SEC-HPLC



The purity of Anti-Mesothelin Reference Antibody (anetumab) is 98.58%, determined by SEC-HPLC.

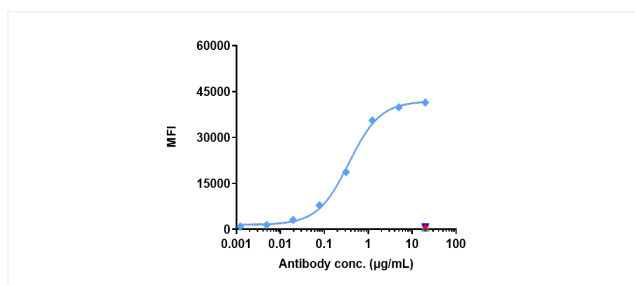
## Bioactivity: FACS



ASPC-1 cells were stained with Anti-Mesothelin Reference Antibody (anetumab) and negative control protein respectively, washed and then followed by PE and analyzed with FACS, EC50=0.1822 µg/mL.

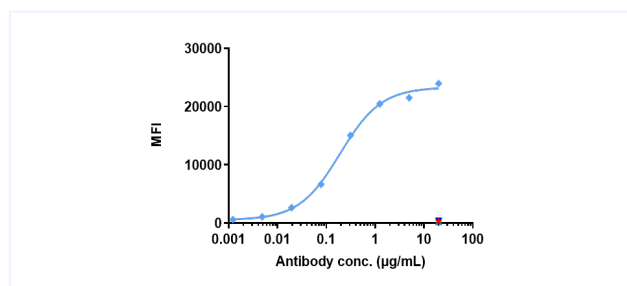
The products are for research use only. Not for use in diagnostic procedures.

## Bioactivity: FACS



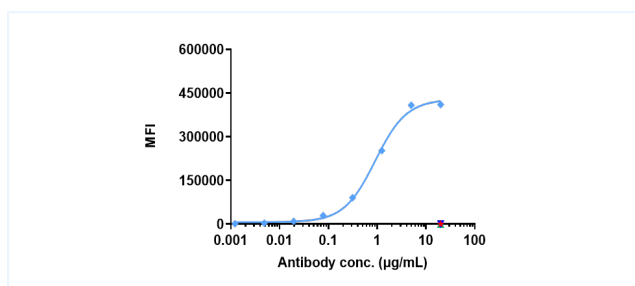
OVCAR-3 cells were stained with Anti-Mesothelin Reference Antibody (anetumab) and negative control protein respectively, washed and then followed by PE and analyzed with FACS, The EC50 is 0.365 µg/mL.

## Bioactivity: FACS



NCI-N87 cells were stained with Anti-Mesothelin Reference Antibody (anetumab) and negative control protein respectively, washed and then followed by PE and analyzed with FACS, The EC50 is 0.192 µg/mL.

## Bioactivity: FACS



Human Mesothelin CHO-K Cell Line were stained with Anti-Mesothelin Reference Antibody (anetumab) and negative control protein respectively, washed and then followed by PE and analyzed with FACS, The EC50 is 0.915 µg/mL.

The products are for research use only. Not for use in diagnostic procedures.