



# CERTIFICATE OF ANALYSIS



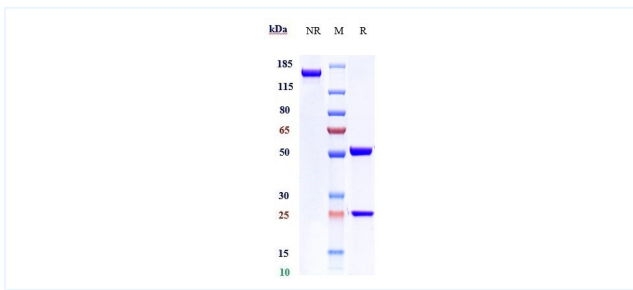
## Product Details

Product name:	Anti-MADCAM1 Reference Antibody (ontamalimab)	Lot.No.:	P88483
Target:	MADCAM1	Catalog:	CHA292
Target Accession:	Q13477	Concentration :	1 mg/mL
Clonality:	Monoclonal	Isotype:	IgG2SA
Reactivity:	Human	Molecular Weight (kDa) :	146.86 kDa
Application:	Kinetics (SPR), ELISA, Bioactivity: FACS, Functional assay, Research in vivo	Endotoxin:	<0.001 EU/μg
Formulation:	Liquid: 100mM Pro-Ac, 20mM Arg pH 5.0 Lyophilization: 25mM histidine, 8% sucrose, 0.01% Tween80 pH6.2	Conjugation:	Unconjugated
Reconstitution:	For Powder, reconstitute with sterile, distilled water to a final concentration of 1 mg/ml. Gently shake to solubilize completely. Do not vortex.	Expression System:	CHO
Storage:	-80°C for 2 years under sterile conditions; -20°C for 1 year under sterile conditions; Avoid repeated freeze-thaw cycles.	Purification:	Protein A

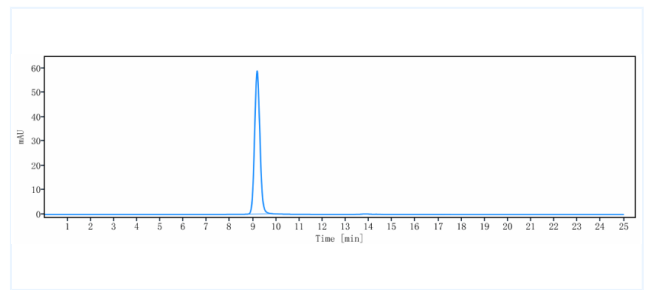
## Data

Purity: SDS-PAGE

Purity: SEC-HPLC

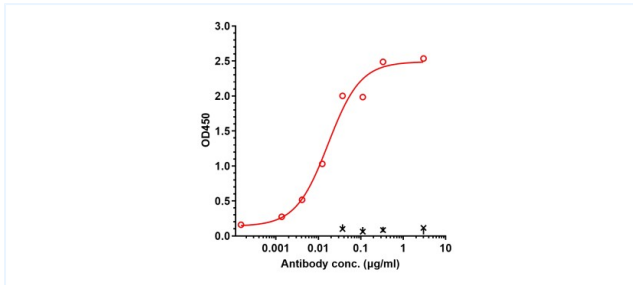


Anti-MADCAM1 Reference Antibody (ontamalimab) on SDS-PAGE under reducing (R) condition. The purity of the protein is greater than 95%.



The purity of Anti-MADCAM1 Reference Antibody (ontamalimab) is 100%, determined by SEC-HPLC.

### Bioactivity: ELISA



Immobilized Human MADCAM1, Fc tag at 2 µg/mL can bind

Ontamalimab, EC50=0.01696 µg/mL.

The products are for research use only. Not for use in diagnostic procedures.