



# CERTIFICATE OF ANALYSIS



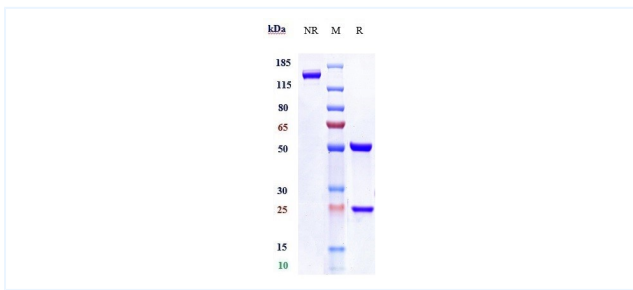
## Product Details

Product name:	Anti-LAG3 / CD223 Reference Antibody (relatlimab)	Lot.No.:	P200344
Target:	LAG3 / CD223	Catalog:	CHA285
Target Accession:	P18627	Concentration :	1 mg/mL
Clonality:	Monoclonal	Isotype:	IgG4SP
Reactivity:	Human / Cynomolgus	Molecular Weight (kDa) :	145.58 kDa
Application:	FCM, Block, In Vivo, ELISA	Endotoxin:	<1 EU/mg
Formulation:	Liquid: 100mM Pro-Ac, 20mM Arg pH 5.0   Lyophilization: 25mM histidine, 8% sucrose, 0.01% Tween80 pH6.2	Conjugation:	Unconjugated
Reconstitution:	For Powder, reconstitute with sterile, distilled water to a final concentration of 1 mg/ml. Gently shake to solubilize completely. Do not vortex.	Expression System:	CHO
Storage:	-80°C for 2 years under sterile conditions; -20°C for 1 year under sterile conditions; Avoid repeated freeze-thaw cycles.	Purification:	Protein A

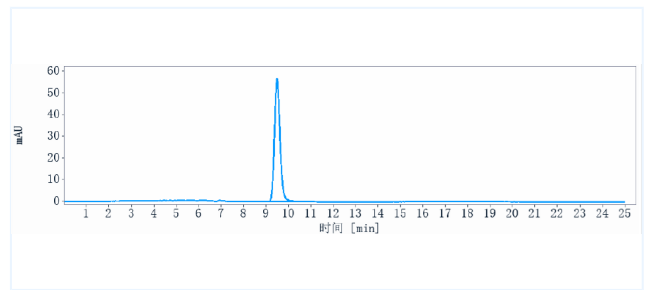
## Data

Purity: SDS-PAGE

Purity: SEC-HPLC

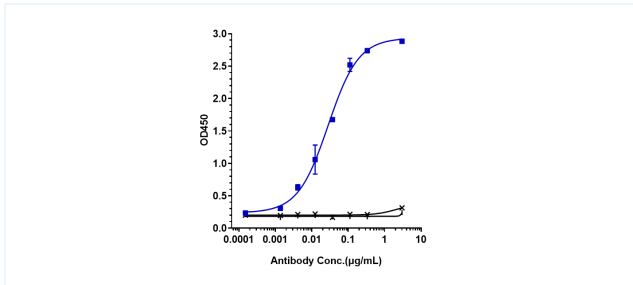


Anti- Human LAG3 ( Relatlimab) on SDS-PAGE under reducing (R) condition. The purity of the protein is greater than 95%.



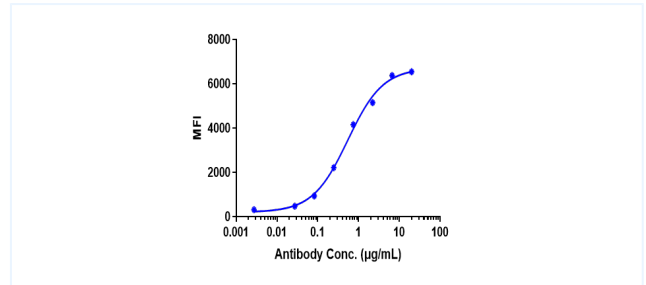
The purity of Anti- Human LAG3 ( Relatlimab) is 100%, determined by SEC-HPLC.

#### Bioactivity: ELISA



Immobilized human LAG3 (His Tag, 2µg/mL) can bind to Anti- Human LAG3 ( Relatlimab) with an EC50 of 0.02812 ug/mL.

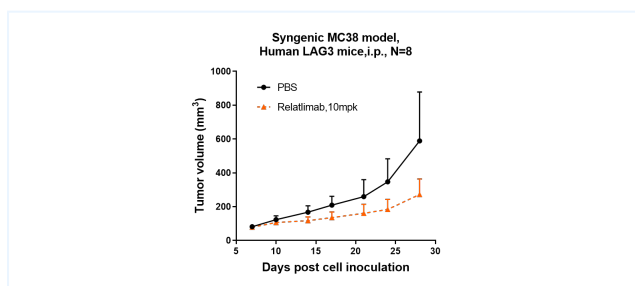
#### Bioactivity: FACS



Human LAG3-expressing CHO cells were stained with Anti- Human LAG3 ( Relatlimab) , with isotype and secondary-only controls. Flow analysis showed specific binding of the antibody, with an EC50 of 0.5464 ug/mL.

The products are for research use only. Not for use in diagnostic procedures.

## Research in vivo



Anti- Human LAG3 ( Relatlimab ) inhibited the tumor growth of MC38 on Human LAG3 mice. The result showed significant anti-tumor effects, with an tumor inhibition rate (TGI) of 53.8% at 10 mpk at D28.

The products are for research use only. Not for use in diagnostic procedures.